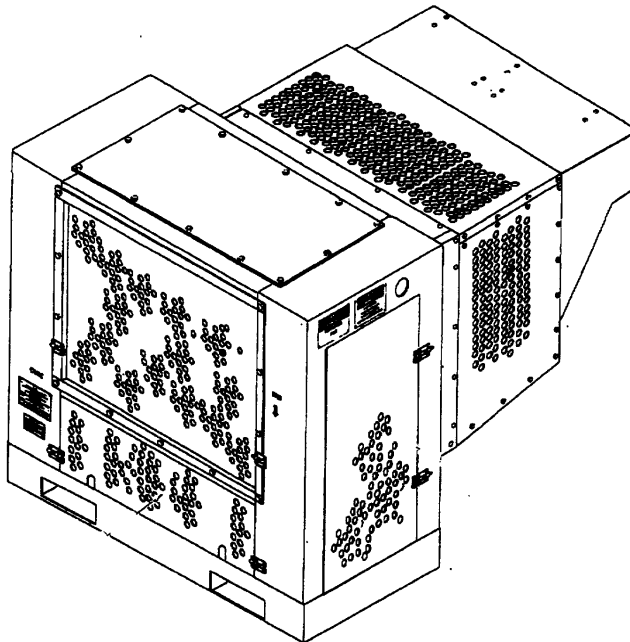


TECHNICAL MANUAL

UNIT AND DIRECT SUPPORT MAINTENANCE  
REPAIR PARTS AND SPECIAL TOOLS LIST

REFRIGERATION UNIT, MECHANICAL  
9K BTU, ELECTRIC  
MODEL F9000RE

NSN 4110-01-394-6473



DISTRIBUTION STATEMENT A – Approved for public release; distribution is unlimited.

---

HEADQUARTERS, DEPARTMENT OF THE ARMY

31 AUGUST 2001

THIS PAGE INTENTIONALLY LEFT BLANK

**TM 9-4110-258-23P**

INSERT LATEST UPDATED PAGES / WORK PACKAGES DESTROY SUPERSEDED DATA

**LIST OF EFFECTIVE PAGES**

Note: The portion of text affected by the update is indicated by a vertical line in the outer margins of the page. Updates to illustrations are indicated by miniature pointing hands. Updates to wiring diagrams are indicated by shaded areas.

Dates of issue for original and updated pages / work packages are:

Original .. 0 .. 31 Aug 01

Revision

**TOTAL NUMBER OF PAGES FOR FRONT AND REAR MATTER IS 12 AND TOTAL NUMBER OF WORK PACKAGES IS 19 CONSISTING OF THE FOLLOWING:**

Page / WP No.	*Revision No.	Page / WP No.	*Revision No.
Front Cover	0		
A-B	0		
i-v	0		
WP 0001-0019	0		
Authentication Page	0		
Sample DA Form 2028	0		
Blank DA Form 2028	0		
Back Cover	0		

\*Zero in this column indicates an original page or work package

THIS PAGE INTENTIONALLY LEFT BLANK

TM 9-4110-258-23P

TECHNICAL MANUAL

UNIT, AND DIRECT SUPPORT MAINTENANCE  
REPAIR PARTS AND SPECIAL TOOLS LIST

REFRIGERATION UNIT, MECHANICAL  
9K BTU, ELECTRIC  
MODEL F9000RE

NSN 4110-01-394-6473

You can help improve this manual. If you find any mistakes or if you know of a way to improve the procedures, please let us know. Mail your letter together with DA Form 2028 (Recommended Changes to Publications and Blank Forms), located in the back of this manual, directly to: Commander, U.S. Army Soldier and Biological Chemical Command, ATTN: AMSSB-RIM-E (N), Kansas Street, Natick, MA 01760-5052. You may also send in your recommended changes via electronic mail directly to amssb-rim-e@natick.army.mil. A reply will be furnished to you. Instructions for sending an electronic 2028 may be found at the back of this manual immediately preceding the hard copy 2028.

DISTRIBUTION STATEMENT A – Approved for public release. Distribution is unlimited.

TABLE OF CONTENTS

LIST OF EFFECTIVE PAGES	WP Sequence No.
	A
<hr/>	
<b>INTRODUCTION</b>	
.....	0001 00
GROUP 01 Panels and Guards.....	0002 00
GROUP 02 Electrical and Control System .....	
Control Box Assembly .....	0003 00
Control Box Wires and Cables .....	0004 00
Control Box .....	0005 00
Doors, Switches, and Electrical (Power) Cord Connector .....	0006 00
GROUP 03 Power Transmission/Air Handling .....	0007 00

HEADQUARTERS, DEPARTMENT OF THE ARMY

31 AUGUST 2001

**TABLE OF CONTENTS - Continued**

**WP Sequence No.**

GROUP 04	Refrigeration System .....	
	Refrigeration Piping, Condenser Section .....	0008 00
	Pressure Switches .....	0009 00
	Temperature and Refrigeration Gauges.....	0010 00
	Evaporator Assembly.....	0011 00
	Compressor .....	0012 00
GROUP 05	Enclosure .....	
	Heat Shield Frame .....	0013 00
	Heat Shield Gaskets.....	0014 00
	Condenser Enclosure .....	0015 00
<hr/>		
GROUP 06	Bulk Materials .....	0016 00
	Special Tools List .....	0017 00
	National stock number index .....	0018 00
	Part number index .....	0019 00

**REFRIGERATION UNIT, MECHANICAL, 9K BTU, ELECTRIC  
REPAIR PARTS AND SPECIAL TOOLS LIST (RPSTL) INTRODUCTION**

**SCOPE**

This Repair Parts and Special Tools List (RPSTL) lists and authorizes spare and repair parts; special tools; special tests, measurement and diagnostic equipment (TMDE); and other special support equipment required for performance of unit and direct support maintenance of the refrigeration unit. It authorizes the requisitioning, issue, and disposition of spares, repair parts, and special tools as indicated by the source, maintenance, and recoverability (SMR) codes.

**GENERAL**

In addition to this section, this RPSTL is divided into the following additional sections:

**Repair Parts Sections.** These sections contain lists of spares and repair parts authorized by this RPSTL for use in the performance of maintenance. These sections also include parts that must be removed for replacement of the authorized parts. Parts lists are composed of functional groups in ascending alphanumeric sequence, with the parts in each group listed in ascending figure and item number sequence. Hardware is listed with the components used. Bulk materials are listed by item name in FIG. BULK at the end of the sections. Repair parts kits are listed separately in their own functional group and section. Repair parts for repairable special tools are also listed in a separate section. Items listed are shown on the associated illustrations.

**Special Tools List Sections.** Sections containing lists of special tools, special TMDE, and special support equipment authorized by this RPSTL (as indicated by Basis of Issue (BOI) information in the DESCRIPTION AND USABLE ON CODE (UOC) column). Tools that are components of common tool sets and/or Class VII are not listed.

**Cross-Reference Index Sections.** There are two cross-reference indexes in this RPSTL; the National Stock Number (NSN) Index, and the Part Number Index. The NSN index refers you to the figure and the item number. The part number index also refers you to the figure and item number.

**EXPLANATION OF COLUMNS IN THE RPSTL**

**ITEM NO. (Column (1)).** Indicates the number used to identify items called out in the illustration.

**SMR Code (Column (2)).** The Source, maintenance, and recoverability (SMR) code is a 5-position code containing supply / requisitioning information, maintenance category authorization criteria and disposition instruction, as shown in the following breakout.

Source Code	Maintenance Code		Recoverability Code
<b>X X</b>	<b>X</b>	<b>X</b>	<b>X</b>
1st two positions:	3rd Position:	4th Position:	5th Position:
How you get an item	Who can install replace or use the item	Who can do complete repair* on the item	Who determines disposition action on an item

\*Complete Repair: Maintenance capacity, capability, and authority to perform all corrective maintenance tasks of the "Repair" function in a use/user environment in order to restore serviceability to a failed item.

**Source Code.** The source code, tells you how to get an item needed for maintenance, repair, or overhaul of an end item/equipment. Explanation of source codes follows.

<b>Source Code</b>	<b>Explanation</b>
PA	Stock items; use the applicable NSN to request/requisition items with these source codes. They are authorized to the category indicated by the code entered in the third position of the SMR code.
PB	
PC**	
PD	
PE	
PF**	
PG	NOTE: Items coded PC are subject to deterioration.
KB	Items with these codes are not to be requested/requisitioned individually. They are part of a kit which is authorized to the maintenance category indicated in the 3rd position of the SMR code. The complete kit must be requisitioned and applied.
KD	
KF	
MO - Made at unit/AVUM Level	Items with these codes are not to be requested/requisitioned individually. They must be made from bulk material that is identified by the part number in the DESCRIPTION AND USABLE ON CODE (UOC) column and listed in the Bulk Material group of the repair parts list in this RPSTL. If the item is authorized to you by the 3rd position code of the SMR code, but the source code indicates it is made at a higher level, order the item from the higher level of maintenance.
MF- Made at DS/AVIM Level	
MH - Made at GS Level)	
ML - Made at Specialized Repair Act. (SRA)	
MD - Made at Depot	
AO - Assembled by Unit/AVUM Level	Items with these codes are not to be requested/requisitioned individually. The parts that make up the assembled item must be requisitioned or fabricated and assembled at the level of maintenance indicated by the source code. If the third position code of the SMR code authorizes you to replace the item, but the source code indicates the item is assembled at a higher level, order the item from the higher level of maintenance.
AF - Assembled by DS/AVIM Level	
AH - Assembled by GS level	
AL - Assembled by SRA order the item from the higher level of maintenance.	
AD - Assembled by Depot	
XA	Do not requisition an "XA" coded item. Order its next higher assembly. (Also, refer to the NOTE below.)
XB	If an "XB" item is not available from salvage, order it using the CAGEC and part number given.
XC	Installation drawing, diagram, instruction sheet, field service drawing, that is identified by manufacturer's part number.
XD	Item is not stocked. Order an "XD" coded item through normal supply channels using the Commercial and Government Entity Code (CAGEC) and part number given, if no NSN is available.



**NOTE**

Cannibalization or controlled exchange, when authorized, may be used as a source of supply for items with the above source codes, except for those source coded "XA" or those aircraft support items restricted by requirements of AR 750-1.

**Maintenance Code.** Maintenance codes tell you the level(s) of maintenance authorized to use and repair support items. The maintenance codes are entered in the third and fourth positions of the SMR Code as follows:

**Third Position.** The maintenance code entered in the third position tells you the lowest maintenance level authorized to remove, replace, and use the support item. The maintenance code entered in the third position will indicate authorization to one of the following levels of maintenance.

<b>Maintenance Code</b>	<b>Application/Explanation</b>
C	Crew or operator maintenance done within unit/AVUM maintenance.
O	Unit level/AVUM maintenance can remove, replace, and use the item.
F	Direct support/AVIM maintenance can remove, replace, and use the item.
H	General support maintenance can remove, replace, and use the item.
L	Specialized repair activity can remove, replace, and use the item.
D	Depot level can remove, replace, and use the item.

**Fourth Position.** The maintenance code entered in the fourth position tells whether or not the item is to be repaired and identifies the lowest maintenance level with the capability to do complete repair (i.e., perform all authorized repair functions).

**NOTE**

Some limited repair may be done on the item at a lower level of maintenance, if authorized by the Maintenance Allocation Chart (MAC) and SMR codes.

<b>Maintenance Code</b>	<b>Application/Explanation</b>
O	Unit/AVUM is the lowest level that can do complete repair of the item.
F	Direct support/AVIM is the lowest level that can do complete repair of the item.
H	General support is the lowest level that can do complete repair of the item.
L	Specialized repair activity (designate the specialized repair activity) is the lowest level that can do complete repair of the item.
D	Depot is the lowest level that can do complete repair of the item.
Z	Nonrepairable. No repair is authorized.
B	No repair is authorized. (No parts or special tools are authorized for the maintenance of a "B" coded item.) However, the item may be reconditioned by adjusting, lubricating, etc., at the user level.

**Recoverability Code.** Recoverability codes are assigned to items to indicate the disposition action on unserviceable items. The recoverability code is entered in the fifth position of the SMR Code as follows:

Code	Application/Explanation
Z	Nonrepairable item. When unserviceable, condemn and dispose of the item at the level of maintenance shown in 3rd position of SMR Code.
O	Repairable item. When uneconomically repairable, condemn and dispose of the item at organizational or aviation unit level.
F	Repairable item. When uneconomically repairable, condemn and dispose of the item at the direct support or aviation intermediate level.
H	Repairable item. When uneconomically repairable, condemn and dispose of the item at the general support level.
D	Repairable item. When beyond lower level repair capability, return to depot. Condemnation and disposal of item not authorized below depot level.
L	Repairable item. Condemnation and disposal not authorized below Specialized Repair Activity (SRA).
A	Item requires special handling or condemnation procedures because of specific reasons (e.g., precious metal content, high dollar value, critical material, or hazardous material). Refer to appropriate manuals/ directives for specific instructions.

**NATIONAL STOCK NUMBER (NSN) (Column (3)).** The NSN for the item is listed in this column.

**CAGEC (Column (4)).** The Commercial and Government Entity Code (CAGEC) is a 5-digit numeric code that is used to identify the manufacturer, distributor, or Government agency/activity that supplies the item.

**PART NUMBER (Column (5)).** Indicates the primary number used by the manufacture, (individual company, firm, corporation, or Government activity), which controls the design and characteristics of the item by means of its engineering drawings, specifications, standards, and inspection requirements to identify an item or range of items.

### NOTE

When an item with an assigned NSN is requisitioned, the part number for the item received may be different than the part number of the item being replaced.

**DESCRIPTION AND USABLE ON CODE (UOC) (Column (6)).** This column includes the following information:

The federal item name and, when required, a minimum description to identify the item.

Part numbers of bulk materials are referenced in this column in the line entry to be manufactured/fabricated.

Hardness Critical Item (HCI). A support item that provides the equipment with special protection from electromagnetic pulse (EMP) damage during a nuclear attack.

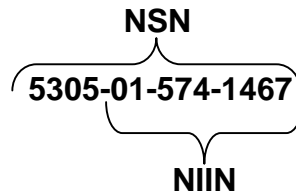
The statement "END of FIGURE" appears just below the last item description in Column (5) for a given figure in both the repair parts list and special tools list.

**QTY (Column (7)).** The QTY (quantity per figure) column indicates the quantity of the item used in the breakout shown on the illustration/figure, which is prepared for a functional group, subfunctional group, or an assembly. A "V" appearing in this column instead of quantity indicates that the quantity is a variable with each application.

## EXPLANATION OF CROSS REFERENCE INDEX FORMAT AND COLUMNS

### National Stock Number (NSN) Index

**STOCK NUMBER Column.** This column lists the NSN in national item identification number (NIIN) sequence. The NIIN consists of the last nine digits of the NSN, i.e.



When using this column to locate an item, ignore the first four digits of the NSN. Use the complete NSN (13 digits) when requisitioning by stock number.

**FIG. COLUMN.** This column lists the number of the figure where the item is identified/located. The figures are in numerical order in Section II and Section III.

**ITEM COLUMN.** The Item number identifies the item associated with the figure listed in the adjacent FIG. Column. This item is also identified by the NSN listed on the same line.

**PART NUMBER INDEX.** Part numbers in this index are listed by part number in ascending alphanumeric sequence (i.e. vertical arrangement of letter and number combination which place the first letter or digit of each group in order A through Z, followed by the numbers 0 through 9, and each following letter or digit in like order).

**CAGEC COLUMN.** The Commercial and Government Entity Code (CAGEC) is a 5-digit numeric code used to identify the manufacturer, distributor, or Government agency/activity that supplies the item.

**PART NUMBER COLUMN.** Indicates the primary number used by the manufacturer (individual, firm, corporation, or government activity), which controls the design and characteristics of the item by means of its engineering drawings, specifications, standards and inspection requirements to identify an item or range of items.

**STOCK NUMBER COLUMN.** This column lists the NSN for the associated part number and manufacturer identified in the PART NUMBER and CAGEC columns to the left.

**FIG. COLUMN.** This column lists the number of the figure where the item is identified/located in the repair parts list and special tools list.

**ITEM COLUMN.** The item number is that number assigned to the item as it appears in the figure referenced in adjacent figure number column.

**REFERENCE DESIGNATOR Column.** Indicates the reference designator assigned to the item.

**FIG. COLUMN.** This column lists the number of the figure where the item is identified/located in the repair parts list and special tools list.

**ITEM COLUMN.** The item number is that number assigned to the item as it appears in the figure referenced in the adjacent figure number column.

**STOCK NUMBER COLUMN.** This column lists the NSN for the item.

**CAGEC COLUMN.** The Commercial and Government Entity Code (CAGEC) is a 5-digit numeric code used to identify the manufacturer, distributor, or Government agency/activity that supplies the item.

**PART NUMBER COLUMN.** Indicates the primary number used by the manufacturer (individual, firm, corporation, or Government activity), which controls the design and characteristics of the item by means of its engineering drawings, specifications, standards, and inspection requirements to identify an item or range of items.

#### **SPECIAL INFORMATION.**

**USABLE ON CODE (UOC).** The useable on code appears in the lower left corner of the Description Column heading. Useable on codes are shown as "UOC" in the Description Column (justified left) on the first line under the applicable item description/nomenclature. Uncoded items are applicable to all models. Identification of the usable on codes used in this RPSTL are:

There are no Usable On Codes applicable to 9K BTU Refrigeration Unit.

**FABRICATION INSTRUCTIONS.** Bulk materials required to manufacture items are listed in the Bulk Material Functional Group of this RPSTL. Part numbers for bulk materials are also referenced in the description column of the line entry for the item to be manufactured/fabricated. Detailed fabrication instructions for items source coded to be manufactured or fabricated are found in TB 10-4500-200-13.

**INDEX NUMBER.** Items that have the word BULK in the figure column will have an index number shown in the item number column. This index number is a cross-reference between the National Stock Number/Part Number Index and the bulk material list in Section II.

**ASSOCIATED PUBLICATIONS.** TM 9-4110-258-13 is the Operator's, Unit and Direct Support Maintenance Manual for the Refrigeration Unit, Mechanical, 9K BTU, Electric.

---

**HOW TO LOCATE REPAIR PARTS.**

**When National Stock Numbers or Part Numbers are NOT known.** First, using the table of contents, determine the assembly or subassembly group to which the item belongs. This is necessary since figures are prepared for assembly groups and subassembly groups, and listings are divided into the same groups.

Second, find the figure covering the assembly group or subassembly group to which the item belongs.

Third, identify the item on the figure and note the number(s).

Fourth, look in the repair parts list for the figure and item numbers. The NSNs and part numbers are on the same line as the associated item numbers.

**When National Stock Number or Part Number IS known.** First, if you have the NSN, look in the STOCK NUMBER column of the NSN index. The NSN is arranged in NIIN sequence. Note the figure and item number next to the NSN.

Second, turn to the figure and locate the item number. Verify that the item is the one you are looking for.

**When Part Number is known.** First, if you have the P/N and not the NSN, look in the PART NUMBER column of the P/N index. Identify the figure and item number.

Second, look up the item on the figure in the applicable repair parts list.

THIS PAGE INTENTIONALLY LEFT BLANK

THIS PAGE INTENTIONALLY LEFT BLANK

UNIT AND DIRECT SUPPORT MAINTENANCE  
REFRIGERATION UNIT, MECHANICAL, 9K BTU, ELECTRIC  
MODEL F9000RE  
PANELS AND GUARDS

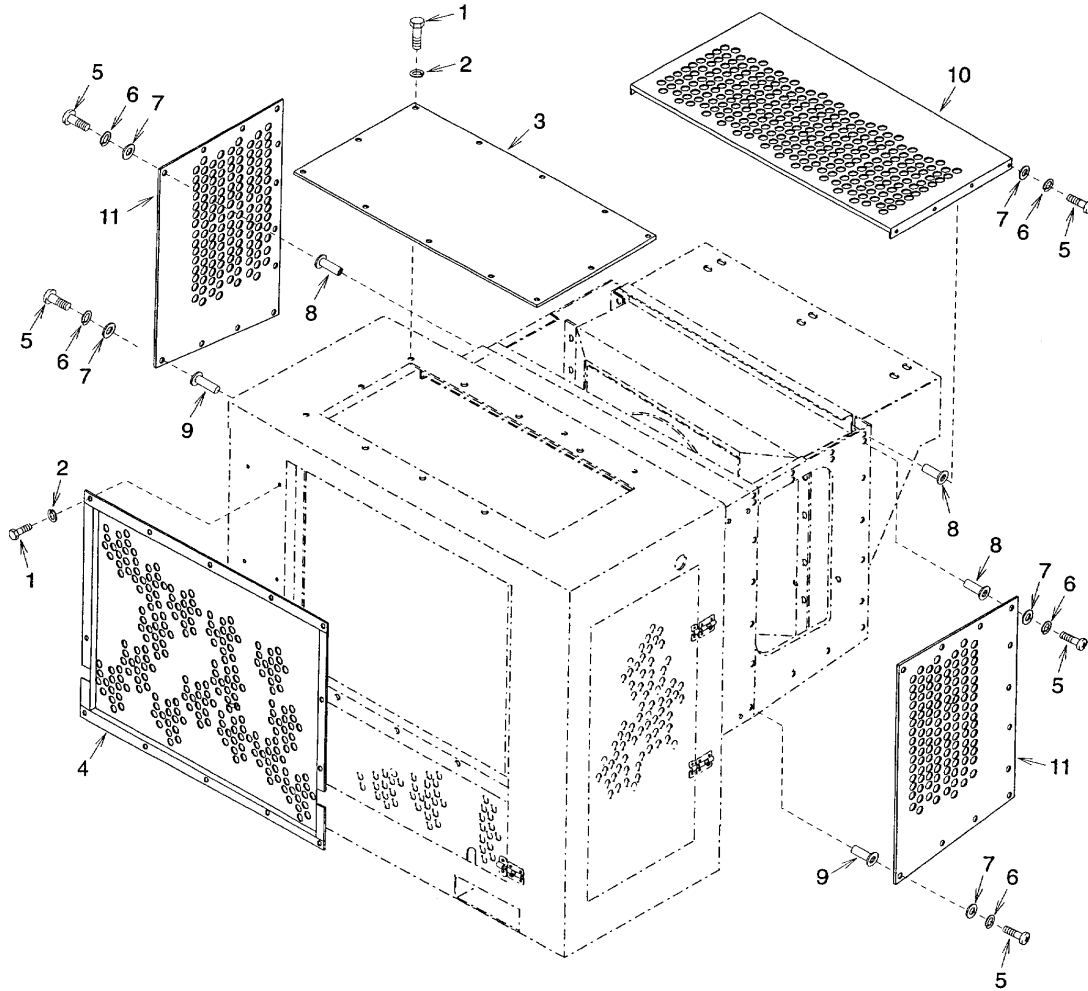


Figure 1. Panels and Guards



**GROUP 01 PANELS AND GUARDS  
REPAIR PARTS LIST**

(1) ITEM NO.	(2) SMR CODE	(3) NSN	(4) CAGEC	(5) PART NUMBER	(6) DESCRIPTION AND USABLE ON CODE (UOC)	(7) QTY
GROUP 01 PANELS AND GUARDS						
FIG. 1 PANELS AND GUARDS						
1	XDOZZ		94833	500K1928-19	BOLT,HEX HEAD	28
2	XDOZZ		94833	500K1950-3	WASHER,LOCK	28
3	PBOZZ	5340-01-483-6203	94833	152K0084-1	COVER,ACCESS	1
4	PBOZZ	5340-01-483-6225	94833	152K0068-1	COVER, ACCESS	1
5	PAOZZ	5305-00-054-6672	96906	MS51957-47	SCREW, MACHINE	40
6	XDOZZ		94833	500K1950-2	WASHER, LOCK	40
7	XDOZZ		94833	500K1926-2	WASHER, FLAT	40
8	PAOZZ	5310-00-068-1322	96906	MS27130-CR93K	NUT, PLAIN, BLIND RIVET	30
9	PAOZZ	5310-00-122-7281	80205	NAS1330C08KB106	NUT, PLAIN, BLIND RIVET	10
10	PBOZZ	5340-01-483-6474	94833	152K0030-1	COVER, ACCESS	1
11	PBOZZ	5340-01-483-6453	94833	152K0029-1	COVER, ACCESS	2
END OF FIGURE						

THIS PAGE INTENTIONALLY LEFT BLANK

THIS PAGE INTENTIONALLY LEFT BLANK

UNIT AND DIRECT SUPPORT MAINTENANCE  
REFRIGERATION UNIT, MECHANICAL, 9K BTU, ELECTRIC  
MODEL F9000RE  
CONTROL BOX ASSEMBLY

2  
3 THRU 6 AND FIGURES 3 AND 4

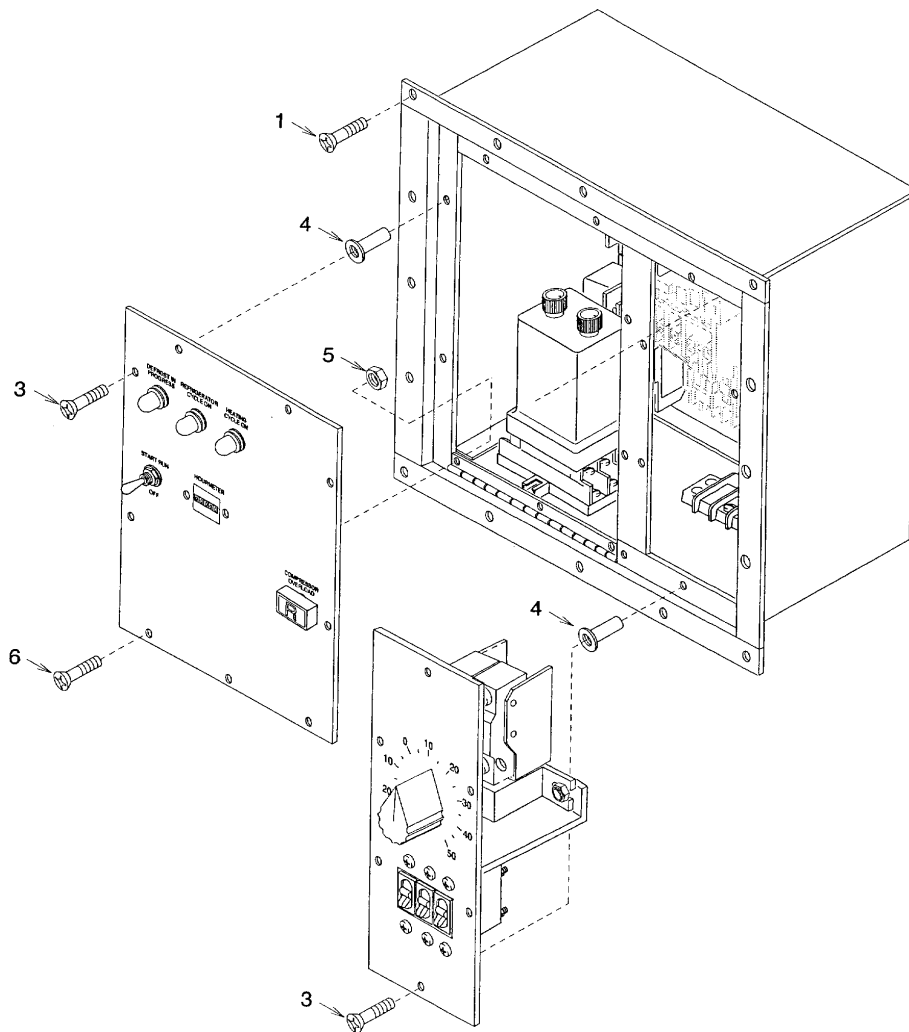


Figure 2. Control Box Assembly

**GROUP 02 ELECTRICAL AND CONTROL SYSTEM  
CONTROL BOX ASSEMBLY  
REPAIR PARTS LIST**

(1) ITEM NO.	(2) SMR CODE	(3) NSN	(4) CAGEC	(5) PART NUMBER	(6) DESCRIPTION AND USABLE ON CODE (UOC)	(7) QTY
					GROUP 02 ELECTRICAL AND CONTROL SYSTEM	
					FIG. 2 CONTROL BOX ASSEMBLY	
1	PAOZZ	5305-00-900-0567	96906	MS24693-C70	SCREW, MACHINE	4
2	XDOOO		94833	152K0009-1	CONTROL BOX ASSY	1
3	PAOZZ	5305-00-780-1131	96906	MS24693-C72	SCREW, MACHINE	12
4	PAOZZ	5310-01-167-2415	96906	MS27130-CR19K	NUT, PLAIN, BLIND RIVET	12
5	XDOZZ		94833	500K1927-1	NUT, SELF-LOCKING	3
6	PAOZZ	5305-00-066-7327	96906	MS24693-C28	SCREW, MACHINE	3
END OF FIGURE						

THIS PAGE INTENTIONALLY LEFT BLANK

THIS PAGE INTENTIONALLY LEFT BLANK

UNIT MAINTENANCE

REFRIGERATION UNIT, MECHANICAL, 9K BTU, ELECTRIC

MODEL F9000RE

CONTROL BOX WIRES AND CABLES

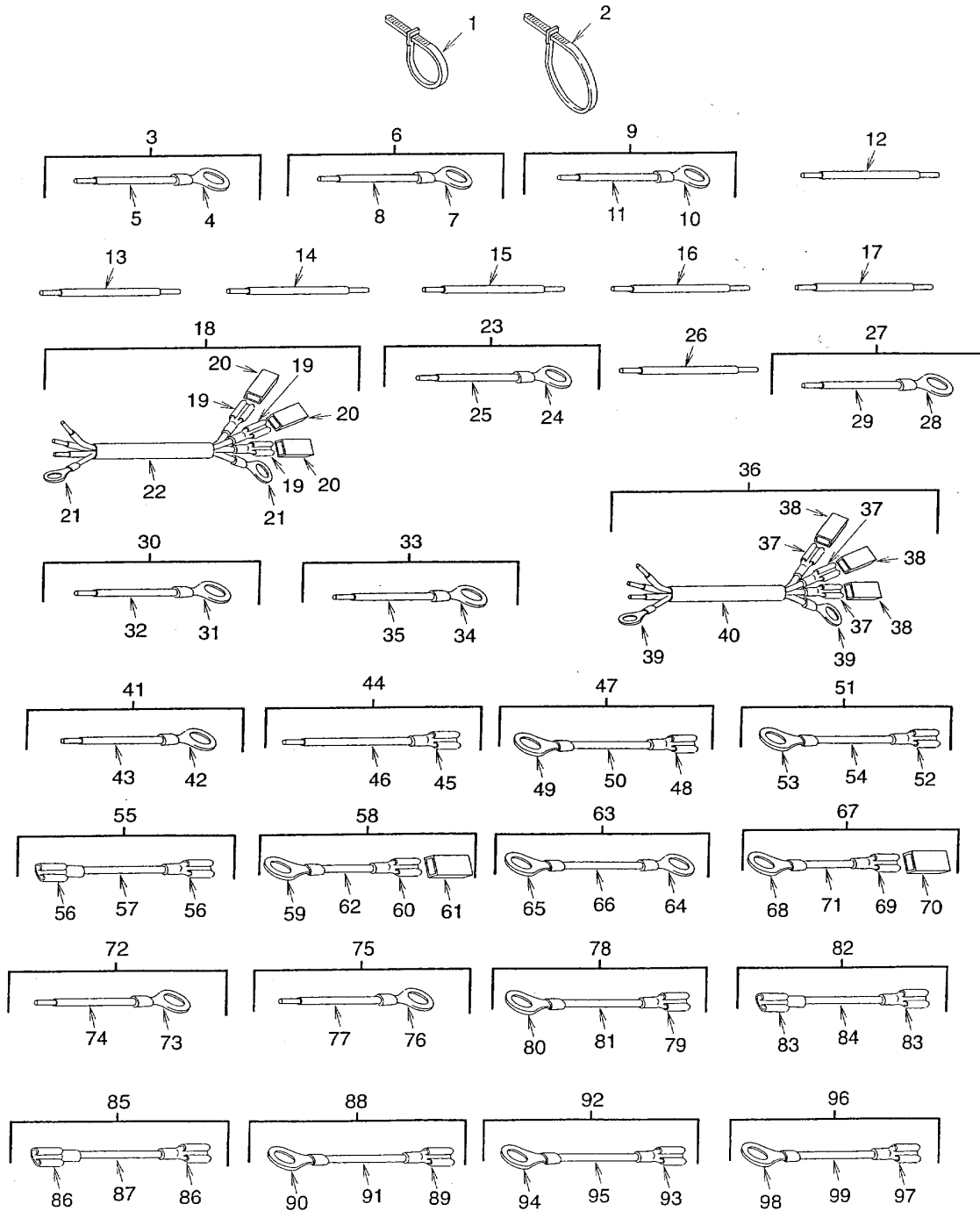


Figure 3. Control Box Wires and Cables (Sheet 1 of 3)



UNIT MAINTENANCE

REFRIGERATION UNIT, MECHANICAL, 9K BTU, ELECTRIC

MODEL F9000RE

CONTROL BOX WIRES AND CABLES

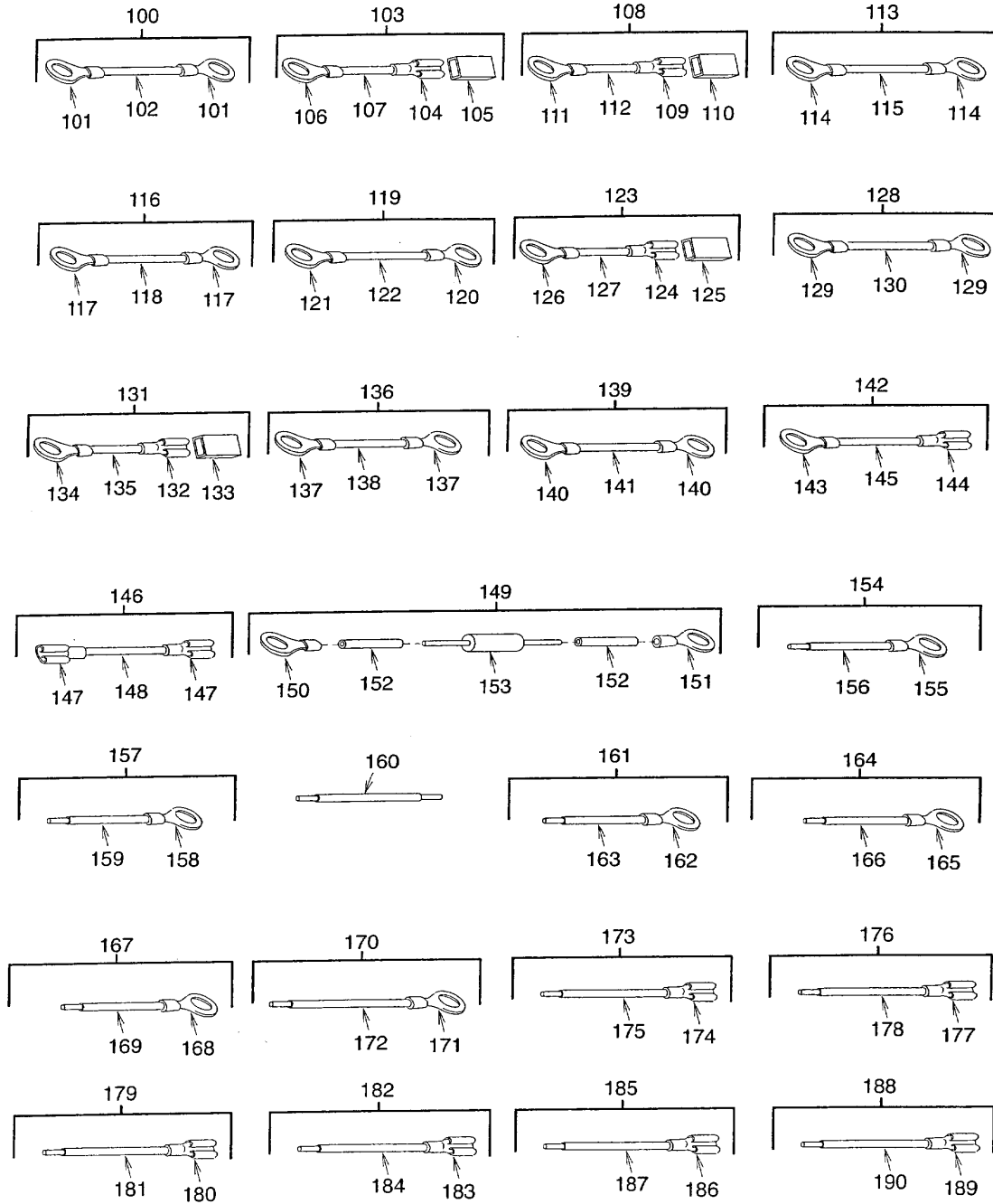


Figure 3. Control Box Wires and Cables (Sheet 2 of 3)

UNIT MAINTENANCE

REFRIGERATION UNIT, MECHANICAL, 9K BTU, ELECTRIC

MODEL F9000RE

CONTROL BOX WIRES AND CABLES

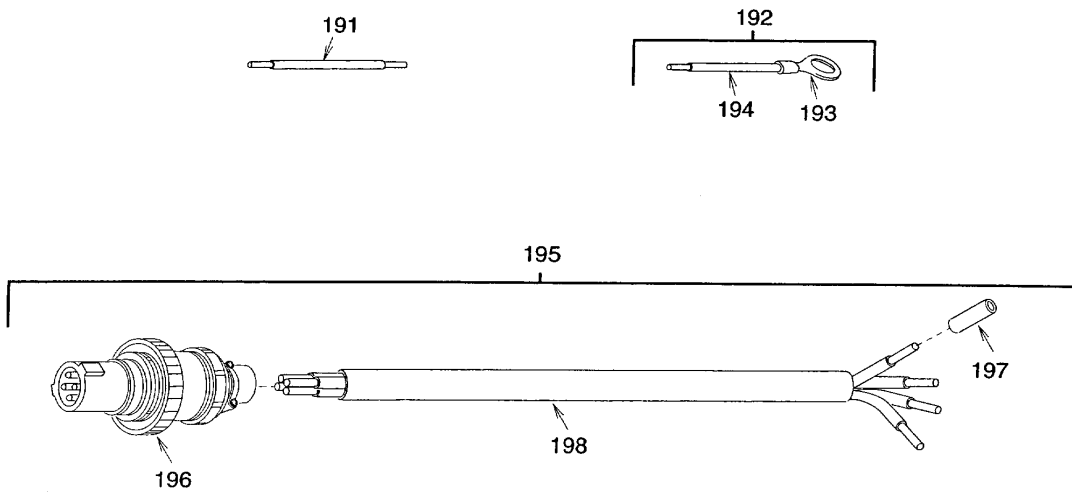


Figure 3. Control Box Wires and Cables (Sheet 3 of 3)

**GROUP 02 ELECTRICAL AND CONTROL SYSTEM  
CONTROL BOX WIRES AND CABLES  
REPAIR PARTS LIST**

(1) ITEM NO.	(2) SMR CODE	(3) NSN	(4) CAGEC	(5) PART NUMBER	(6) DESCRIPTION AND USABLE ON CODE (UOC)	(7) QTY
					GROUP 02 ELECTRICAL AND CONTROL SYSTEM	
					FIG. 3 CONTROL BOX WIRES AND CABLES	
1	PAOZZ	5975-00-156-3253	96906	MS3367-2-9	STRAP, TIEDOWN, ELECTRICAL	10
2	PAOZZ	5975-00-727-5153	96906	MS3367-4-9	STRAP, TIEDOWN, ELECTRICAL	10
3	AOOOO		94833	152K0021-1	LEAD, ELECTRICAL	1
4	PAOZZ	5940-00-143-4794	96906	MS25036-112	TERMINAL, LUG	1
5	MOOZZ		94833	152K0021-1/1	WIRE, ELECTRICAL, MAKE FROM WIRE ELECTRICAL ,M5086/2-12-9, 36 IN. LG.	1
6	AOOOO		94833	152K0021-2	LEAD, ELECTRICAL	1
7	PAOZZ	5940-00-143-4794	96906	MS25036-112	TERMINAL, LUG	1
8	MOOZZ		94833	152K0021-2/1	WIRE, ELECTRICAL, MAKE FROM WIRE ELECTRICAL ,M5086/2-12-9, 36 IN. LG.	1
9	AOOOO		94833	152K0021-3	LEAD, ELECTRICAL	1
10	PAOZZ	5940-00-143-4794	96906	MS25036-112	TERMINAL, LUG	1
11	MOOZZ		94833	152K0021-3/1	WIRE, ELECTRICAL, MAKE FROM WIRE ELECTRICAL, M5086/2-12-9, 36 IN. LG.	1
12	MOOZZ		94833	152K0021-4	LEAD, ELECTRICAL, MAKE FROM WIRE ELECTRICAL, M5086/2-14-9, 11.5 IN. LG.	1
13	MOOZZ		94833	152K0021-5	LEAD. ELECTRICAL. MAKE FROM WIRE ELECTRICAL, M5086/2-14-9, 11.5 IN LG.	1

**GROUP 02 ELECTRICAL AND CONTROL SYSTEM  
CONTROL BOX WIRES AND CABLES  
REPAIR PARTS LIST**

(1) ITEM NO.	(2) SMR CODE	(3) NSN	(4) CAGEC	(5) PART NUMBER	(6) DESCRIPTION AND USABLE ON CODE (UOC)	(7) QTY
					GROUP 02 ELECTRICAL CONTROL SYSTEM	
					FIG. 3 CONTROL BOX WIRES AND CABLES	
14	MOOZZ		94833	152K0021-6	LEAD, ELECTRICAL, MAKE FROM WIRE ELECTRICAL, M5086/2-14-9 , 11.5 IN. LG.	1
15	MOOZZ		94833	152K0021-7	LEAD,ELECTRICAL , MAKE FROM WIRE ELECTRICAL, M5086/2-14-9, 13 IN. LG.	1
16	MOOZZ		94833	152K0021-8	LEAD, ELECTRICAL, MAKE FROM WIRE ELECTRICAL, M5086/2-14-9, 14 IN. LG.	1
17	MOOZZ		94833	152K0021-9	LEAD, ELECTRICAL, MAKE FROM WIRE ELECTRICAL, M5086/2-149, 15 IN. LG.	1
18	AOOOO		94833	152K0021-10 TO 13	CABLE	1
19	PAOZZ	5940-00-143-4661	89346	165565R1	TERMINAL, QUICK DISCONNECT	3
20	PAOZZ	5970-00-494-8285	00779	480054-3	INSULATOR, HOUSING	3
21	PAOZZ	5940-00-143-4794	96906	MS25036-112	TERMINAL, LUG	2
22	MOOZZ		94833	152K0021-10/13	CABLE, MAKE FROM CABLE, POWER (94833) , 500K1915-5, 120 IN. LG.	1
23	AOOOO		94833	152K0021-14	LEAD, ELECTRICAL	1
24	PAOZZ	5940-00-143-4771	96906	MS25036-103	TERMINAL, LUG	1
25	MOOZZ		94833	152K0021-14/3	WIRE ,ELECTRICAL, MAKE FROM WIRE, ELECTRICAL, M5086/2-18-9, 24 IN. LG.	1

**GROUP 02 ELECTRICAL AND CONTROL SYSTEM  
CONTROL BOX WIRES AND CABLES  
REPAIR PARTS LIST**

(1) ITEM NO.	(2) SMR CODE	(3) NSN	(4) CAGEC	(5) PART NUMBER	(6) DESCRIPTION AND USABLE ON CODE (UOC)	(7) QTY
					GROUP 02 ELECTRICAL AND CONTROL SYSTEM	
					FIG. 3 CONTROL BOX WIRES AND CABLES	
26	MOOZZ		94833	152K0021-15	LEAD, ELECTRICAL MAKE FROM WIRE ELECTRICAL, M5086/2-18-9, 12 IN. LG.	1
27	AOOOO		94833	152K0021-16	LEAD, ELECTRICAL	1
28	PAOZZ	5940-00-204-8966	96906	MS25036-102	TERMINAL, LUG	1
29	MOOZZ		94833	152K0021-16/3	WIRE, ELECTRICAL, MAKE FROM WIRE ELECTRICAL, M5086/2-18-9 20 IN. LG.	1
30	AOOOO		94833	152K0021-17	LEAD, ELECTRICAL	1
31	PAOZZ	5940-00-204-8966	96906	MS25036-102	TERMINAL, LUG	1
32	MOOZZ		94833	152K0021-17/3	WIRE, ELECTRICAL, MAKE FROM WIRE ELECTRICAL, M5086/2-18-9, 120 IN. LG.	1
33	AOOOO		94833	152K0021-18	LEAD, ELECTRICAL	1
34	PAOZZ	5940-00-204-8966	96906	MS25036-102	TERMINAL, LUG	1
35	MOOZZ		94833	152K0021-18/3	WIRE, ELECTRICAL, MAKE FROM WIRE ELECTRICAL, M5086/2-18-9, 120 IN. LG.	1
36	AOOOO		94833	152K0021-19 TO 22	CABLE	1
37	PAOZZ	5940-00-143-4661	89346	165565R1	TERMINAL, QUICK DISCONNECT	3
38	PAOZZ	5970-00-494-8285	00779	480054-3	INSULATOR, HOUSING	3
39	PAOZZ	5940-00-143-4780	96906	MS25036-108	TERMINAL, LUG	2

**GROUP 02 ELECTRICAL AND CONTROL SYSTEM  
CONTROL BOX WIRES AND CABLES  
REPAIR PARTS LIST**

(1) ITEM NO.	(2) SMR CODE	(3) NSN	(4) CAGEC	(5) PART NUMBER	(6) DESCRIPTION AND USABLE ON CODE (UOC)	(7) QTY
GROUP 02 ELECTRICAL AND CONTROL SYSTEM						
FIG. 3 CONTROL BOX WIRES AND CABLES						
40	MOOZZ		94833	152K0021-19/14	CABLE MAKE FROM CABLE,POWER (94833) 500K1915-5, 120 IN LG	1
41	AOOOO		94833	152K0021-23	LEAD,ELECTRICAL	1
42	PAOZZ	5940-00-204-8966	96906	MS25036-102	TERMINAL,LUG	1
43	MOOZZ		94833	152K0021-23/3	WIRE,ELECTRICAL MAKE FROM WIRE, ELECTRICAL,M5086/2-18-9, 12 IN LG	1
44	AOOOO		94833	152K0021-24	LEAD,ELECTRICAL	1
45	PAOZZ	5940-00-948-9686	97403	13216E6191-1	TERMINAL,QUICK DISCONNECT	1
46	MOOZZ		94833	152K0021-24/3	WIRE,ELECTRICAL MAKE FROM WIRE, ELECTRICAL,M5086/2-18-9, 12 IN LG	1
47	AOOOO		94833	152K0021-25	LEAD,ELECTRICAL	1
48	XDOZZ		1W654	B-972	TERMINAL,FEMALE	1
49	PAOZZ	5940-00-204-8966	96906	MS25036-102	TERMINAL,LUG	1
50	MOOZZ		94833	152K0021-25/3	WIRE,ELECTRICAL MAKE FROM WIRE, ELECTRICAL,M5086/2-18-9, 120 IN LG	1
51	AOOOO		94833	152K0021-26	LEAD,ELECTRICAL	1
52	PAOZZ	5940-00-948-9686	97403	13216E6191-1	TERMINAL,QUICK DISCONNECT	1
53	PAOZZ	5940-00-204-8966	96906	MS25036-102	TERMINAL,LUG	100

**GROUP 02 ELECTRICAL AND CONTROL SYSTEM  
CONTROL BOX WIRES AND CABLES  
REPAIR PARTS LIST**

(1) ITEM NO.	(2) SMR CODE	(3) NSN	(4) CAGEC	(5) PART NUMBER	(6) DESCRIPTION AND USABLE ON CODE (UOC)	(7) QTY
					GROUP 02 ELECTRICAL AND CONTROL SYSTEM	
					FIG. 3 CONTROL BOX WIRES AND CABLES	
54	MOOZZ		94833	152K0021-26/3	WIRE,ELECTRICAL MAKE FROM WIRE, ELECTRICAL,M5086/2-18-9, 24 IN LG	1
55	AOOOO		94833	152K0021-27	LEAD,ELECTRICAL	1
56	PAOZZ	5940-00-948-9686	97403	13216E6191-1	TERMINAL,QUICK DISCONNECT	2
57	MOOZZ		94833	152K0021-27/3	WIRE,ELECTRICAL MAKE FROM WIRE, ELECTRICAL,M5086/2-18-9, 12 IN LG	1
58	AOOOO		94833	152K0021-28	LEAD,ELECTRICAL	1
59	PAOZZ	5940-00-557-1629	96906	MS25036-149	TERMINAL,LUG	1
60	PAOZZ	5940-00-620-9780	00779	42282-2	TERMINAL,QUICK DISCONNECT	1
61	PAOZZ	5970-00-494-8285	00779	480054-3	INSULATOR,HOUSING	1
62	MOOZZ		94833	152K0021-28/3	WIRE,ELECTRICAL MAKE FROM WIRE, ELECTRICAL,M5086/2-18-9, 120 IN LG	1
63	AOOOO		94833	152K0021-29	LEAD,ELECTRICAL	1
64	PAOZZ	5940-00-557-1629	96906	MS25036-149	TERMINAL,LUG	1
65	PAOZZ	5940-00-204-8966	96906	MS25036-102	TERMINAL,LUG	1
66	MOOZZ		94833	152K0021-29/3	WIRE,ELECTRICAL MAKE FROM WIRE, ELECTRICAL,M5086/2-18-9, 120 IN LG	1
67	AOOOO		94833	152K0021-30	LEAD,ELECTRICAL	1

**GROUP 02 ELECTRICAL AND CONTROL SYSTEM  
CONTROL BOX WIRES AND CABLES  
REPAIR PARTS LIST**

(1) ITEM NO.	(2) SMR CODE	(3) NSN	(4) CAGEC	(5) PART NUMBER	(6) DESCRIPTION AND USABLE ON CODE (UOC)	(7) QTY
					GROUP 02 ELECTRICAL AND CONTROL SYSTEM	
					FIG. 3 CONTROL BOX WIRES AND CABLES	
68	PAOZZ	5940-00-557-1629	96906	MS25036-149	TERMINAL,LUG	1
69	PAOZZ	5940-00-620-9780	00779	42282-2	TERMINAL,QUICK DISCONNECT	1
70	PAOZZ	5970-00-494-8285	00779	480054-3	INSULATOR,HOUSING	1
71	MOOZZ		94833	152K0021-30/3	WIRE,ELECTRICAL MAKE FROM WIRE, ELECTRICAL,M5086/2-18-9, 120 IN LG	1
72	AOOOO		94833	152K0021-31	LEAD,ELECTRICAL	1
73	PAOZZ	5940-00-204-8966	96906	MS25036-102	TERMINAL,LUG	1
74	MOOZZ		94833	152K0021-31/3	WIRE,ELECTRICAL MAKE FROM WIRE, ELECTRIC,M5086/2-18-9, 120 IN LG	1
75	AOOOO		94833	152K0021-32	LEAD,ELECTRICAL	1
76	PAOZZ	5940-00-204-8966	96906	MS25036-102	TERMINAL,LUG	1
77	MOOZZ		94833	152K0021-32/3	WIRE,ELECTRICAL MAKE FROM WIRE, ELECTRIC,M5086/2-18-9, 12 IN LG	1
78	AOOOO		94833	152K0021-33	LEAD,ELECTRICAL	1
79	PAOZZ	5940-00-948-9686	97403	13216E6191-1	TERMINAL,QUICK DISCONNECT	1
80	PAOZZ	5940-00-204-8966	96906	MS25036-102	TERMINAL,LUG	1
81	MOOZZ		94833	152K0021-33/3	WIRE,ELECTRICAL MAKE FROM WIRE, ELECTRICAL,M5086/2-18-9, 4 IN LG	1



**GROUP 02 ELECTRICAL AND CONTROL SYSTEM  
CONTROL BOX WIRES AND CABLES  
REPAIR PARTS LIST**

(1) ITEM NO.	(2) SMR CODE	(3) NSN	(4) CAGEC	(5) PART NUMBER	(6) DESCRIPTION AND USABLE ON CODE (UOC)	(7) QTY
					GROUP 02 ELECTRICAL AND CONTROL SYSTEM	
					FIG. 3 CONTROL BOX WIRES AND CABLES	
82	A0000		94833	152K0021-34	LEAD,ELECTRICAL	1
83	PAOZZ	5940-00-948-9686	97403	13216E6191-1	TERMINAL,QUICK DISCONNECT	2
84	MOOZZ		94833	152K0021-34/3	WIRE,ELECTRICAL MAKE FROM WIRE, ELECTRICAL,M5086/2-18-9, 12 IN LG	1
85	A0000		94833	152K0021-35	LEAD,ELECTRICAL	1
86	PAOZZ	5940-00-948-9686	97403	13216E6191-1	TERMINAL,QUICK DISCONNECT	2
87	MOOZZ		94833	152K0021-35/3	WIRE,ELECTRICAL MAKE FROM WIRE, ELECTRICAL,M5086/2-18-9, 76 IN LG	1
88	A0000		94833	152K0021-36	LEAD,ELECTRICAL	1
89	PAOZZ	5940-00-948-9686	97403	13216E6191-1	TERMINAL,QUICK DISCONNECT	1
90	PAOZZ	5940-00-143-4771	96906	MS25036-103	TERMINAL,LUG	1
91	MOOZZ		94833	152K0021-36/3	WIRE,ELECTRICAL MAKE FROM WIRE, ELECTRICAL,M5086/2-18-9, 24 IN LG	1
92	A0000		94833	152K0021-37	LEAD,ELECTRICAL	1
93	PAOZZ	5940-00-948-9686	97403	13216E6191-1	TERMINAL,QUICK DISCONNECT	1
94	PAOZZ	5940-00-204-8966	96906	MS25036-102	TERMINAL,LUG	1
95	MOOZZ		94833	152K0021-37/3	WIRE,ELECTRICAL MAKE FROM WIRE, ELECTRIC,M5086/2-18-9, 12 IN LG	1

**GROUP 02 ELECTRICAL AND CONTROL SYSTEM  
CONTROL BOX WIRES AND CABLES  
REPAIR PARTS LIST**

(1) ITEM NO.	(2) SMR CODE	(3) NSN	(4) CAGEC	(5) PART NUMBER	(6) DESCRIPTION AND USABLE ON CODE (UOC)	(7) QTY
					GROUP 02 ELECTRICAL AND CONTROL SYSTEM	
					FIG. 3 CONTROL BOX WIRES AND CABLES	
96	AOOOO		94833	152K0021-38	LEAD,ELECTRICAL	1
97	PAOZZ	5940-00-948-9686	97403	13216E6191-1	TERMINAL,QUICK DISCONNECT	1
98	PAOZZ	5940-00-204-8966	96906	MS25036-102	TERMINAL,LUG	1
99	MOOZZ		94833	152K0021-38/3	WIRE,ELECTRICAL MAKE FROM WIRE, ELECTRICAL,M5086/2-18-9, 12 IN LG	1
100	AOOOO		94833	152K0021-39	LEAD,ELECTRICAL	1
101	PAOZZ	5940-00-204-8966	96906	MS25036-102	TERMINAL,LUG	2
102	MOOZZ		94833	152K0021-39/3	WIRE,ELECTRICAL MAKE FROM WIRE, ELECTRICAL,M5086/2-18-9, 24 IN LG	1
103	AOOOO		94833	152K0021-40	LEAD,ELECTRICAL	1
104	XDOZZ		19200	12712937-2	TERMINAL,QUICK DISCONNECT	1
105	PAOZZ	5970-00-494-8285	00779	480054-3	INSULATOR,HOUSING	1
106	PAOZZ	5940-00-204-8966	96906	MS25036-102	TERMINAL,LUG	1
107	MOOZZ		94833	152K0021-40/3	WIRE,ELECTRICAL MAKE FROM WIRE, ELECTRIC,M5086/2-18-9, 120 IN LG	1
108	AOOOO		94833	152K0021-41	LEAD,ELECTRICAL	1
109	XDOZZ		19200	12712937-2	TERMINAL,QUICK DISCONNECT	1
110	PAOZZ	5970-00-494-8285	00779	480054-3	INSULATOR,HOUSING	1

**GROUP 02 ELECTRICAL AND CONTROL SYSTEM  
CONTROL BOX WIRES AND CABLES  
REPAIR PARTS LIST**

(1) ITEM NO.	(2) SMR CODE	(3) NSN	(4) CAGEC	(5) PART NUMBER	(6) DESCRIPTION AND USABLE ON CODE (UOC)	(7) QTY
					GROUP 02 ELECTRICAL AND CONTROL SYSTEM	
					FIG. 3 CONTROL BOX WIRES AND CABLES	
111	PAOZZ	5940-00-204-8966	96906	MS25036-102	TERMINAL,LUG	1
112	MOOZZ		94833	152K0021-41/3	WIRE,ELECTRICAL MAKE FROM WIRE, ELECTRIC,M5086/2-18-9, 120 IN LG	1
113	AOOOO		94833	152K0021-42	LEAD,ELECTRICAL	1
114	PAOZZ	5940-00-204-8966	96906	MS25036-102	TERMINAL,LUG	2
115	MOOZZ		94833	152K0021-42/3	WIRE,ELECTRICAL MAKE FROM WIRE, ELECTRICAL,M5086/2-18-9, 24.00 IN LG	1
116	AOOOO		94833	152K0021-43	LEAD,ELECTRICAL	1
117	PAOZZ	5940-00-204-8966	96906	MS25036-102	TERMINAL,LUG	2
118	MOOZZ		94833	152K0021-43/3	WIRE,ELECTRICAL MAKE FROM WIRE, ELECTRICAL,M5086/2-18-9, 24 IN LG	1
119	AOOOO		94833	152K0021-44	LEAD,ELECTRICAL	1
120	PAOZZ	5940-00-204-8966	96906	MS25036-102	TERMINAL,LUG	1
121	PAOZZ	5940-00-143-4771	96906	MS25036-103	TERMINAL,LUG	1
122	MOOZZ		94833	152K0021-44/3	WIRE,ELECTRICAL MAKE FROM WIRE, ELECTRICAL,M5086/2-18-9, 24 IN LG	1
123	AOOOO		94833	152K0021-45	LEAD,ELECTRICAL	1
124	PAOZZ	5940-00-620-9780	00779	42282-2	TERMINAL,QUICK DISCONNECT	1

**GROUP 02 ELECTRICAL AND CONTROL SYSTEM  
CONTROL BOX WIRES AND CABLES  
REPAIR PARTS LIST**

(1) ITEM NO.	(2) SMR CODE	(3) NSN	(4) CAGEC	(5) PART NUMBER	(6) DESCRIPTION AND USABLE ON CODE (UOC)	(7) QTY
GROUP 02 ELECTRICAL AND CONTROL SYSTEM						
FIG. 3 CONTROL BOX WIRES AND CABLES						
125	PAOZZ	5970-00-494-8285	00779	480054-3	INSULATOR,HOUSING	1
126	PAOZZ	5940-00-204-8966	96906	MS25036-102	TERMINAL,LUG	1
127	MOOZZ		94833	152K0021-45/3	WIRE,ELECTRICAL MAKE FROM WIRE, ELECTRICAL,M5086/2-18-9, 120 IN LG..	1
128	AOOOO		94833	152K0021-46	LEAD,ELECTRICAL	1
129	PAOZZ	5940-00-204-8966	96906	MS25036-102	TERMINAL,LUG	1
130	MOOZZ		94833	152K0021-46/3	WIRE,ELECTRICAL MAKE FROM WIRE, ELECTRICAL,M5086/2-18-9, 24 IN LG	1
131	AOOOO		94833	152K0021-47	LEAD,ELECTRICAL	1
132	PAOZZ	5940-00-620-9780	00779	42282-2	TERMINAL,QUICK DISCONNECT	1
133	PAOZZ	5970-00-494-8285	00779	480054-3	INSULATOR,HOUSING	1
134	PAOZZ	5940-00-204-8966	96906	MS25036-102	TERMINAL,LUG	1
135	MOOZZ		94833	152K0021-47/3	WIRE,ELECTRICAL MAKE FROM WIRE, ELECTRICAL,M5086/2-18-9, 120 IN. LG.	1
136	AOOOO		94833	152K0021-48	LEAD,ELECTRICAL	10
137	PAOZZ	5940-00-204-8966	96906	MS25036-102	TERMINAL,LUG	2
138	MOOZZ		94833	152K0021-48/3	WIRE,ELECTRICAL MAKE FROM WIRE, ELECTRICAL,M5086/2-18-9, 120 IN LG	1

**GROUP 02 ELECTRICAL AND CONTROL SYSTEM  
CONTROL BOX WIRES AND CABLES  
REPAIR PARTS LIST**

(1) ITEM NO.	(2) SMR CODE	(3) NSN	(4) CAGEC	(5) PART NUMBER	(6) DESCRIPTION AND USABLE ON CODE (UOC)	(7) QTY
					GROUP 02 ELECTRICAL AND CONTROL SYSTEM	
					FIG. 3 CONTROL BOX WIRES AND CABLES	
139	A0000		94833	152K0021-49	LEAD,ELECTRICAL	1
140	PAOZZ	5940-00-143-4794	96906	MS25036-112	TERMINAL,LUG	2
141	MOOZZ		94833	152K0021-49/1	WIRE,ELECTRICAL MAKE FROM WIRE, ELECTRICAL,M5086/2-12-9, 15 IN LG	1
142	A0000		94833	152K0021-50	LEAD,ELECTRICAL	1
143	PAOZZ	5940-00-557-1629	96906	MS25036-149	TERMINAL,LUG	1
144	XDOZZ		1W654	B-972	TERMINAL,FEMALE	1
145	MOOZZ		94833	152K0021-50/3	WIRE,ELECTRICAL MAKE FROM WIRE, ELECTRICAL,M5086/2-18-9, 120IN LG	1
146	A0000		94833	152K0021-51	LEAD,ELECTRICAL	1
147	XDOZZ		1W654	B-972	TERMINAL,FEMALE	2
148	MOOZZ		94833	152K0021-51/3	WIRE,ELECTRICAL MAKE FROM WIRE, ELECTRICAL,M5086/2-18-9, 120 IN LG	1
149	A0000		94833	151K0042-1	RESISTOR ASSEMBLY	3
150	PAOZZ	5940-00-557-1629	96906	MS25036-149	TERMINAL,LUG	1
151	PAOZZ	5940-00-113-9828	96906	MS25036-148	TERMINAL,LUG	1

**GROUP 02 ELECTRICAL AND CONTROL SYSTEM  
CONTROL BOX WIRES AND CABLES  
REPAIR PARTS LIST**

(1) ITEM NO.	(2) SMR CODE	(3) NSN	(4) CAGEC	(5) PART NUMBER	(6) DESCRIPTION AND USABLE ON CODE (UOC)	(7) QTY
					GROUP 02 ELECTRICAL AND CONTROL SYSTEM	
					FIG. 3 CONTROL BOX WIRES AND CABLES	
152	MOOZZ		94833	151K0042-1/4	INSULATION,SLEEVING MAKE FROM INSULATION, SLEEVING M23053/5-102-0, 1-1/2 IN. LG	2
153	XDOZZ		12697	VC10F-5K	RESISTOR,10W	1
154	AOOOO		94833	152K0021-52	LEAD,ELECTRICAL	1
155	PAOZZ	5940-00-143-4774	96906	MS25036-153	TERMINAL,LUG	1
156	MOOZZ		94833	152K0021-52/2	WIRE,ELECTRICAL MAKE FROM WIRE, ELECTRICAL,M5086/2-14-9, 12 IN LG	1
157	AOOOO		94833	152K0021-53	LEAD,ELECTRICAL	1
158	PAOZZ	5940-00-143-4774	96906	MS25036-153	TERMINAL,LUG	1
159	MOOZZ		94833	152K0021-53/2	WIRE,ELECTRICAL MAKE FROM WIRE, ELECTRICAL,M5086/2-14-9, 12 IN LG	1
160	MOOZZ		94833	152K0021-54	LEAD,ELECTRICAL MAKE FROM WIRE, ELECTRICAL,M5086/2-18-9, 12 IN. LG	1
161	AOOOO		94833	152K0021-55	LEAD,ELECTRICAL	1
162	PAOZZ	5940-00-204-8966	96906	MS25036-102	TERMINAL,LUG	1

**GROUP 02 ELECTRICAL AND CONTROL SYSTEM  
CONTROL BOX WIRES AND CABLES  
REPAIR PARTS LIST**

(1) ITEM NO.	(2) SMR CODE	(3) NSN	(4) CAGEC	(5) PART NUMBER	(6) DESCRIPTION AND USABLE ON CODE (UOC)	(7) QTY
					GROUP 02 ELECTRICAL AND CONTROL SYSTEM	
					FIG. 3 CONTROL BOX WIRES AND CABLES	
163	MOOZZ		94833	152K0021-55/3	WIRE,ELECTRICAL MAKE FROM WIRE, ELECTRICAL,M5086/2-18-9, 24 IN LG	1
164	AOOOO		94833	152K0021-56	LEAD,ELECTRICAL	1
165	PAOZZ	5940-00-204-8966	96906	MS25036-102	TERMINAL,LUG	1
166	MOOZZ		94833	152K0021-56/3	WIRE,ELECTRICAL MAKE FROM WIRE, ELECTRICAL,M5086/2-18-9, 24 IN LG	1
167	AOOOO		94833	152K0021-57	LEAD,ELECTRICAL	1
168	PAOZZ	5940-00-204-8966	96906	MS25036-102	TERMINAL,LUG	2
169	MOOZZ		94833	152K0021-57/3	WIRE,ELECTRICAL MAKE FROM WIRE, ELECTRICAL,M5086/2-18-9, 24 IN LG	1
170	AOOOO		94833	152K0021-58	LEAD,ELECTRICAL	1
171	PAOZZ	5940-00-204-8966	96906	MS25036-102	TERMINAL,LUG	1
172	MOOZZ		94833	152K0021-58/3	WIRE,ELECTRICAL MAKE FROM WIRE, ELECTRICAL,M5086/2-18-9, 15 IN LG	1
173	AOOOO		94833	152K0021-59	LEAD,ELECTRICAL	1
174	PAOZZ	5940-00-948-9686	97403	13216E6191-1	TERMINAL,QUICK DISCONNECT	1
175	MOOZZ		94833	152K0021-59/3	WIRE,ELECTRICAL MAKE FROM WIRE ELECTRICAL,M5086/2-18-9, 120 IN LG	1

**GROUP 02 ELECTRICAL AND CONTROL SYSTEM  
CONTROL BOX WIRES AND CABLES  
REPAIR PARTS LIST**

(1) ITEM NO.	(2) SMR CODE	(3) NSN	(4) CAGEC	(5) PART NUMBER	(6) DESCRIPTION AND USABLE ON CODE (UOC)	(7) QTY
					GROUP 02 ELECTRICAL AND CONTROL SYSTEM	
					FIG. 3 CONTROL BOX WIRES AND CABLES	
176	A0000		94833	152K0021-60	LEAD,ELECTRICAL	1
177	PAOZZ	5940-00-948-9686	97403	13216E6191-1	TERMINAL,QUICK DISCONNECT	1
178	MOOZZ		94833	152K0021-60/3	WIRE,ELECTRICAL MAKE FROM WIRE, ELECTRICAL,M5086/2-18-9, 120 IN LG	1
179	A0000		94833	152K0021-61	LEAD,ELECTRICAL	1
180	PAOZZ	5940-00-948-9686	97403	13216E6191-1	TERMINAL,QUICK DISCONNECT	1
181	MOOZZ		94833	152K0021-61/3	WIRE,ELECTRICAL MAKE FROM WIRE, ELECTRICAL,M5086/2-18-9, 120 IN LG	1
182	A0000		94833	152K0021-62	LEAD,ELECTRICAL	1
183	PAOZZ	5940-00-948-9686	97403	13216E6191-1	TERMINAL,QUICK DISCONNECT	1
184	MOOZZ		94833	152K0021-62/3	WIRE,ELECTRICAL MAKE FROM WIRE, ELECTRICAL,M5086/2-18-9, 60 IN LG	1
185	A0000		94833	152K0021-63	LEAD,ELECTRICAL	1
186	PAOZZ	5940-00-948-9686	97403	13216E6191-1	TERMINAL,QUICK DISCONNECT	1
187	MOOZZ		94833	152K0021-63/3	WIRE,ELECTRICAL MAKE FROM WIRE ELECTRICAL,M5086/2-18-9, 60 IN LG	1
188	A0000		94833	152K0021-64	LEAD,ELECTRICAL	1
189	PAOZZ	5940-00-948-9686	97403	13216E6191-1	TERMINAL,QUICK DISCONNECT	1



**GROUP 02 ELECTRICAL AND CONTROL SYSTEM  
CONTROL BOX WIRES AND CABLES  
REPAIR PARTS LIST**

(1) ITEM NO.	(2) SMR CODE	(3) NSN	(4) CAGEC	(5) PART NUMBER	(6) DESCRIPTION AND USABLE ON CODE (UOC)	(7) QTY
					GROUP 02 ELECTRICAL AND CONTROL SYSTEM	
					FIG. 3 CONTROL BOX WIRES AND CABLES	
190	MOOZZ		94833	152K0021-64/3	WIRE,ELECTRICAL MAKE FROM WIRE,ELECTRICAL,M5086/ 2-18-9,	1
191	MOOZZ		94833	152K0021-65	LEAD,ELECTRICAL MAKE FROM WIRE, ELECTRICAL,M5086/2-18-9, 24 IN LG	1
192	AOOOO		94833	152K0021-66	LEAD,ELECTRICAL	1
193	PAOZZ	5940-00-204-8966	96906	MS25036-102	TERMINAL,LUG	1
194	MOOZZ		94833	152K0021-66/3	WIRE,ELECTRICAL MAKE FROM WIRE, ELECTRICAL,M5086/2-18-9, 24 IN LG	1
195	AOOOO		94833	152K0011-1	CABLE ASSEMBLY,P1	1
196	PAOZZ	5935-01-4839141	03ZL1	HLP-6032-3C	CONNECTOR,PLUG,ELEC	1
197	MOOZZ		94833	152K0011-1/3	INSULATION,SLEEVING MAKE FROM INSULATION,SLEEVING, M23053/4-107-0, 2 IN LG	4
198	MOOZZ		94833	152K0011-1/2	CABLE MAKE FROM CABLE, POWER, 500K1915-5, 492 IN LG	1

THIS PAGE INTENTIONALLY LEFT BLANK

THIS PAGE INTENTIONALLY LEFT BLANK

UNIT MAINTENANCE

REFRIGERATION UNIT, MECHANICAL, 9K BTU, ELECTRIC

MODEL F9000RE

CONTROL BOX

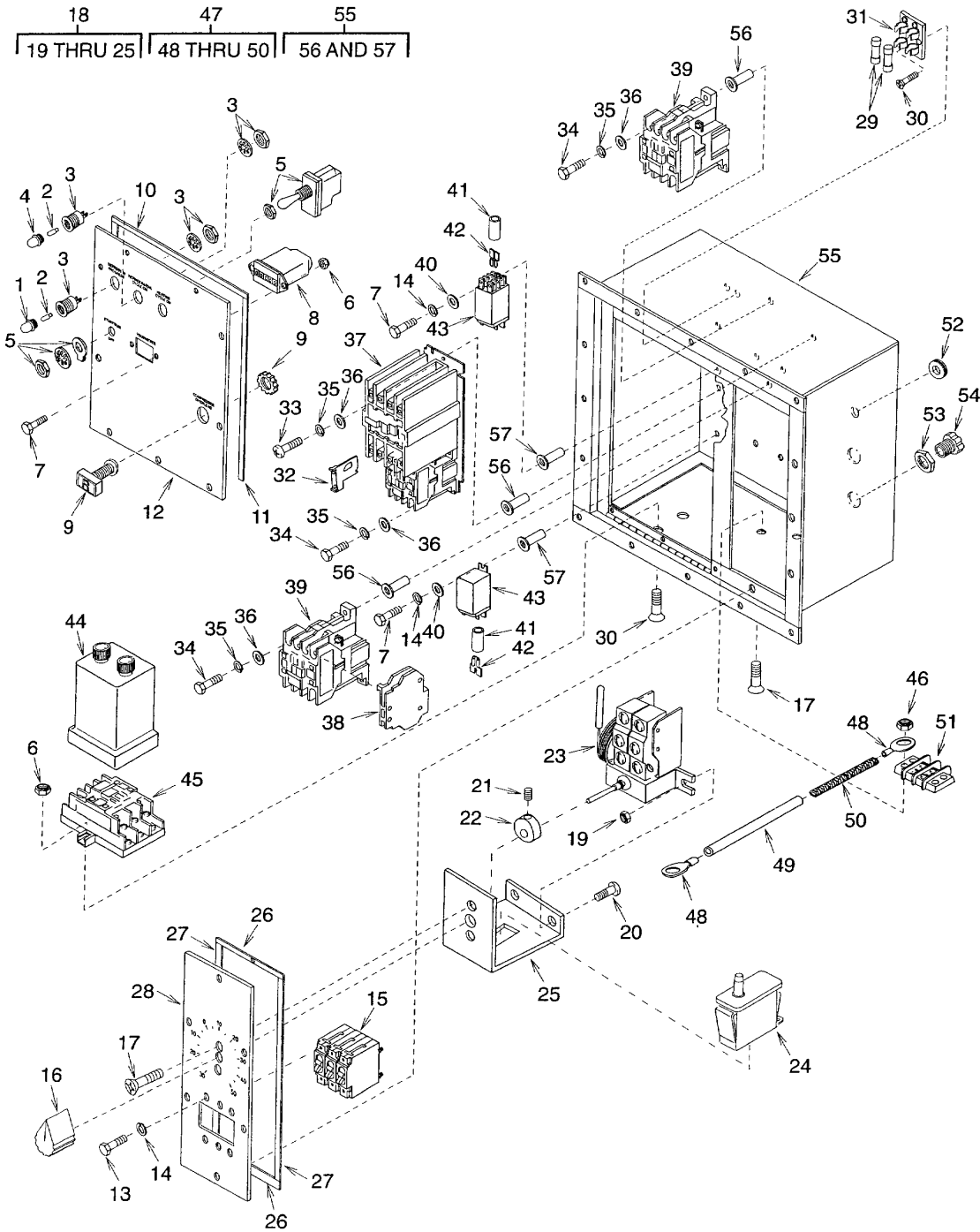


Figure 4. Control Box

**GROUP 02 ELECTRICAL AND CONTROL SYSTEM  
CONTROL BOX  
REPAIR PARTS LIST**

(1) ITEM NO.	(2) SMR CODE	(3) NSN	(4) CAGEC	(5) PART NUMBER	(6) DESCRIPTION AND USABLE ON CODE (UOC)	(7) QTY
					GROUP 02 ELECTRICAL AND CONTROL SYSTEM  FIG. 4 CONTROL BOX	
1	PAOZZ	6210-01-098-3886	83330	125-1191-403	LENS,LIGHT	1
2	PAOZZ	6240-00-939-7859	92966	120MB	LAMP,INCANDESCENT	3
3	PAOZZ	6210-00-840-0848	83330	125-0410-1132-403	LIGHT,INDICATOR	3
4	PAOZZ	6210-01-456-6895	83330	125-1132-403	LENS SET,LIGHT	2
5	PAOZZ	5930-00-683-1628	96906	MS24523-22	SWITCH,TOGGLE	1
6	XDOZZ		94833	500K1927-1	NUT,SELF-LOCKING	4
7	XDOZZ		94833	500K1928-5	BOLT,HEX HEAD	6
8	PAOZZ	6645-01-477-5316	74400	20007	METER,TIME TOTALIZING	1
9	PAOZZ	5930-01-483-4018	94833	152K0118-1	PUSH BUTTON	1
10	MOOZZ		94833	152K0036	GASKET,CONTROL TOP MAKE FROM RUBBER GASKET (94833)555K5004-2HN-07-21/ 0.125 THK (0.50 X 8.31)	1
11	MOOZZ		94833	152K0037	GASKET,CONTROL BOX MAKE FROM GASKET (94833)555K5004-2HN-07-21/ 0.125THK (0.50 X 11.78)	2
12	PBOZZ	5340-01-483-6492	94833	152K0010-1	DOOR,ACCESS,GENERAL	2
13	XDOZZ		94833	500K1928-1	BOLT,HEX HEAD	6

**GROUP 02 ELECTRICAL AND CONTROL SYSTEM  
CONTROL BOX  
REPAIR PARTS LIST**

(1) ITEM NO.	(2) SMR CODE	(3) NSN	(4) CAGEC	(5) PART NUMBER	(6) DESCRIPTION AND USABLE ON CODE (UOC)	(7) QTY
					GROUP 02 ELECTRICAL AND CONTROL SYSTEM  FIG. 4 CONTROL BOX	
14	XDOZZ		94833	500K1950-1	WASHER,LOCK	10
15	PAOZZ	5925-01-486-3185	94833	500K1914-1	CIRCUIT BREAKER	1
16	PAOZZ	5355-00-151-6034	96906	MS91528-2T4B	KNOB	1
17	PAOZZ	5305-00-088-9670	96906	MS24693-C53	SCREW,MACHINE	4
18	XDOOO		94833	152K0128-1	THERMOSTAT ASSEMBLY	1
19	XDOZZ		94833	500K1927-2	NUT,SELF-LOCKING	2
20	XDOZZ		94833	500K1928-11	BOLT,HEX HEAD	2
21	PAOZZ	5305-00-719-5342	96906	MS51963-34	SETSCREW	1
22	XDOZZ		94833	152K0129	CAM,THERMOSTAT	1
23	PAOZZ	6685-01-483-2313	50831	A28GJ-30C	CONTROL,TEMPERATURE	1
24	PAOZZ	5930-01-483-2663	91929	1DM3	SWITCH,PUSH	1
25	XDOZZ		94833	152K0143-1	THERMOSTAT BRACKET	1
26	MOOZZ		94833	152K0117	GASKET MAKE FROM RUBBER GASKET, ASTM-D- 1056-2A2C2F2/0.125THK (0.75 X 3.94)	2
27	MOOZZ		94833	152K0116	GASKET MAKE FROM RUBBER GASKET, ASTM-D-1056-2A2C2F2, 0.125THK (0.50 X10.25)	2

**GROUP 02 ELECTRICAL AND CONTROL SYSTEM  
CONTROL BOX  
REPAIR PARTS LIST**

(1) ITEM NO.	(2) SMR CODE	(3) NSN	(4) CAGEC	(5) PART NUMBER	(6) DESCRIPTION AND USABLE ON CODE (UOC)	(7) QTY
					GROUP 02 ELECTRICAL AND CONTROL SYSTEM	
					FIG. 4 CONTROL BOX	
28	XDOZZ		94833	152K0018	COVER,CIRCUIT BREAK	1
29	PAOZA	5920-00-281-0225	71400	MTH6	FUSE,CARTRIDGE	2
30	PAOZZ	5305-00-717-5593	96906	MS24693-C30	SCREW,MACHINE	4
31	PBOZZ	5920-01-366-0796	71400	S-8301-2	FUSEHOLDER,BLOCK	1
32	PAOZZ	5999-01-420-4737	27192	H2013B-3	HEATER,THERMAL RELEASE	3
33	XDOZZ		94833	53575-10-8	SCREW,MACHINE	1
34	XDOZZ		94833	500K1928-19	BOLT,HEX HEAD	8
35	XDOZZ		94833	500K1950-3	WASHER,LOCK	9
36	XDOZZ		94833	500K1926-3	WASHER,FLAT	9
37	PAOZA	6110-01-483-2607	27192	AN16DNY8EB	STARTER,MOTOR	1
38	PAOZZ	5999-01-483-3650	27192	C320KG1	CONTACT,ELECTRICAL	1
39	PAOZA	6110-01-484-4674	94833	152K0189-1	CONTACTOR,MAGNETIC	2
40	XDOZZ		94833	500K1926-1	WASHER,FLAT	4
41	MOOZZ		94833	152K0009-1/54	INSULATION,SLEEVING MAKE FROM INSULATION,SLEEVING, M23053/5-107-9, 0.88 IN LG	5
42	PAOZZ	5940-01-063-9908	00779	61045-2	TERMINAL,QUICK DISCONNECT	5
43	PAOZZ	5945-01-485-1175	94833	500K1904-1	RELAY,ELECTROMAGNET	2

**GROUP 02 ELECTRICAL AND CONTROL SYSTEM  
CONTROL BOX  
REPAIR PARTS LIST**

(1) ITEM NO.	(2) SMR CODE	(3) NSN	(4) CAGEC	(5) PART NUMBER	(6) DESCRIPTION AND USABLE ON CODE (UOC)	(7) QTY
GROUP 02 ELECTRICAL AND CONTROL SYSTEM  FIG. 4 CONTROL BOX						
44	PAOZZ	6645-01-484-9671	1HM04	TDF-220-AKB-24H	TIMER,SEQUENTIAL	1
45	PBOZZ	5935-01-484-7746	51107	QC-11	SOCKET,PLUG-IN ELECTRICAL	1
46	XDOZZ		94833	500K1927-2	NUT,SELF-LOCKING	2
47	AOOOO		94833	150K0201-1	STRAP,GROUND	1
48	PAOZZ	5940-00-114-1316	56501	E10261	TERMINAL,LUG	2
49	MOOZZ		94833	150K0201-1/3	INSULATION,SLEEVING MAKE FROM INSULATION,SLEEVING, M23053/5-107-0, 4.00 IN. LG	1
50	MOOZZ		94833	150K0201-1/1	BRAID,WIRE,TUBULAR MAKE FROM BRAID,WIRE, QQB575R30T281, 4.00 IN LG	1
51	PAOZZ	5940-00-983-6122	81349	39TB2	TERMINAL BOARD	1
52	PAOZZ	5325-00-174-5316	96906	MS35489-2	GROMMET,NONMETALLIC	1
53	XDOZZ		57958	5054520-3	LOCKNUT,CONDUIT	1
54	XDOZZ		57958	5054519-9	BUSHING,STRAIN RELIEF	3
55	XBOOO		94833	152K0017-1	.CONTROL BOX WELDMENT	1
56	PAOZZ	5310-01-167-2415	96906	MS27130-CR19K	NUT,PLAIN,BLIND RIVET	9
57	PAOZA	5310-00-121-8009	80205	NAS1329C06KB75	NUT,PLAIN,BLIND RIVET	6
END OF FIGURE						



THIS PAGE INTENTIONALLY LEFT BLANK

UNIT AND DIRECT SUPPORT MAINTENANCE  
REFRIGERATION UNIT, MECHANICAL, 9K BTU, ELECTRIC  
MODEL F9000RE

DOOR SWITCHES AND ELECTRICAL (POWER) CORD CONNECTOR

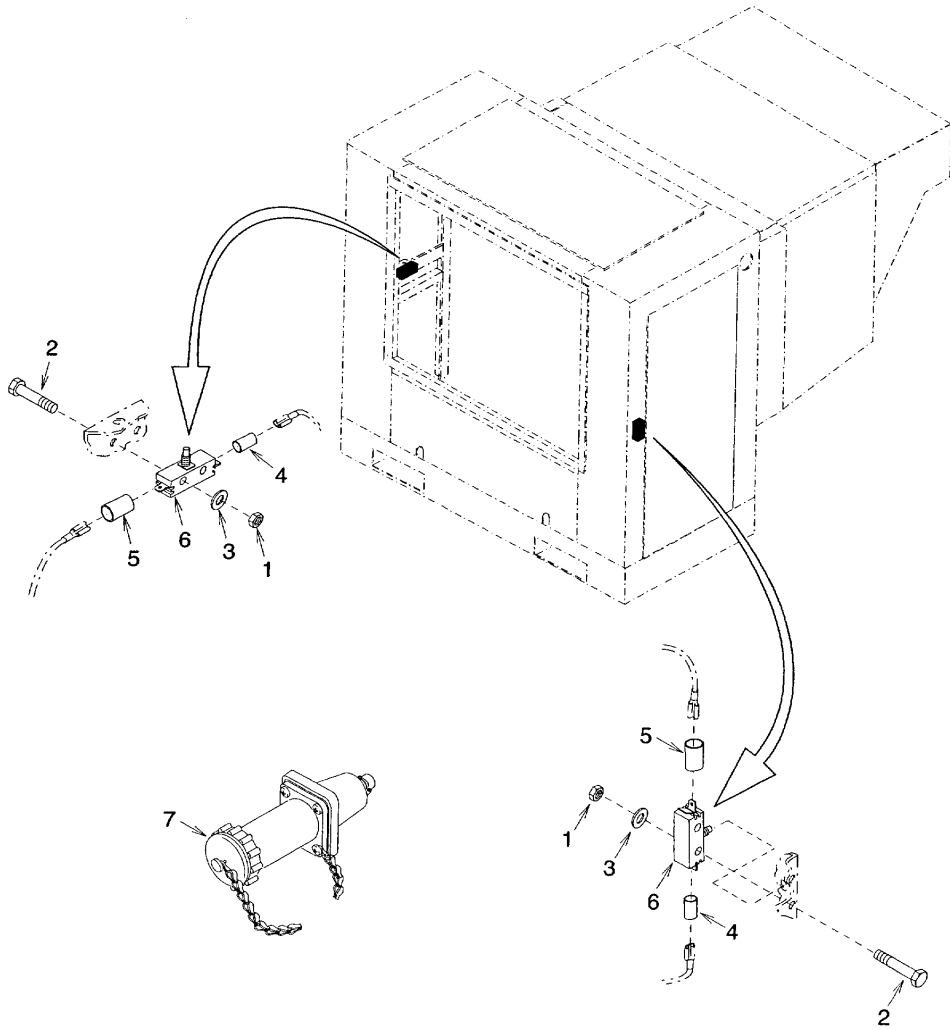


Figure 5. Door Switches and Electrical (Power) Cord Connector

**GROUP 02 ELECTRICAL AND CONTROL SYSTEM  
DOOR SWITCHES AND ELECTRICAL (POWER) CORD CONNECTOR  
REPAIR PARTS LIST**

(1) ITEM NO.	(2) SMR CODE	(3) NSN	(4) CAGEC	(5) PART NUMBER	(6) DESCRIPTION AND USABLE ON CODE (UOC)	(7) QTY
					GROUP 02 ELECTRICAL AND CONTROL SYSTEM	
					FIG. 5 DOOR SWITCHES AND ELECTRICAL (POWER) CORD CONNECTOR	
1	XDOZZ		94833	500K1927-1	NUT,SELF-LOCKING	4
2	XDOZZ		94833	500K1928-8	BOLT,HEX HEAD	4
3	XDOZZ		94833	500K1926-1	WASHER,FLAT	4
4	MOOZZ		94833	152K0000-1/191	INSULATION,SLEEVING MAKE FROM INSULATION,SLEEVING, FIT221 1/4WHITE, 1.50 IN. LG	2
5	MOOZZ		94833	152K0000-1/192	INSULATION,SLEEVING MAKE FROM INSULATION,SLEEVING, M23053/5-107-9. 1.50 IN LG	2
6	PAOZZ	5930-00-126-3132	01963	E13-00M	SWITCH,SENSITIVE	2
7	PAOZZ	5935-01-483-9137	03ZL1	HLC-6032-3C	CONNECTOR,PLUG, ELECTRICAL ISO TYPE	1

THIS PAGE INTENTIONALLY LEFT BLANK

THIS PAGE INTENTIONALLY LEFT BLANK

**UNIT AND DIRECT SUPPORT MAINTENANCE**  
**REFRIGERATION UNIT, MECHANICAL, 9K BTU, ELECTRIC**  
**MODEL F9000RE**  
**POWER TRANSMISSION AND AIR HANDLING**

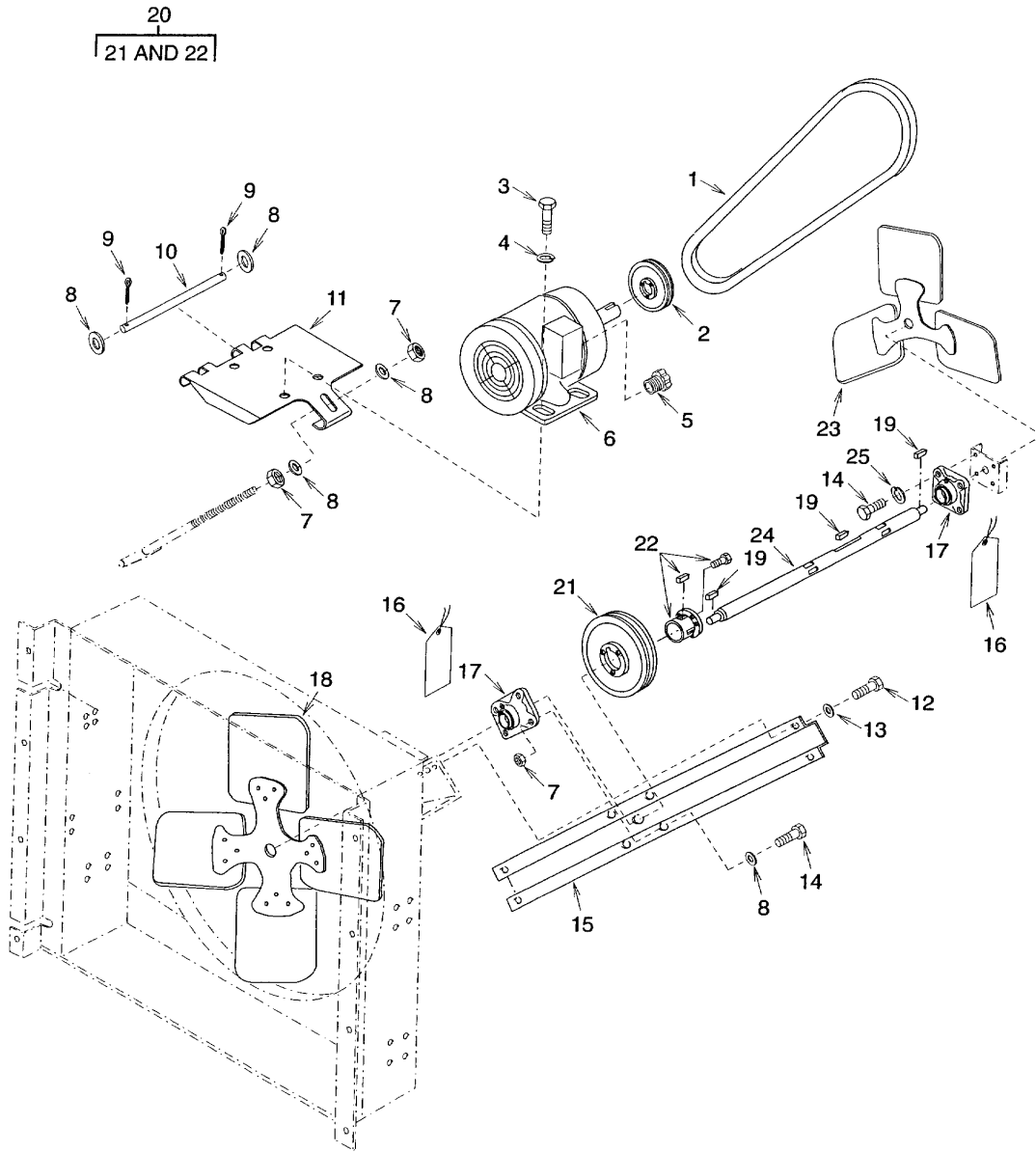


Figure 6. Power Transmission and Air Handling

**GROUP 03 POWER TRANSMISSION/AIR HANDLING  
POWER TRANSMISSION AND AIR HANDLING  
REPAIR PARTS LIST**

(1) ITEM NO.	(2) SMR CODE	(3) NSN	(4) CAGEC	(5) PART NUMBER	(6) DESCRIPTION AND USABLE ON CODE (UOC)	(7) QTY
					GROUP 03 POWER TRANSMISSION/AIR HANDLING	
					FIG. 6 POWER TRANSMISSION AND AIR HANDLING	
1	PAOZZ	3030-00-826-5151	71176	A50	BELT,V	1
2	PBOZZ	3020-01-485-0024	71176	BK34	PULLEY,GROOVE 0.625 BORE	1
3	XDOZZ		94833	500K1928-45	BOLT,HEX HEAD	4
4	XDOZZ		94833	500K1950-5	WASHER,LOCK	4
5	PAOZZ	5975-00-152-1144	59730	3302M	BOX CONNECTOR,ELECTRICAL	1
6	PAOZZ	6105-01-486-3494	94833	500K1861-3	MOTOR,ALTERNATING CURRENT	1
7	XDOZZ		94833	500K1927-6	NUT,SELF-LOCKING	6
8	XDOZZ		94833	500K1926-6	WASHER,FLAT	8
9	PAOZZ	5315-00-839-5821	96906	MS24665-351	PIN,COTTER	2
10	XDOZZ		94833	152K0100	HINGE PIN,MOTOR MOUNT	1
11	XBOZZ		94833	152K0133-1	PLATE ASSEMBLY, TOP,	1
12	XDOZZ		94833	500K1928-30	BOLT,HEX HEAD	4
13	XDOZZ		94833	500K1926-4	WASHER,FLAT	4
14	XDOZZ		94833	500K1928-59	BOLT,HEX HEAD	8
15	XBOZZ		94833	152K0063	CHANNEL,BEARING,FRONT	1
16	XDOZZ		94833	149K0056	TAG,LUBRICATION	2
17	PAOZZ	3130-01-485-1737	94833	500K1866	BEARING UNIT,BALL	2
18	PAOZA	4140-01-484-0644	94833	500K1864-2	IMPELLER,FAN,CENTRIFUGAL	1

**GROUP 03 POWER TRANSMISSION/AIR HANDLING  
POWER TRANSMISSION AND AIR HANDLING  
REPAIR PARTS LIST**

(1) ITEM NO.	(2) SMR CODE	(3) NSN	(4) CAGEC	(5) PART NUMBER	(6) DESCRIPTION AND USABLE ON CODE (UOC)	(7) QTY
					GROUP 03 POWER TRANSMISSION/AIR HANDLING  FIG. 6 POWER TRANSMISSION AND AIR HANDLING	
19	PAOZZ	5315-00-995-0569	96906	MS20066-213	KEY,MACHINE	2
20	PBOOZ	3020-01-485-0468	94833	500K1955	PULLEY,GROOVE	1
21	XAOZZ		71176	ITA44	SHEAVE,TWO GROOVE	1
22	XAOZZ		71176	P1	BUSHING,SPLIT TAPER	1
23	PAOZA	4140-01-484-0649	94833	500K1865-3	IMPELLER,FAN,CENTRIFUGAL	1
24	PBOZZ	3040-01-483-8105	94833	152K0022	SHAFT,SHOULDERED	1
25	XDOZZ		94833	500K1950-6	WASHER,LOCK	4



THIS PAGE INTENTIONALLY LEFT BLANK

UNIT AND DIRECT SUPPORT MAINTENANCE  
REFRIGERATION UNIT, MECHANICAL, 9K BTU, ELECTRIC  
MODEL F9000RE  
REFRIGERANT PIPING, CONDENSER SECTION

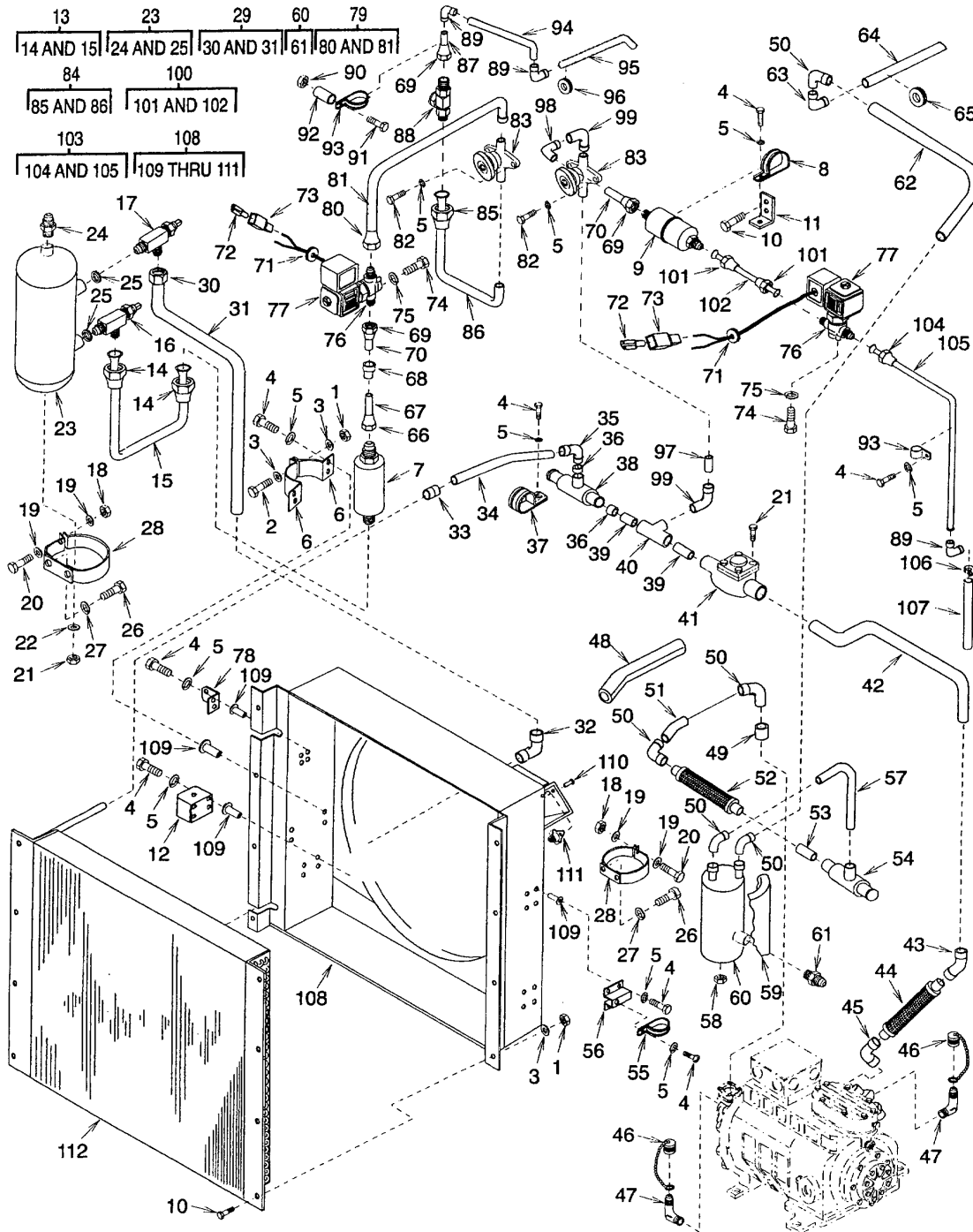


Figure 7. Refrigerant Piping, Condenser Section

**GROUP 04 REFRIGERATION SYSTEM  
REFRIGERANT PIPING, CONDENSER SECTION  
REPAIR PARTS LIST**

(1) ITEM NO.	(2) SMR CODE	(3) NSN	(4) CAGEC	(5) PART NUMBER	(6) DESCRIPTION AND USABLE ON CODE (UOC)	(7) QTY
					GROUP 04 REFRIGERATION SYSTEM	
					FIG. 7 REFRIGERANT PIPING, CONDENSER SECTION	
1	XDFZZ		94833	500K1927-4	NUT,SELF-LOCKING	11
2	XDFZZ		94833	500K1928-33	BOLT,HEX HEAD	1
3	XDFZZ		94833	500K1926-4	WASHER,FLAT	10
4	XDFZZ		94833	500K1928-21	BOLT,HEX HEAD	24
5	XDFZZ		94833	500K1950-3	WASHER,LOCK	28
6	XDFZZ		94833	152K0157	CLAMP,FILTER DRIER	2
7	PAFZZ	4130-00-922-7083	96906	MS35845-3	FILTER-DRIER,REFRIGERANT	1
8	PAFZZ	5340-00-579-9678	96906	MS21919WDG32	CLAMP,LOOP	1
9	PAFZZ	4730-01-485-0721	97765	FC 6	STRAINER,SEDIMENT	1
10	XDFZZ		94833	500K1928-30	BOLT,HEX HEAD	10
11	XDFZZ		94833	152K0168-1	BRACKET,STRAINER	1
12	XBFZZ		94833	152K0156	BASE SUPPORT,FILTER DRIER	1
13	MFFFF		94833	152K0205-1	TUBE ASSEMBLY OUTLET RECEIVER TO DEHYDRATOR	1
14	PAFZZ	4730-00-228-0826	96906	MS35872-4	NUT,TUBE COUPLING	2
15	MFFZZ		94833	152K0205-1/T	TUBE, COPPER MAKE FROM COPPER TUBING,ASTM-B280, 0.500 OD X 0.032 WALL, 12.83 IN LG.	2

**GROUP 04 REFRIGERATION SYSTEM  
REFRIGERANT PIPING, CONDENSER SECTION  
REPAIR PARTS LIST**

(1) ITEM NO.	(2) SMR CODE	(3) NSN	(4) CAGEC	(5) PART NUMBER	(6) DESCRIPTION AND USABLE ON CODE (UOC)	(7) QTY
					GROUP 04 REFRIGERATION SYSTEM	
					FIG. 7 REFRIGERANT PIPING, CONDENSOR SECTION	
16	PBFZZ	4820-01-485-0530	97765	27035	VALVE,FLOW CONTROL	1
17	PBFZZ	4820-01-485-0527	97765	27036	VALVE,FLOW CONTROL	1
18	XDFZZ		94833	500K1927-5	NUT,SELF LOCKING	4
19	XDFZZ		94833	500K1926-5	WASHER,FLAT	8
20	XDFZZ		94833	500K1928-46	BOLT,HEX HEAD	4
21	XDFZZ		94833	500K1927-6	NUT,SELF LOCKING	1
22	XDFZZ		94833	500K1926-6	WASHER, FLAT	1
23	XBFZZ		97765	3391	RECEIVER,LIQUID REFRIGERANT	1
24	PBFZZ	5340-01-485-0689	97765	983-430	PLUG,FUSIBLE	1
25	PBFZZ	5330-01-333-8101	97765	24591	O-RING	2
26	XDFZZ		94833	500K1928-44	BOLT,HEX HEAD	8
27	XDFZZ		94833	500K1950-5	WASHER,LOCK	8
28	XBFZZ		94833	152K0138-1	BRACKET,CLAMP (RECEIVER/ACCUMULATOR)	4
29	MFFFF		94833	152K0171-1	TUBE ASSEMBLY,OUTLET, CONDENSER, COIL	1
30	PAFZZ	4730-00-189-2742	96906	MS35872-5	NUT,TUBE COUPLING	1

**GROUP 04 REFRIGERATION SYSTEM  
REFRIGERANT PIPING, CONDENSER SECTION  
REPAIR PARTS LIST**

(1) ITEM NO.	(2) SMR CODE	(3) NSN	(4) CAGEC	(5) PART NUMBER	(6) DESCRIPTION AND USABLE ON CODE (UOC)	(7) QTY
					GROUP 04 REFRIGERATION SYSTEM	
					FIG. 7 REFRIGERANT PIPING, CONDENSER SECTION	
31	MFFZZ		94833	152K0171-1/1	TUBE,COPPER MAKE FROM COPPER TUBING,ASTM-B280, 0.625 OD X 0.035 WALL, 29.77 IN. LG.	1
32	PAFZZ	4730-00-254-6450	41947	W-2022	ELBOW,TUBE	1
33	PAFZZ	4730-00-264-9157	96906	MS35927-7	COUPLING,TUBE	1
34	MFFZZ		94833	152K0178	TUBE,OUTLET, DISCHARGE PRESSURE REGULATOR VALVE, MAKE FROM COPPER TUBING ASTM-B280, 0.875 OD X 0.045 WALL, 7.00 IN LG	1
35	XDFZZ		41947	WC-2334	ELBOW,90 DEGREE	1
36	PAFZZ	4730-00-013-8707	41947	W-1737	REDUCER,TUBE	2
37	PAFZZ	5340-00-598-0529	96906	MS21919WDG28	CLAMP,LOOP	1
38	PBFZZ	4820-01-486-4858	70255	IPR-10-7/8 ODF- 65/225	VALVE,REGULATING, FLUID PRESSURE	1
39	MFFZZ		94833	12075-9-1875	TUBE,COPPER MAKE FROM COPPER TUBING ASTM-B280, 0.875 OD X 0.045 WALL, 1.88 IN LG	2
40	PAFZZ	4730-00-814-8519	41947	W-4035	TEE,TUBE SOLDER X SOLDER X SOLDER	1

**GROUP 04 REFRIGERATION SYSTEM  
REFRIGERANT PIPING, CONDENSER SECTION  
REPAIR PARTS LIST**

(1) ITEM NO.	(2) SMR CODE	(3) NSN	(4) CAGEC	(5) PART NUMBER	(6) DESCRIPTION AND USABLE ON CODE (UOC)	(7) QTY
					GROUP 04 REFRIGERATION SYSTEM	
					FIG. 7 REFRIGERANT PIPING, CONDENSOR SECTION	
41	PBFZZ	4820-01-484-6873	96906	MS17810-4	VALVE,CHECK	1
42	MFFZZ		94833	152K0177	TUBE,OUTLET, VIBRATION ISOLATOR (DISCHARGE LINE) MAKE FROM COPPER TUBING ASTM-B280, 0.875 OD X 0.045 WALL, 24.40 IN LG	1
43	PAFZZ	4730-00-813-3721	96906	MS35928-7U	ELBOW,TUBE	1
44	PAFZZ	4720-00-116-7493	02795	12MBS-4141B-111/  2 IN	HOSE ASSEMBLY,METAL	1
45	PAFZZ	4730-00-818-7484	80204	B16.22	ELBOW,TUBE FITTING X FITTING	1
46	PAFZZ	4730-01-092-3835	07295	40570	CAP,TUBE	2
47	PAFZZ	4730-00-254-6211	54214	MS39162-3	ELBOW,PIPE TO TUBE	2
48	MFFZZ		94833	152K0000-1/57	INSULATION MAKE FROM INSULATION TUBING M15280, FORM T 1-1/8 ID X 1/2 WALL, 48 IN LG	1
49	PAFZZ	4730-00-809-9680	41947	W1743	REDUCER,TUBE	1
50	PAFZZ	4730-00-235-4066	41947	W-2344	ELBOW,TUBE	5

**GROUP 04 REFRIGERATION SYSTEM  
REFRIGERANT PIPING, CONDENSER SECTION  
REPAIR PARTS LIST**

(1) ITEM NO.	(2) SMR CODE	(3) NSN	(4) CAGEC	(5) PART NUMBER	(6) DESCRIPTION AND USABLE ON CODE (UOC)	(7) QTY
					GROUP 04 REFRIGERATION SYSTEM	
					FIG. 7 REFRIGERANT PIPING, CONDENSER SECTION	
51	MFFZZ		94833	152K0176	TUBE,OUTLET, VIBRATION ISOLATOR (SUCTION LINE) MAKE FROM COPPER TUBING ASTM-B280, 1.125 OD X 0.050 WALL, 5.64 IN LG	1
52	PAFZZ	5340-01-471-4306	70510	1010FY	MOUNT,RESILIENT,GENERAL PURPOSE REFRIGERATION HOSE ASSEMBLY	1
53	MFFZZ		94833	12075-10-2000	TUBE,COPPER MAKE FROM COPPER TUBING ASTM-B280, 1.125 OD X 0.050 WALL, 2.00 IN. LG.	1
54	PAFFZ	4820-01-192-5887	70255	OPR-10 1.1250DF 0-60PSI	VALVE,REGULATING, FLUID REGULATOR	1
55	PAFZZ	5340-00-200-7449	96906	MS21919WDG18	CLAMP,LOOP	2
56	XDFZZ		94833	152K0181-1	BRACKET ASSEMBLY, ACCUMULATOR DISCHARGE TUBE	2
57	MFFZZ		94833	152K0175	TUBE,COPPER OUTLET ACCUMULATOR. MAKE FROM COPPER TUBING, ASTM-B280 1.125 OD X 0.050 WALL, 29.75 IN LG	1

**GROUP 04 REFRIGERATION SYSTEM  
REFRIGERANT PIPING, CONDENSER SECTION  
REPAIR PARTS LIST**

(1) ITEM NO.	(2) SMR CODE	(3) NSN	(4) CAGEC	(5) PART NUMBER	(6) DESCRIPTION AND USABLE ON CODE (UOC)	(7) QTY
					GROUP 04 REFRIGERATION SYSTEM	
					FIG. 7 REFRIGERANT PIPING, CONDENSOR SECTION	
58	XDFZZ		94833	500K1927-8	NUT,SELF-LOCKING	1
59	MFFZZ		94833	152K0000-1/172	INSULATION, SOUND AND TEMPERATURE. MAKE FROM (97403)13225E8562, 3 SQ FT	1
60	PBFZZ	4130-01-394-7836	97765	3700	ACCUMULATOR,REFRIGERANT	1
61	PBFZZ	5340-01-485-0689	97765	983-430	PLUG,FUSIBLE	1
62	MFFZZ		94833	152K0174	TUBE,COPPER, HEAT EXCHANGER MAKE FROM COPPER TUBING, ASTM-B280, 1.125 OD X 0.050 WALL, 37.25 IN LG..	1
63	PAFZZ	4730-00-995-2651	88216	A1557	ELBOW,TUBE SOLDER X SOLDER	1
64	MFFZZ		94833	12075-10-8938	TUBE,COPPER MAKE FROM COPPER TUBING, ASTM-B280, 1.125 OD X 0.050 WALL, 9.00 IN LG.	1
65	PAFZZ	5325-00-938-6702	96906	MS35489-55	GROMMET,NONMETALLIC	1
66	PAFZZ	4730-00-228-0826	96906	MS35872-4	NUT,TUBE COUPLING	1
67	MFFZZ		94833	12076-6-1000	TUBE,COPPER MAKE FROM COPPER TUBING, ASTM-B280, 0.500 OD X 0.032 WALL, 1.00 IN. LG.	1
68	XDFZZ		41947	W-1019N	COUPLING,REDUCER	1



**GROUP 04 REFRIGERATION SYSTEM  
REFRIGERANT PIPING, CONDENSER SECTION  
REPAIR PARTS LIST**

(1) ITEM NO.	(2) SMR CODE	(3) NSN	(4) CAGEC	(5) PART NUMBER	(6) DESCRIPTION AND USABLE ON CODE (UOC)	(7) QTY
					GROUP 04 REFRIGERATION SYSTEM	
					FIG. 7 REFRIGERANT PIPING, CONDENSER SECTION	
69	PAFZZ	4730-00-189-2739	81343	6 010166(NS4)	NUT,TUBE COUPLING	4
70	MFFZZ		94833	12076-5-1250	TUBE,COPPER MAKE FROM COPPER TUBING, ASTM-B280, 0.375 OD X 0.032 WALL, 1.25 IN. LG.	2
71	PAFZZ	5325-00-834-1789	96906	MS35489-118	GROMMET,NONMETALLIC	2
72	PAFZZ	5940-01-091-2560	00779	42565-2	TERMINAL	4
73	PAFZZ	5970-00-494-8284	00779	480053-3	INSULATOR,HOUSING	4
74	XDFZZ		94833	500K1928-11	BOLT,HEX HEAD	4
75	XDFZZ		94833	500K1950-2	WASHER,LOCK	4
76	PAFZZ	4810-01-147-6802	78462	B9F2	VALVE,SOLENOID	2
77	PAFZZ	4810-00-928-8927	78462	MKC-2	PARTS KIT,SOLENOID	1
78	XBFZZ		94833	152K0155	BRACKET,SOLENOID VALVE, LIQUID LINE	1
79	MFFFF		94833	152K0172-1	TUBE ASSEMBLY,OUTLET, SOLENOID VALVE (LIQUID LINE)	1
80	PAFZZ	4730-00-189-2739	96906	MS35872-3	NUT,TUBE COUPLING	2
81	MFFZZ		94833	152K0172-1/1	TUBE,COPPER MAKE FROM COPPER TUBING, ASTM-B280, 0.375 OD X 0.032 WALL, 20.63 IN LG.	1

**GROUP 04 REFRIGERATION SYSTEM  
REFRIGERANT PIPING, CONDENSER SECTION  
REPAIR PARTS LIST**

(1) ITEM NO.	(2) SMR CODE	(3) NSN	(4) CAGEC	(5) PART NUMBER	(6) DESCRIPTION AND USABLE ON CODE (UOC)	(7) QTY
					GROUP 04 REFRIGERATION SYSTEM	
					FIG. 7 REFRIGERANT PIPING, CONDENSOR SECTION	
82	XDFZZ		94833	500K1928-19	BOLT,HEX HEAD	4
83	PAFZZ	4820-00-287-3325	28193	6263N	VALVE,GLOBE	2
84	MFFFF		94833	152K0180-1	TUBE ASSEMBLY,OUTLET,HAND VALVE TO SIGHT GLASS	1
85	PAFZZ	4730-00-189-2739	96906	MS35872-3	NUT,TUBE COUPLING	1
86	MFFZZ		94833	152K0180-1/T	TUBE,COPPER MAKE FROM COPPER TUBING, ASTM-B280, 0.375 OD X 0.032 WALL, 7.08 IN. LG.	1
87	MFFZZ		94833	12076-5-1813	TUBE,COPPER MAKE FROM COPPER TUBING, ASTM-B280, 0.375 OD X 0.032 WALL, 1.81 IN. LG.	2
88	PAFZZ	6680-00-426-8643	70255	AMI1MM3	INDICATOR,SIGHT,LIQUID	1
89	PAFZZ	4730-01-397-1195	41947	W-2009	ELBOW,TUBE	3
90	XDFZZ		94833	500K1927-3	NUT,SELF-LOCKING	1
91	XDFZZ		94833	500K1928-24	BOLT,HEX HEAD	1
92	XDFZZ		94833	149K0055-3	SPACER	1
93	PAFZZ	5340-01-148-3722	96906	MS21919WCG6	CLAMP,LOOP	3

**GROUP 04 REFRIGERATION SYSTEM  
REFRIGERANT PIPING, CONDENSER SECTION  
REPAIR PARTS LIST**

(1) ITEM NO.	(2) SMR CODE	(3) NSN	(4) CAGEC	(5) PART NUMBER	(6) DESCRIPTION AND USABLE ON CODE (UOC)	(7) QTY
					GROUP 04 REFRIGERATION SYSTEM	
					FIG. 7 REFRIGERANT PIPING, CONDENSER SECTION	
94	MFFZZ		94833	152K0173	TUBE,COPPER OUTLET, SIGHT GLASS. MAKE FROM COPPER TUBING, ASTM-B280, 0.375 OD X 0.032 WALL, 10.36 IN. LG.	1
95	MFFZZ		94833	152K0192	TUBE,COPPER HEAT EXCHANGER TO ELBOW, MAKE FROM COPPER TUBING, ASTM-B280, 0.375 OD X 0.032 WALL, 9.53 IN LG.	1
96	PAFZZ	5325-00-185-0004	96906	MS35489-40	GROMMET, NONMETALLIC	1
97	MFFZZ		94833	12075-5-1625	TUBE,COPPER MAKE FROM COPPER TUBING, ASTM-B280, 0.375 OD X 0.032 WALL, 1.63 IN. LG.	1
98	XDFZZ		96906	MS35928-3U	ELBOW,TUBE	1
99	PAFZZ	4730-00-277-7922	41947	W-2312	ELBOW,TUBE	2
100	MFFFF		94833	152K0179-1	TUBE ASSEMBLY, OUTLET, STRAINER	1
101	PAFZZ	4730-00-189-2739	96906	MS35872-3	NUT,TUBE COUPLING	2
102	MFFZZ		94833	152K0179-1/1	TUBE,COPPER MAKE FROM COPPER TUBING,ASTM-B280, 0.375 OD X 0.032 WALL, 2.25 IN. LG.	1

**GROUP 04 REFRIGERATION SYSTEM  
REFRIGERANT PIPING, CONDENSER SECTION  
REPAIR PARTS LIST**

(1) ITEM NO.	(2) SMR CODE	(3) NSN	(4) CAGEC	(5) PART NUMBER	(6) DESCRIPTION AND USABLE ON CODE (UOC)	(7) QTY
					GROUP 04 REFRIGERATION SYSTEM	
					FIG. 7 REFRIGERANT PIPING, CONDENSOR SECTION	
103	MFFFF		94833	152K0182-1	TUBE ASSEMBLY, OUTLET, SOLENOID VALVE (DEFROST LINE)	1
104	PAFZZ	4730-00-189-2739	96906	MS35872-3	NUT,TUBE COUPLING	1
105	MFFZZ		94833	152K0182-1/T	TUBE,COPPER MAKE FROM COPPER TUBING, ASTM-B280, 0.375 OD X 0.032 WALL, 29.34 IN LG.	1
106	PAFZZ	4730-00-908-3195	96906	MS35842-10	CLAMP,HOSE LOW PRESSURE	1
107	MFFZZ		94833	152K0000-1/155	TUBING,TYGON MAKE FROM TYGON TUBING, ZZ-T-831, 0.375 ID X 0.063 WALL, 16 IN LG	1
108	XDFFF		94833	152K0045-1	WELDMENT,CONDENSER FAN SHROUD	1
109	PAFZZ	5310-01-324-7187	96906	MS27130-S127K	NUT,PLAIN,BLIND RIVET	18
110	PAFZZ	5320-01-282-7547	96906	MS20605-S3W3	RIVET,BLIND	8
111	PAFZZ	5310-00-728-5503	96906	MS21077-4	NUT,SELF-LOCKING,PLATE	4
112	PBFZA	4130-01-484-0761	0A400	980097 3CZ0602C	CONDENSER COIL,REFRIGERANT	1
END OF FIGURE						

THIS PAGE INTENTIONALLY LEFT BLANK

**UNIT AND DIRECT SUPPORT MAINTENANCE**  
**REFRIGERATION UNIT, MECHANICAL, 9K BTU, ELECTRIC**  
**MODEL F9000RE**  
**PRESSURE SWITCHES**

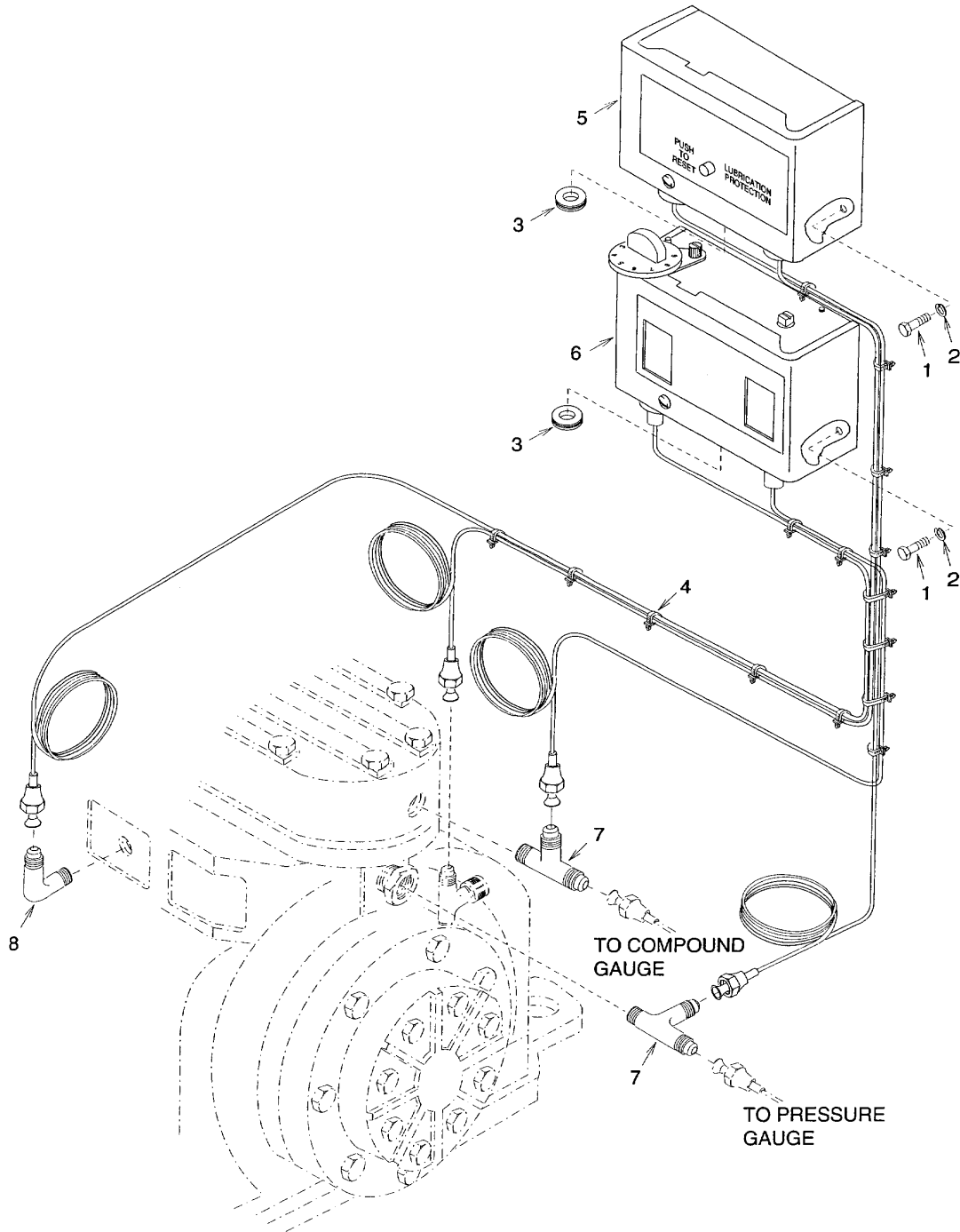


Figure 8. Pressure Switches

**GROUP 04 REFRIGERATION SYSTEM  
PRESSURE SWITCHES  
REPAIR PARTS LIST**

(1) ITEM NO.	(2) SMR CODE	(3) NSN	(4) CAGEC	(5) PART NUMBER	(6) DESCRIPTION AND USABLE ON CODE (UOC)	(7) QTY
					GROUP 04 REFRIGERATION SYSTEM	
					FIG. 8 PRESSURE SWITCHES	
1	XDFZZ		94833	500K1928-19	BOLT,HEX HEAD	4
2	XDFZZ		94833	500K1950-3	WASHER,LOCK	4
3	PAFZZ	5325-00-913-2606	81205	BACG20AF12D4	GROMMET,NONMETALLIC	2
4	PAFZZ	5975-00-156-3253	96906	MS3367-2-9	STRAP,TIEDOWN,ELECTRICAL	15
5	PAFZZ	4130-00-814-0450	50831	P45NCA-12	CONTROL,LUBE OIL PRESSURE	1
6	PAFZZ	5930-01-361-6333	92578	P70LB-1C	SWITCH,PRESSURE CONTROL	1
7	PAFZZ	4730-00-268-3697	41947	A127	TEE,PIPE TO TUBE	2
8	PAFZZ	4730-00-254-6211	30327	E14A	ELBOW,PIPE TO TUBE	1
END OF FIGURE						

THIS PAGE INTENTIONALLY LEFT BLANK



THIS PAGE INTENTIONALLY LEFT BLANK

UNIT AND DIRECT SUPPORT MAINTENANCE  
REFRIGERATION UNIT, MECHANICAL, 9K BTU, ELECTRIC  
MODEL F9000RE  
TEMPERATURE AND REFRIGERATION GAUGES

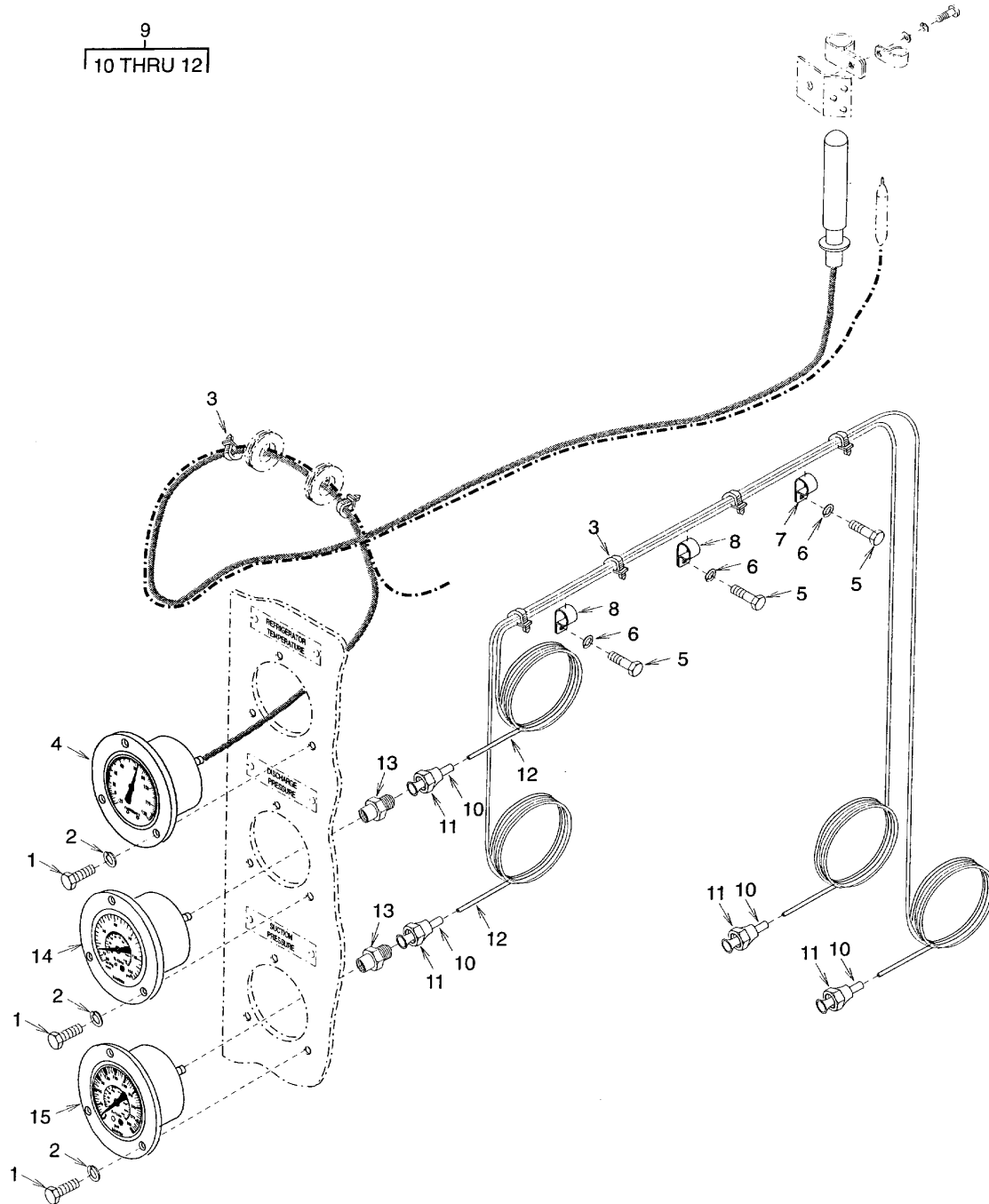


Figure 9. Temperature and Refrigeration Gauges

**GROUP 04 REFRIGERATION SYSTEM  
TEMPERATURE AND REFRIGERATION GAUGES  
REPAIR PARTS LIST**

(1) ITEM NO.	(2) SMR CODE	(3) NSN	(4) CAGEC	(5) PART NUMBER	(6) DESCRIPTION AND USABLE ON CODE (UOC)	(7) QTY
					GROUP 04 REFRIGERATION SYSTEM	
					FIG. 9 TEMPERATURE AND REFRIGERATION GAUGES	
1	XDFZZ		94833	500K1928-3	BOLT,HEX HEAD	9
2	XDFZZ		94833	500K1950-1	WASHER,LOCK	9
3	PAFZZ	5975-00-156-3253	96906	MS3367-2-9	STRAP,TIEDOWN,ELECTRICAL	10
4	PAFZZ	6685-00-987-5600	96906	MS27211-2	THERMOMETER,INDICATING, (REFRIGERATOR TEMPERATURE)	1
5	XDFZZ		94833	500K1928-21	BOLT,HEX HEAD	3
6	XDFZZ		94833	500K1950-3	WASHER,LOCK	3
7	PAFZZ	5340-01-148-3722	96906	MS21919WCG6	CLAMP,LOOP	1
8	PAFZZ	5340-00-291-5323	96906	MS21919WDG4	CLAMP,LOOP	2
9	MFFFF		94833	149K0051-3	TUBE ASSEMBLY,CAPILLARY (90 INCH).	2
10	MFFZZ		94833	12076-3-1000	TUBE,COPPER STRAIGHT,FLARED. MAKE FROM COPPER TUBING, ASTM-B280, 0.25 OD X 0.030 WALL , 1 IN LG	2
11	PAFZZ	4730-00-189-2737	96906	MS35872-2	NUT,TUBE COUPLING	2
12	MFFZZ		94833	149K0051-3/3	TUBE,COPPER STRAIGHT MAKE FROM COPPER TUBING, ASTM-B280, 0.125 OD X 0.030 WALL, 90 IN LG	1
13	PAFZZ	4730-00-090-0832	41947	A4622	ADAPTER,STRAIGHT,PIPE, RE X NPTF	2

**GROUP 04 REFRIGERATION SYSTEM  
TEMPERATURE AND REFRIGERATION GAUGES  
REPAIR PARTS LIST**

(1) ITEM NO.	(2) SMR CODE	(3) NSN	(4) CAGEC	(5) PART NUMBER	(6) DESCRIPTION AND USABLE ON CODE (UOC)	(7) QTY
					GROUP 04 REFRIGERATION SYSTEM	
					FIG. 9 TEMPERATURE AND REFRIGERATION GAUGES	
14	PAFZZ	6685-00-924-9434	61510	1085A27G02	GAUGE,PRESSURE,DIAL INDICATING (DISCHARGE PRESSURE)	1
15	PAFZZ	6685-00-948-0928	94833	500K1857-1C	GAUGE,COMPOUND PRESSURE (SUCTION PRESSURE)	1
END OF FIGURE						

THIS PAGE INTENTIONALLY LEFT BLANK

UNIT AND DIRECT SUPPORT MAINTENANCE  
REFRIGERATION UNIT, MECHANICAL, 9K BTU, ELECTRIC  
MODEL F9000RE  
EVAPORATOR ASSEMBLY

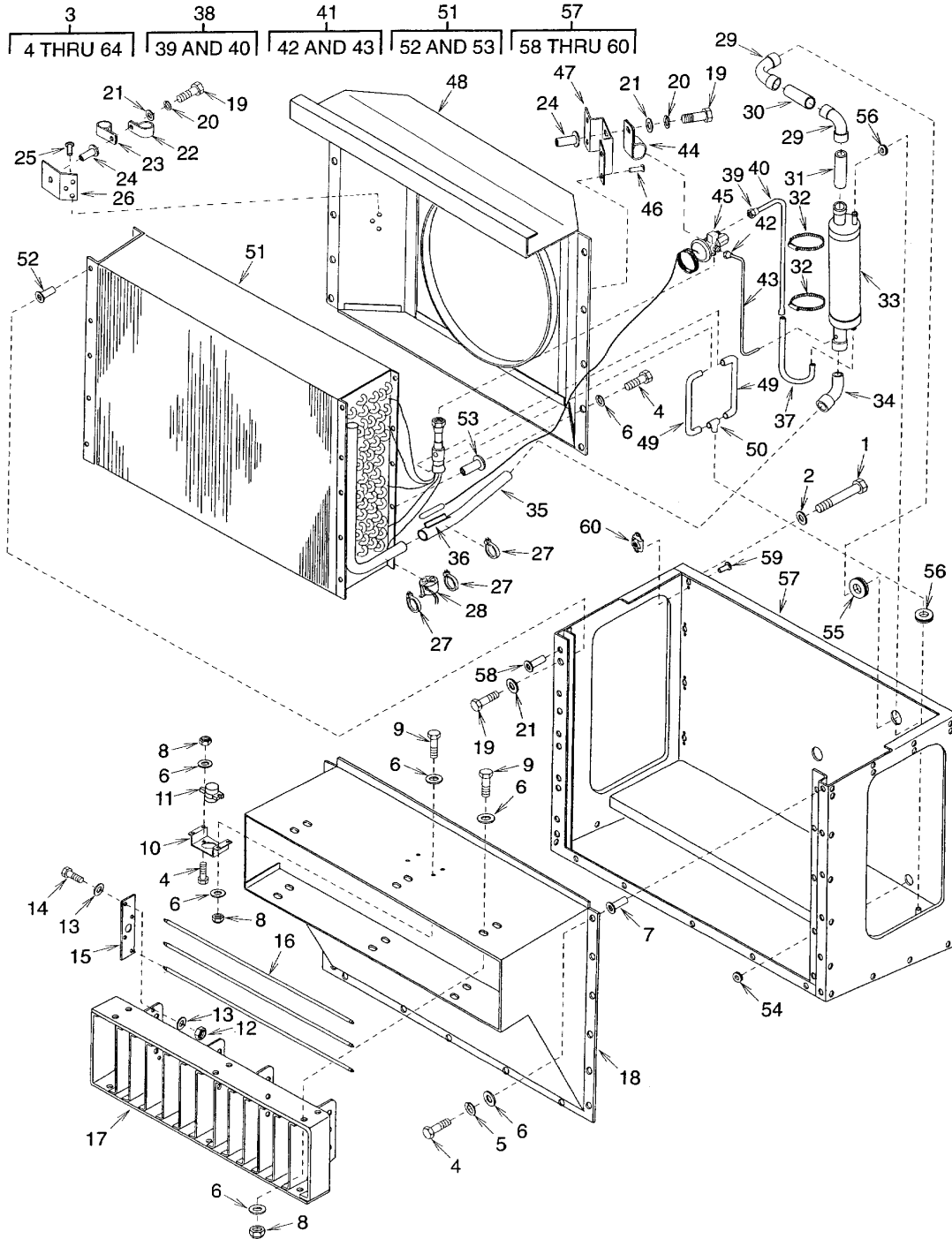


Figure 10. Evaporator Assembly

**GROUP 04 REFRIGERATION SYSTEM  
EVAPORATOR ASSEMBLY  
REPAIR PARTS LIST**

(1) ITEM NO.	(2) SMR CODE	(3) NSN	(4) CAGEC	(5) PART NUMBER	(6) DESCRIPTION AND USABLE ON CODE (UOC)	(7) QTY
					GROUP 04 REFRIGERATION SYSTEM	
					FIG. 10 EVAPORATOR ASSEMBLY	
1	PAFZZ	5305-00-269-4530	96906	MS90727-77	SCREW,CAP,HEXAGON HEAD	16
2	XDFZZ		94833	500K1926-6	WASHER,FLAT	16
3	XDFFF		94833	152K0023-1	EVAPORATOR SECTION ASSEMBLY	1
4	XDFZZ		94833	500K1928-14	BOLT,HEX HEAD	29
5	XDFZZ		94833	500K1950-2	WASHER,LOCK	17
6	XDFZZ		94833	500K1926-2	WASHER,FLAT	61
7	PAFZZ	5310-00-122-7281	80205	NAS1330C08KB106	NUT,PLAIN,BLIND RIVET	17
8	XDFZZ		94833	500K1927-2	NUT,SELF-LOCKING	18
9	XDFZZ		94833	500K1928-13	BOLT,HEX HEAD	16
10	XDFZZ		94833	152K0163	BRACKET,MOUNTING HEATER THERMOSTAT	1
11	PAFZZ	5930-00-498-5895	60532	CNT202	SWITCH,THERMOSTATIC	1
12	XDFZZ		94833	500K1927-1	NUT,SELF-LOCKING	4
13	XDFZZ		94833	500K1926-1	WASHER,FLAT	8
14	XDFZZ		94833	500K1928-5	BOLT,HEX HEAD	4
15	XDFZZ		94833	152K0111	KEEPER PLATE,HEATER	1
16	PAFZA	4520-01-483-9040	94833	500K1938-2	HEATING ELEMENT,ELECTRICAL	3
17	XBFZZ		94833	152K0113-1	HEATER FRAME ASSY	1
18	XBFZZ		94833	152K0034-1	SHROUD ASSEMBLY	1

**GROUP 04 REFRIGERATION SYSTEM  
EVAPORATOR ASSEMBLY  
REPAIR PARTS LIST**

(1) ITEM NO.	(2) SMR CODE	(3) NSN	(4) CAGEC	(5) PART NUMBER	(6) DESCRIPTION AND USABLE ON CODE (UOC)	(7) QTY
					GROUP 04 REFRIGERATION SYSTEM	
					FIG. 10 EVAPORATOR ASSEMBLY	
19	PAFZZ	5305-00-959-1909	96906	MS16996-11	SCREW,CAP,SOCKET HEAD	12
20	XDFZZ		94833	500K1950-3	WASHER,LOCK	2
21	XDFZZ		94833	500K1926-3	WASHER,FLAT	12
22	PAFZZ	5340-01-148-3722	96906	MS21919WCG6	CLAMP,LOOP	1
23	PAFZZ	5340-01-132-8740	96906	MS21919WCG7	CLAMP,LOOP	1
24	PAFZZ	5310-01-058-3350	96906	MS27130-CR20K	NUT,PLAIN,BLIND RIVET	2
25	PAFZZ	5320-00-616-4353	53551	RV250-6-2	RIVET,BLIND	3
26	XDFZZ		94833	152K0164	BRACKET,MOUNTING SENSING BULB	1
27	PAFZZ	5975-00-156-3253	96906	MS3367-2-9	STRAP,TIE DOWN,ELECTRICAL	3
28	PAFZZ	5930-01-211-3339	14859	20640L15-496-210	SWITCH,THERMOSTATIC	1
				L45-2.10		
29	PAFZZ	4730-00-995-2651	88216	A1557	ELBOW,TUBE	2
30	MFFZZ		94833	152K0190	TUBE,COPPER ELBOW TO ELBOW. MAKE FROM COPPER TUBING, ASTM-B280, 1.125 OD X 0.050 WALL, 3.25 IN. LG.	1



**GROUP 04 REFRIGERATION SYSTEM  
EVAPORATOR ASSEMBLY  
REPAIR PARTS LIST**

(1) ITEM NO.	(2) SMR CODE	(3) NSN	(4) CAGEC	(5) PART NUMBER	(6) DESCRIPTION AND USABLE ON CODE (UOC)	(7) QTY
					GROUP 04 REFRIGERATION SYSTEM	
					FIG. 10 EVAPORATOR ASSEMBLY	
31	MFFZZ		94833	152K0191	TUBE,COPPER ELBOW TO HEAT EXCHANGER, MAKE FROM COPPER TUBING, ASTM-B280, 1.125 OD X 0.050 WALL, 2.50 IN. LG.	1
32	PAFZZ	4730-00-908-6292	96906	MS35842-14	CLAMP,HOSE	2
33	PBFZZ	4130-01-485-0699	97765	H300	HEAT INTERCHANGER, REFRIGERANT	1
34	PAFZZ	4730-00-235-4066	41947	W-2344	ELBOW,TUBE	1
35	MFFZZ		94833	152K0193	TUBE, COPPER HEADER TO ELBOW. MAKE FROM COPPER TUBING, ASTM-B280, 1.125 OD X 0.050 WALL , 4.43 IN. LG..	1
36	MFFZZ		94833	152K0194	TUBE, COPPER, CONTACT CRADLE SENSING BULB. MAKE FROM COPPER TUBING, ASTM-B280, 0.50 OD X 0.032 WALL, 2.00 IN. LG.	1
37	MFFZZ		94833	152K0195	TUBE,COPPER HEAT EXCHANGER TO TUBE MAKE FROM COPPER TUBING, ASTM-B280, 0.375 OD X 0.032 WALL, 9.31 IN. LG.	1
38	AFFFF		94833	152K0196-1	SENSING BULB CRADLE VALVE	1
39	PAFZZ	4730-00-189-2737	96906	MS35872-2	NUT, TUBE COUPLING	1

**GROUP 04 REFRIGERATION SYSTEM  
EVAPORATOR ASSEMBLY  
REPAIR PARTS LIST**

(1) ITEM NO.	(2) SMR CODE	(3) NSN	(4) CAGEC	(5) PART NUMBER	(6) DESCRIPTION AND USABLE ON CODE (UOC)	(7) QTY
					GROUP 04 REFRIGERATION SYSTEM	
					FIG. 10 EVAPORATOR ASSEMBLY	
40	MFFZZ		94833	152K0196-1/2	TUBE,COPPER MAKE FROM COPPER TUBING,ASTM-B280, 0.375 OD X 0.032 WALL, 10.47 IN. LG.	1
41	MFFFF		94833	152K0197-1	TUBE,EQUALIZER LINE	1
42	PAFZZ	4730-00-228-0826	96906	MS35872-4	NUT,TUBE COUPLING	1
43	MFFZZ		94833	152K0197-1/2	TUBE,COPPER MAKE FROM COPPER TUBING, ASTM-B280, 0.25 OD X 0.030 WALL, 11.39 IN. LG.	1
44	PAFZZ	5340-01-143-9758	96906	MS21919WCG16	CLAMP,LOOP	1
45	PAFZZ	4820-01-485-8754	70255	AFAE-1-MC-3/8 X 1/2SAE	VALVE,EXPANSION	1
46	PAFZZ	5320-00-582-3298	53551	RV250-4-2	RIVET,BLIND	1
47	XDFZZ		94833	152K0146	BRACKET, MOUNTING EXPANSION VALVE	1
48	XDFZZ		94833	152K0039	SHROUD WELDMENT EVAPORATOR FAN	1
49	MFFZZ		94833	152K0198	TUBE,COPPER TEE TO DISTRIBUTOR. MAKE FROM COPPER TUBING, ASTM-B280, 0.375 OD X 0.032 WALL 7.94 IN. LG.	1

**GROUP 04 REFRIGERATION SYSTEM  
EVAPORATOR ASSEMBLY  
REPAIR PARTS LIST**

(1) ITEM NO.	(2) SMR CODE	(3) NSN	(4) CAGEC	(5) PART NUMBER	(6) DESCRIPTION AND USABLE ON CODE (UOC)	(7) QTY
					GROUP 04 REFRIGERATION SYSTEM	
					FIG. 10 EVAPORATOR ASSEMBLY	
50	PAFZZ	4730-00-263-6460	96906	MS35929-3	TEE,TUBE	1
51	PBFFZ	4130-01-486-2119	0SN36	983922 4CZ0706A	EVAPORATOR COIL, REFRIGERANT	1
52	XDFZZ		80205	NAS1329HO8K130L	NUT,BLIND RIVET	10
53	XDFZZ		80205	NAS1329H3K130L	NUT,SELF-LOCKING,	10
54	PAFZZ	5325-00-185-0004	96906	MS35489-40	GROMMET,NONMETALLIC	3
55	PAFZZ	5325-00-938-6702	96906	MS35489-55	GROMMET,NONMETALLIC	1
56	PAFZZ	5325-01-088-7468	91265	3134	GROMMET,NONMETALLIC	1
57	XDFFF		94833	152K0097-1	FRAME WELDMENT EVAPORATOR	1
58	PAFZZ	5310-01-146-9773	96906	MS27130-S94K	NUT,PLAIN,BLIND RIVET	57
59	PAFZZ	5320-00-411-9439	97403	13220E5213-3	RIVET,BLIND	32
60	PAFZZ	5310-00-728-5505	96906	MS21077-6	NUT,SELF-LOCKING,PLATE	16

THIS PAGE INTENTIONALLY LEFT BLANK

THIS PAGE INTENTIONALLY LEFT BLANK

UNIT AND DIRECT SUPPORT MAINTENANCE  
REFRIGERATION UNIT, MECHANICAL, 9K BTU, ELECTRIC  
MODEL F9000RE  
COMPRESSOR

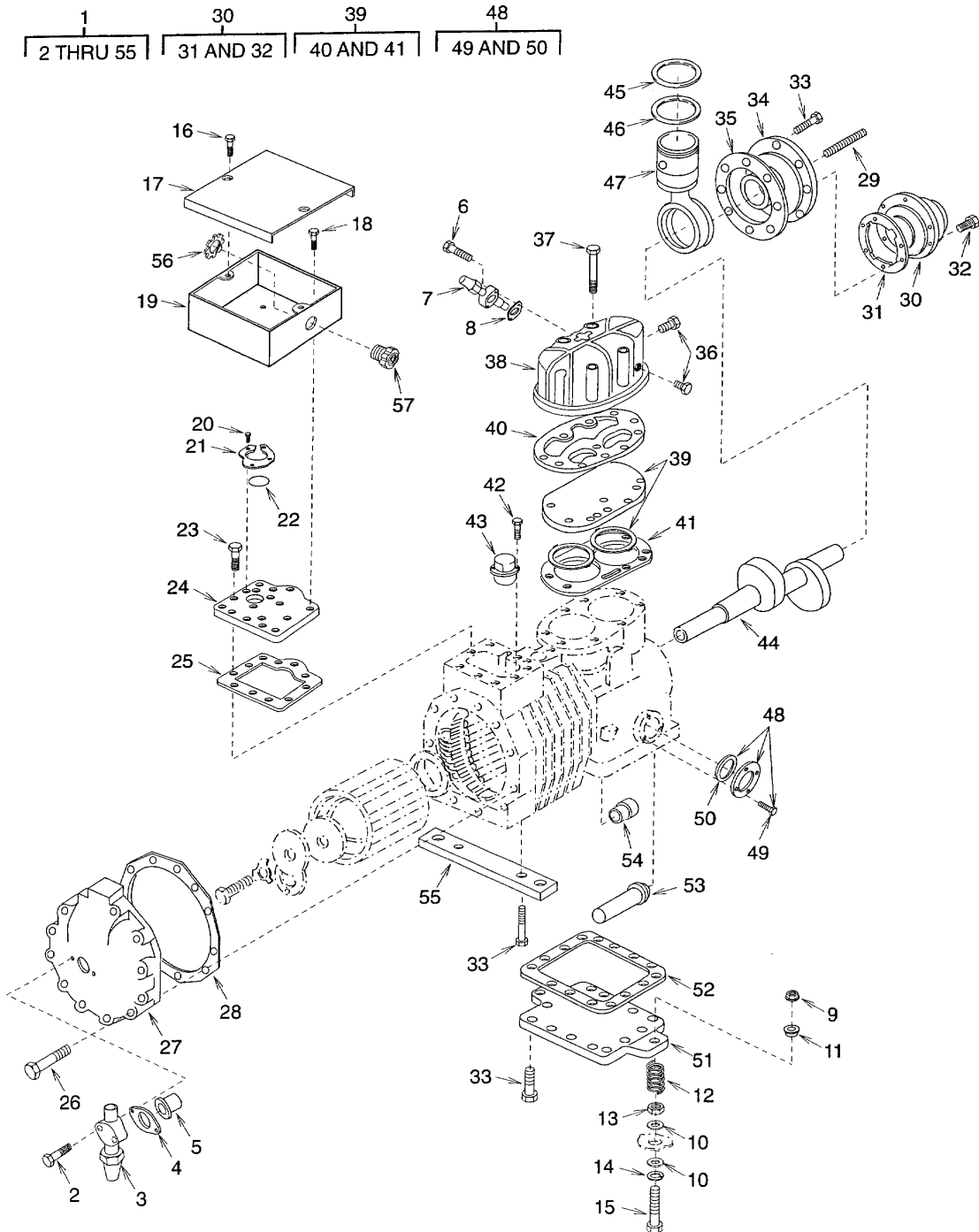


Figure 11. Compressor

**GROUP 04 REFRIGERATION SYSTEM  
COMPRESSOR  
REPAIR PARTS LIST**

(1) ITEM NO.	(2) SMR CODE	(3) NSN	(4) CAGEC	(5) PART NUMBER	(6) DESCRIPTION AND USABLE ON CODE (UOC)	(7) QTY
					GROUP 04 REFRIGERATION SYSTEM	
					FIG. 11 COMPRESSOR	
1	PAFFF	4130-01-486-2928	14569	2DA3-060E-TFC-800	COMPRESSOR UNIT, REFRIGERATION ,SEMI- HERMETIC	1
2	PAFZZ	5306-00-981-2573	14569	100-0013-19	BOLT	2
3	PAFZZ	4130-00-359-7060	14569	510-0068-00	VALVE,SHUTOFF	1
4	PAFZZ	5330-01-278-9526	14569	020-0012-11	GASKET	1
5	XDFZZ		14569	013-0078-00	SCREEN,SUCTION	1
6	PAFZZ	5306-00-449-5914	14569	100-0013-49	BOLT,MACHINE	2
7	PBFZZ	4820-01-485-1934	1DX67	510-0238-01	VALVE,FLOW CONTROL	1
8	PAFZZ	5330-00-369-3464	14569	020-0012-09	GASKET	1
9	XDFZZ		14569	101-0006-00	LOCKNUT	4
10	XDFZZ		94833	500K1926-8	WASHER,FLAT	8
11	PAFZZ	5365-01-485-0522	14569	027-0192-00	SPACER,SPECIAL SHAPE	4
12	XDFZZ		14569	006-0012-02	SPRING,MOUNTING	4
13	XDFZZ		14569	101-0002-12	NUT,HEXAGON	4
14	XDFZZ		14569	102-0010-11	WASHER,LOCK SPRING	4
15	XDFZZ		14569	100-0012-07	SCREW,HEX HEAD	4
16	XDFZZ		14569	100-0180-02	SCREW,HEX HEAD	2
17	XDFZZ		14569	505-0173-09	COVER TERMINAL ASSY	1

**GROUP 04 REFRIGERATION SYSTEM  
COMPRESSOR  
REPAIR PARTS LIST**

(1) ITEM NO.	(2) SMR CODE	(3) NSN	(4) CAGEC	(5) PART NUMBER	(6) DESCRIPTION AND USABLE ON CODE (UOC)	(7) QTY
					GROUP 04 REFRIGERATION SYSTEM	
					FIG. 11 COMPRESSOR	
18	PAFZZ	5305-00-450-1943	14569	100-0063-02	SCREW,ASSEMBLED WASHER	4
19	PBFZZ	5940-00-981-2568	14569	062-0058-00	TERMINAL BOX	1
20	PAFZZ	5305-00-981-2570	14569	100-0013-02	SCREW	3
21	PBFZZ	4130-00-981-2582	14569	521-0018-00	PLATE	1
22	PBFZZ	5331-01-484-7302	14569	020-0844-00	O-RING	1
23	XDFZZ		14569	100-0077-18	SCREW, HEX HEAD	10
24	XDFZZ		14569	503-0346-01	PLATE,TERMINAL GROUND	1
25	PAFZZ	5330-00-587-6405	14569	020-0146-00	GASKET	1
26	XDFZZ		14569	100-0012-26	SCREW,HEX HEAD	16
27	XBFZZ		14569	005-0650-00	COVER,STATOR	1
28	PBFZZ	5330-01-484-7314	14569	020-0709-00	GASKET	1
29	XDFZZ		14569	103-0025-07	STUD	2
30	XDFZZ		14569	509-0034-10	PUMP,OIL GROUP	1
31	PAFZZ	5330-01-276-5774	14569	020-0732-00	GASKET	1
32	XDFZZ		14569	100-0013-20	SCREW,HEX HEAD	6
33	XDFZZ		14569	100-0182-02	SCREW, HEX HEAD	29
34	XBFZZ		14569	505-0360-00	COVER,HSG BRG ASSY	1
35	PAFZZ	5330-01-032-3353	14569	020-0104-00	GASKET	1



**GROUP 04 REFRIGERATION SYSTEM  
COMPRESSOR  
REPAIR PARTS LIST**

(1) ITEM NO.	(2) SMR CODE	(3) NSN	(4) CAGEC	(5) PART NUMBER	(6) DESCRIPTION AND USABLE ON CODE (UOC)	(7) QTY
					GROUP 04 REFRIGERATION SYSTEM	
					FIG. 11 COMPRESSOR	
36	PAFZZ	4130-01-032-0828	14569	036-0008-02	PLUG	2
37	XDFZZ		14569	100-0062-52	SCREW,HEX HEAD	8
38	XBFZZ		14569	002-0339-00	HEAD,CYLINDER	1
39	PBFZZ	4130-01-485-7757	14569	503-0423-03	VALVE PLATE,COMPRESSOR	1
40	PBFZZ	5330-01-484-7320	14569	020-0756-00	GASKET	1
41	PBFZZ	5330-01-484-7318	14569	020-0757-04	GASKET	1
42	PAFZZ	5305-00-981-2578	14569	100-0028-04	SCREW	2
43	XDFZZ		14569	071-0429-08	PROTECTOR	1
44	XAFZZ		14569	007-0107-03	CRANKSHAFT	1
45	XAFZZ		14569	025-0002-35	RING PISTON	2
46	XAFZZ		14569	025-0088-35	RING PISTON	2
47	XAFZZ		14569	504-0217-00	PISTON,PIN & ROD	2
48	PBFZZ	6680-01-125-4514	14569	998-0002-02	PARTS KIT, SIGHT INDICATOR	1
49	PAFZZ	4130-00-017-9650	14569	100-0028-05	BOLT ASSEMBLY	3
50	XAFZZ		14569	020-0844-01	SEAL	1
51	XBFZZ		14569	003-0099-00	PLATE,BOTTOM,COMPRESSOR	1
52	PAFZZ	5330-00-359-6272	14569	020-0159-00	GASKET	1
53	XDFZZ		14569	013-0084-00	SCREEN,STRAINER	1
54	PAFZZ	4820-00-980-1671	14569	510-0142-00	VALVE,CHECK	1

**GROUP 04 REFRIGERATION SYSTEM  
COMPRESSOR  
REPAIR PARTS LIST**

(1) ITEM NO.	(2) SMR CODE	(3) NSN	(4) CAGEC	(5) PART NUMBER	(6) DESCRIPTION AND USABLE ON CODE (UOC)	(7) QTY
					GROUP 04 REFRIGERATION SYSTEM	
					FIG. 11 COMPRESSOR	
55	PBFZZ	4130-01-149-5753	14569	003-0060-00	FOOT,MOUNTING	1
56	PAFZZ	5975-00-642-7261	59730	142	LOCKNUT,ELECTRICAL	1
57	PAFZZ	5975-00-539-6912	59730	2535	BOX CONNECTOR,ELECTRICAL	1
END OF FIGURE						

THIS PAGE INTENTIONALLY LEFT BLANK

UNIT AND DIRECT SUPPORT MAINTENANCE  
REFRIGERATION UNIT, MECHANICAL, 9K BTU, ELECTRIC  
MODEL F9000RE  
HEAT SHIELD FRAME

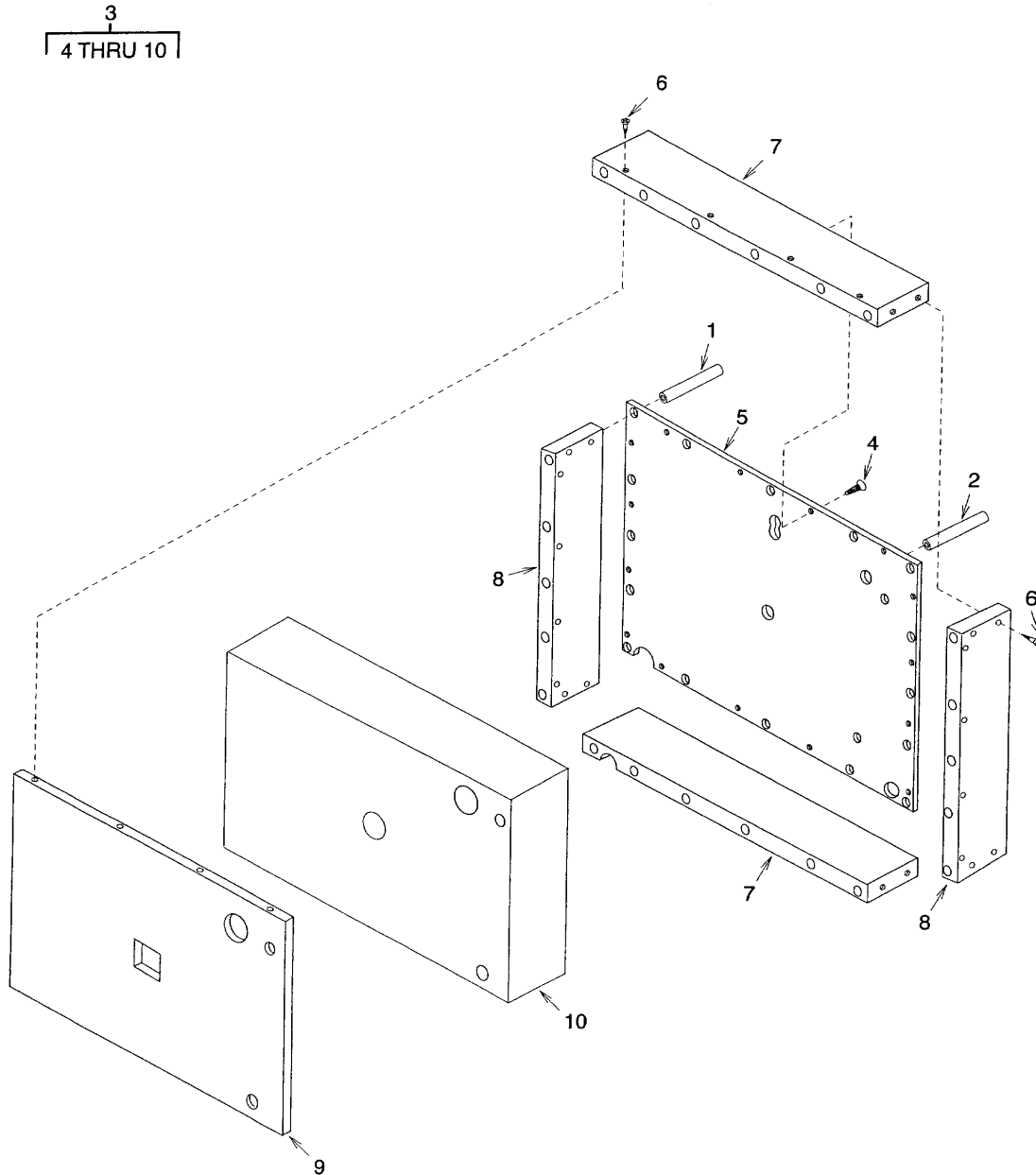


Figure 12. Heat Shield Frame

**GROUP 05 ENCLOSURE  
HEAT SHIELD FRAME  
REPAIR PARTS LIST**

(1) ITEM NO.	(2) SMR CODE	(3) NSN	(4) CAGEC	(5) PART NUMBER	(6) DESCRIPTION AND USABLE ON CODE (UOC)	(7) QTY
GROUP 05 ENCLOSURE FIG. 12 HEAT SHIELD FRAME						
1	XDFZZ		94833	152K0127-1	SLEEVE,MOUNTING	16
2	XDFZZ		94833	152K0131	SLEEVE,ACCESS	1
3	PBFFA	4130-01-484-0646	94833	152K0103-1	FRAME,HEAT SHIELD	1
4	XDFZZ		94833	53581-8-20	SCREW,WOOD,FLAT HD	16
5	XAFZZ		94833	152K0105	SHEET,FRAME	1
6	XDFZZ		94833	53581-8-32	SCREW,WOOD,FLAT HD	24
7	XAFZZ		94833	152K0104-1	BEAM,FRAME	2
8	XAFZZ		94833	152K0104-3	BEAM,FRAME	2
9	XAFZZ		94833	152K0130	SHEET,CLOSURE	1
10	XAFZZ		94833	152K0038	INSULATION,HEATSHIELD	1
END OF FIGURE						

THIS PAGE INTENTIONALLY LEFT BLANK

THIS PAGE INTENTIONALLY LEFT BLANK

UNIT AND DIRECT SUPPORT MAINTENANCE  
REFRIGERATION UNIT, MECHANICAL, 9K BTU, ELECTRIC  
MODEL F9000RE  
HEAT SHIELD GASKETS

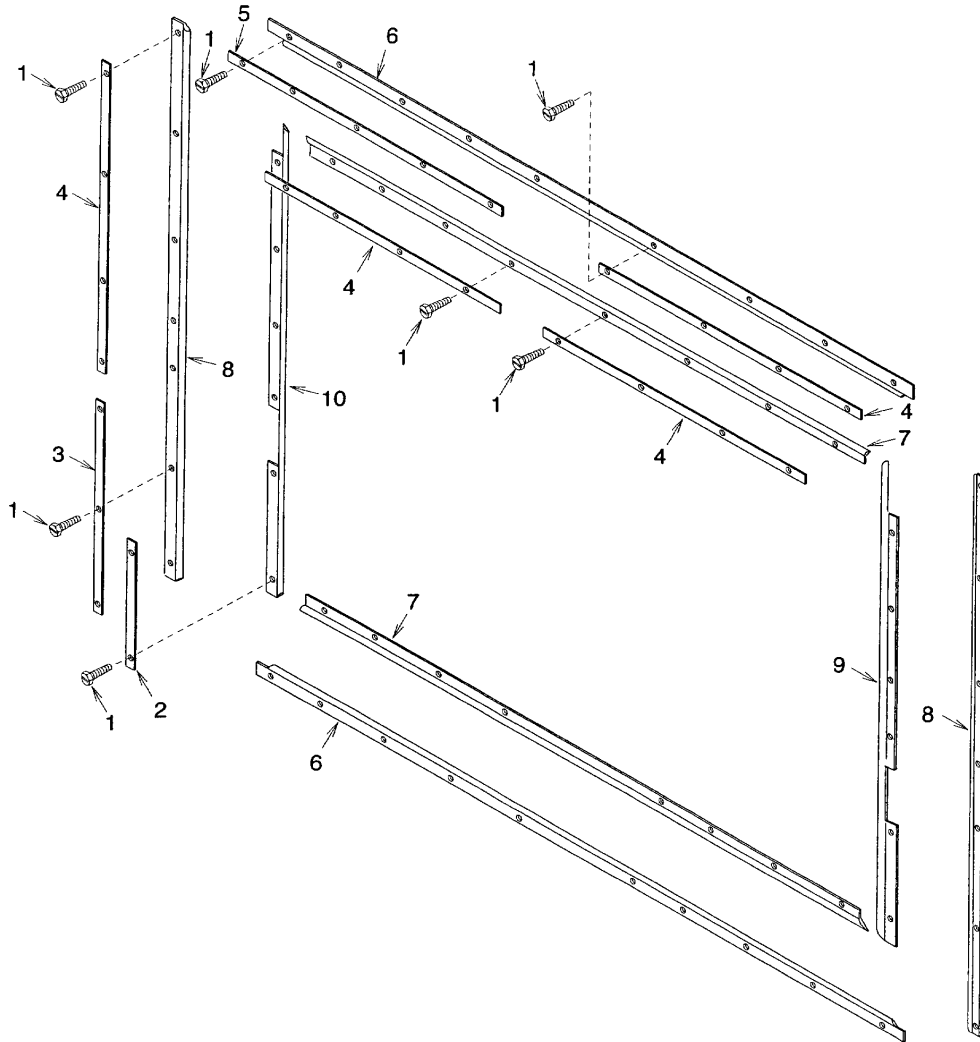


Figure 13. Heat Shield Gaskets



**GROUP 05 ENCLOSURE  
HEAT SHIELD GASKETS  
REPAIR PARTS LIST**

(1) ITEM NO.	(2) SMR CODE	(3) NSN	(4) CAGEC	(5) PART NUMBER	(6) DESCRIPTION AND USABLE ON CODE (UOC)	(7) QTY
GROUP 05 ENCLOSURE						
FIG. 13 HEAT SHIELD GASKETS						
1	XDFZZ		96906	MS51851-54	SCREW,TAPPING	60
2	XDFZZ		94833	150K0168-5	STRIP,GASKET RETAINER (2 HOLE)	2
3	XDFZZ		94833	150K0168-7	STRIP,GASKET RETAINER (3 HOLE)	2
4	XDFZZ		94833	150K0168-1	STRIP,GASKET RETAINER (4 HOLE)	10
5	XDFZZ		94833	150K0168-3	STRIP,GASKET RETAINER (5 HOLE)	2
6	MFFZZ		94833	152K0159	GASKET,OUTSIDE, TOP/ BOTTOM. MAKE FROM (74951) V-1234-25, 42.12 IN. LG.	2
7	MFFZZ		94833	152K0161	GASKET,INSIDE, TOP/ BOTTOM. MAKE FROM (74951) V-1234-25, 38.00 IN. LG.	2
8	MFFZZ		94833	152K0160	GASKET,OUTSIDE, RIGHT/LEFT SIDE MAKE FROM (74951) V-1234-25, 31.38 IN. LG.	2
9	MFFZZ		94833	152K0158-2	GASKET,INSIDE, RIGHT/LEFT SIDE (LEFT). MAKE FROM (74951) V-1234-25, 29.38 IN. LG.	1
10	MFFZZ		94833	152K0158-1	GASKET,INSIDE, RIGHT/LEFT SIDE (RIGHT). MAKE FROM (74951) V-1234- 25, 29.38 IN. LG.	1
END OF FIGURE						

THIS PAGE INTENTIONALLY LEFT BLANK

THIS PAGE INTENTIONALLY LEFT BLANK

UNIT AND DIRECT SUPPORT MAINTENANCE  
REFRIGERATION UNIT, MECHANICAL, 9K BTU, ELECTRIC  
MODEL F9000RE  
CONDENSER ENCLOSURE

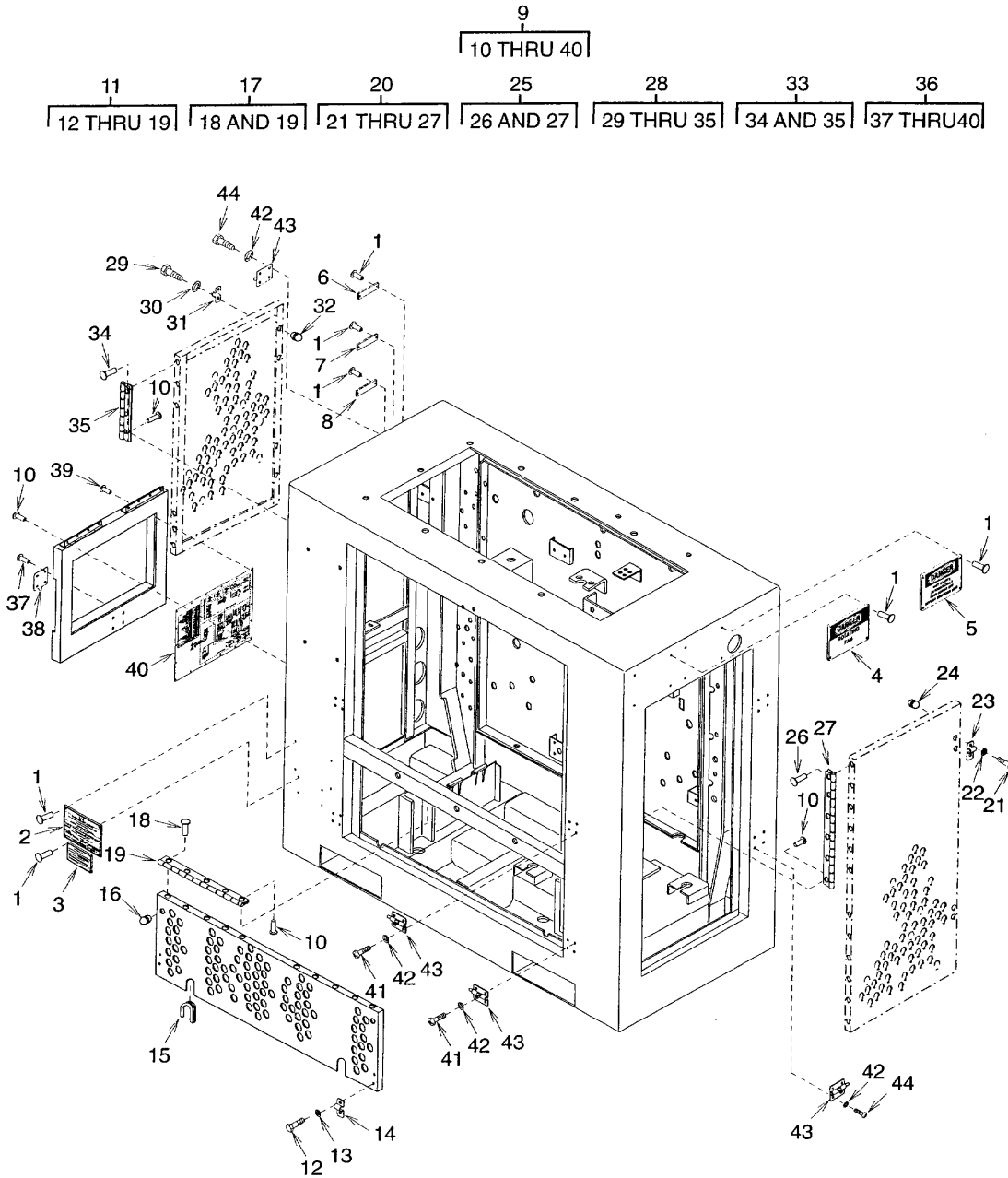


Figure 14. Condenser Enclosure

**GROUP 05 ENCLOSURE  
CONDENSER ENCLOSURE  
REPAIR PARTS LIST**

(1) ITEM NO.	(2) SMR CODE	(3) NSN	(4) CAGEC	(5) PART NUMBER	(6) DESCRIPTION AND USABLE ON CODE (UOC)	(7) QTY
					GROUP 05 ENCLOSURE	
					FIG. 14 CONDENSER ENCLOSURE	
1	PAFZZ	5320-01-259-2470	34984	123-000-544	RIVET,BLIND	30
2	PAFZZ	9905-01-484-7602	94833	120K1492	PLATE,IDENTIFICATION (F9000RE)	1
3	PAFZZ	9905-01-484-4562	94833	120K1520	PLATE,IDENTIFICATION	1
4	PAFZZ	9905-01-484-3216	94833	500K1947	PLATE,IDENTIFICATION	2
5	PAFZZ	9905-01-484-7604	94833	500K1948	PLATE,INSTRUCTION	2
6	PAFZZ	9905-01-483-3664	94833	148K0164-3	PLATE,IDENTIFICATION (TEMP)	1
7	PAFZZ	9905-01-483-3661	94833	148K0164-1	PLATE,IDENTIFICATION (HIGH)	1
8	PAFZZ	9905-01-483-3658	94833	148K0164-5	PLATE,IDENTIFICATION (LOW)	1
9	XDFFF		94833	152K0001-1	ENCLOSURE,CONDENSER	1
10	PAFZZ	5320-01-258-4675	05693	SSPV-64	RIVET,BLIND	34
11	PBFFZ	5340-01-483-6441	94833	152K0051-1	DOOR,ACCESS,GENERAL	1
12	XDOZZ		94833	500K1928-21	BOLT,HEX HEAD	4
13	XDOZZ		94833	500K1950-3	WASHER,LOCK	4
14	PAOZZ	5340-01-486-2051	94833	500K2093	BARREL BOLT (USE CLIP ONLY)	2
15	XDFZZ		94833	500K1662-2-11.33	GROMMET (11.33 IN. LG.)	2
16	PAOZZ	5340-00-598-7840	70485	806	BUMPER,NONMETALLIC	6
17	XBFFF		94833	152K0072-1	DOOR,FRONT	1
18	PAFZZ	5320-01-258-4675	05693	SSPV-64	RIVET,BLIND	10

**GROUP 05 ENCLOSURE  
CONDENSER ENCLOSURE  
REPAIR PARTS LIST**

(1) ITEM NO.	(2) SMR CODE	(3) NSN	(4) CAGEC	(5) PART NUMBER	(6) DESCRIPTION AND USABLE ON CODE (UOC)	(7) QTY
					GROUP 05 ENCLOSURE FIG. 14 CONDENSER ENCLOSURE	
19	XDFZZ		94833	152K0073	HINGE	2
20	PBFFZ	5340-01-484-0086	94833	152K0120-1	DOOR,ACCESS,GENERAL	1
21	XDOZZ		94833	500K1928-21	BOLT,HEX HEAD	4
22	XDOZZ		94833	500K1950-3	WASHER,LOCK	4
23	PAOZZ	5340-01-486-2051	94833	500K2093	BARREL BOLT (USE CLIP ONLY)	2
24	PAOZZ	5340-00-598-7840	70485	806	BUMPER,NONMETALLIC	4
25	XAFFF		94833	152K0091-1	DOOR,RIGHT SIDE	1
26	PAFZZ	5320-01-258-4675	05693	SSPV-64	RIVET,BLIND	10
27	XDFZZ		94833	152K0073	HINGE	2
28	PBFFZ	5340-01-484-0126	94833	152K0119-1	DOOR,ACCESS,GENERAL	1
29	XDOZZ		94833	500K1928-21	BOLT,HEX HEAD	4
30	XDOZZ		94833	500K1950-3	WASHER,LOCK	4
31	PAOZZ	5340-01-486-2051	94833	500K2093	BARREL BOLT (USE CLIP ONLY)	2
32	PAOZZ	5340-00-598-7840	70485	806	BUMPER,NONMETALLIC	4
33	XAFFF		94833	152K0088-1	DOOR,LEFT SIDE	1
34	PAFZZ	5320-01-258-4675	05693	SSPV-64	RIVET,BLIND	6
35	XDFZZ		94833	152K0089	HINGE	2
36	PBFFZ	5340-01-484-0545	94833	152K0122-1	DOOR,ACCESS,GENERAL	1

**GROUP 05 ENCLOSURE  
CONDENSER ENCLOSURE  
REPAIR PARTS LIST**

(1) ITEM NO.	(2) SMR CODE	(3) NSN	(4) CAGEC	(5) PART NUMBER	(6) DESCRIPTION AND USABLE ON CODE (UOC)	(7) QTY
					GROUP 05 ENCLOSURE	
					FIG. 14 CONDENSER ENCLOSURE	
37	PAOZZ	5320-01-258-4675	05693	SSPV-64	RIVET,BLIND	4
38	PAOZZ	5340-01-486-2051	94833	500K2093	BARREL BOLT (USE SLIDE BOLT ONLY)	1
39	PAOZZ	5320-00-754-4501	96906	MS24662-7	RIVET,BLIND	18
40	PAFZZ	9905-01-484-7603	94833	152K0007-1	PLATE,INSTRUCTION / F9000RE	1
41	XDOZZ		94833	500K1928-19	BOLT,HEX HEAD	16
42	XDOZZ		94833	500K1950-3	WASHER,LOCK	32
43	PAOZZ	5340-01-486-2051	94833	500K2093	BARREL BOLT (USE SLIDE BOLT ONLY).	8
44	XDOZZ		94833	500K1928-21	BOLT,HEX HEAD	16
END OF FIGURE						

THIS PAGE INTENTIONALLY LEFT BLANK



**GROUP 06 BULK MATERIALS  
REPAIR PARTS LIST**

(1) ITEM NO.	(2) SMR CODE	(3) NSN	(4) CAGEC	(5) PART NUMBER	(6) DESCRIPTION AND USABLE ON CODE (UOC)	(7) QTY
GROUP 06 BULK MATERIALS						
FIG. BULK ITEMS						
1	PAFZZ	5640-01-195-6254	97403	13225E8562	ACOUSTICAL, FOAM	1
2	PAOZZ	6145-00-191-8403	81348	QQB575R30T0281	BRAID, WIRE	100
3	PAFZZ	6145-01-484-4081	94833	500K1915-5	CABLE, POWER , ELECTRICAL, HEAVY DUTY, SERVICE CABLE, 600 VAC, 90 DEGREE C, BLACK, OIL RESISTANT JACKET	1
4	PAOZZ	9320-01-486-5215	94833	555K5004-2HN-07-21	GASKET, 1/8 THK 40 INCH X 70 INCH SHEETS	V
5	PAOZZ	5970-01-358-0385	81349	M23053/4-107-0	INSULATION, SLEEVING 1.00 INCH DIAMETER, SHRINK TO 0.400	V
6	PAOZZ	5970-00-812-2968	81349	M23053/5-102-0	INSULATION, SLEEVING	V
7	PAOZZ	5970-00-814-2878	92194	FIT221 1/4 WHITE	INSULATION, SLEEVING	V
8	PAOZZ	5970-00-954-1624	81349	M23053/5-107-0	INSULATION, SLEEVING	V
9	PAFZZ	5330-01-391-2800	74951	V-1234-25	SEAL, NONMETALLIC, SPECIAL	100
10	PAFZZ	4710-00-768-3638	81346	ASTMB280-80	TUBE METALLIC (81346)ASTM-B280 /0.125 OD X 0.030 WALL	1
11	PAFZZ	4710-01-434-0416	81346	ASTM-B280X0.250	TUBE METALLIC (81346)ASTM-B280 / 0.250 OD X 0.030 WALL	1
12	PAFZZ	4710-00-277-5527	02413	800E2730	TUBE METALLIC (81346)ASTM-B280 / 0.375 OD X 0.032 WALL	1
13	PAFZZ	4710-00-424-2694	95535	55229	TUBE METALLIC (81346)ASTM-B280 / 0.500 OD X 0.030 WALL	450

**GROUP 06 BULK MATERIALS  
REPAIR PARTS LIST**

(1) ITEM NO.	(2) SMR CODE	(3) NSN	(4) CAGEC	(5) PART NUMBER	(6) DESCRIPTION AND USABLE ON CODE (UOC)	(7) QTY
GROUP 06 BULK MATERIALS						
FIG. BULK ITEMS						
14	PAFZZ	4710002774508	19207	8689211	TUBE, METALLIC (81346)ASTM-B280 / 0.625 OD X 0.035 WALL	1
15	PAFZZ	4710002774528	16236	CS4710-0004IM	TUBE, METALLIC (81346)ASTM-B280 / 0.875 OD X 0.045 WALL	650
16	PAFZZ	710002775533	27188	MH800E6574	TUBE, METALLIC (81346)ASTM-B280 / 1.125 OD X 0.050 WALL	500
17	PAFZZ	4720008417872	81348	ZZ-T-831 TY5CL2	TUBING, NONMETALLIC	100
18	PAOZZ	6145005787514	81349	M5086/2-12-9	WIRE, ELECTRICAL,	V
19	PAOZZ	6145005786604	81349	M5086/2-14-9	WIRE, ELECTRICAL,	V
20	PAOZZ	6145005786602	81349	M5086/2-18-9	WIRE ELECTRICAL	V
21	PAOZZ	5640014341250	03938	APT11812	INSULATION ,SLEEVING	V
END OF FIGURE						

---

**SPECIAL TOOLS LIST**

---

There are no special tools required for the Refrigeration Unit, Mechanical, 9K BTU, Electric Model F9000RE.

THIS PAGE LEFT INTENTIONALLY BLANK

UNIT AND DIRECT SUPPORT MAINTENANCE

REFRIGERATION UNIT, MECHANICAL, 9K BTU, ELECTRIC  
F900RE

NATIONAL STOCK NUMBER INDEX

STOCK NUMBER	FIG.	ITEM	STOCK NUMBER	FIG.	ITEM
4730-00-013-8707	7	36	5940-00-204-8966	3	49
4130-00-017-9650	11	49		3	53
5305-00-054-6672	1	5		3	65
5305-00-066-7327	2	6		3	73
5310-00-068-1322	1	8		3	76
5305-00-088-9670	4	17		3	80
4730-00-090-0832	9	13		3	94
5940-00-113-9828	3	151		3	98
5940-00-114-1316	4	48		3	101
4720-00-116-7493	7	44		3	106
5310-00-121-8009	4	57		3	111
5310-00-122-7281	1	9		3	114
	10	7		3	117
5930-00-126-3132	5	6		3	120
5940-00-143-4661	3	19		3	126
	3	37		3	129
5940-00-143-4771	3	24		3	134
	3	90		3	137
	3	121		3	162
5940-00-143-4774	3	155		3	165
	3	158		3	168
5940-00-143-4780	3	39		3	171
5940-00-143-4794	3	4		3	193
	3	7	4730-00-228-0826	7	14
	3	10		7	66
	3	21		10	42
	3	140	4730-00-235-4066	7	50
5355-00-151-6034	4	16		10	34
5975-00-152-1144	6	5	4730-00-254-6211	7	47
5975-00-156-3253	3	1		8	8
	8	4	4730-00-254-6450	7	32
	9	3	4730-00-263-6460	10	50
	10	27	4730-00-264-9157	7	33
5325-00-174-5316	4	52	4730-00-268-3697	8	7
5325-00-185-0004	7	96	5305-00-269-4530	10	1
	10	54	4710-00-277-4528	BULK	15
4730-00-189-2737	9	11	4710-00-277-5533	BULK	16
	10	39	4730-00-277-7922	7	99
4730-00-189-2739	7	69	5920-00-281-0225	4	29
	7	80	5340-00-291-5323	9	8
	7	85	5330-00-359-6272	11	52
	7	101	5330-00-369-3464	11	8
	7	104	5320-00-411-9439	10	59
4730-00-189-2742	7	30	4710-00-424-2694	BULK	13
6145-00-191-8403	BULK	2	6680-00-426-8643	7	88
5340-00-200-7449	7	55	5306-00-449-5914	11	6
5940-00-204-8966	3	28	5305-00-450-1943	11	18
	3	31	5970-00-494-8284	7	73
	3	34	5970-00-494-8285	3	20
	3	42		3	38

UNIT AND DIRECT SUPPORT MAINTENANCE

REFRIGERATION UNIT, MECHANICAL, 9K BTU, ELECTRIC  
F9000RE

NATIONAL STOCK NUMBER INDEX

STOCK NUMBER	FIG.	ITEM	STOCK NUMBER	FIG.	ITEM
5970-00-494-8285	3	61	4730-00-908-6292	10	32
	3	70	5325-00-913-2606	8	3
	3	105	4130-00-922-7083	7	7
	3	110	6685-00-924-9434	9	14
	3	125	4810-00-928-8927	7	77
	3	133	5325-00-938-6702	7	65
5930-00-498-5895	10	11		10	55
5975-00-539-6912	11	57	6240-00-939-7859	4	2
5940-00-557-1629	3	59	6685-00-948-0928	9	15
	3	64	5940-00-948-9686	3	45
	3	68		3	52
	3	143		3	56
	3	150		3	79
6145-00-578-6602	BULK	20		3	83
6145-00-578-6604	BULK	19		3	86
6145-00-578-7514	BULK	18		3	89
5340-00-579-9678	7	8		3	93
5320-00-582-3298	10	46		3	97
5330-00-587-6405	11	25		3	174
5340-00-598-0529	7	37		3	177
5340-00-598-7840	14	16		3	180
	14	24		3	183
	14	32		3	186
5320-00-616-4353	10	25		3	189
5940-00-620-9780	3	60	5970-00-954-1624	BULK	8
	3	69	5305-00-959-1909	10	19
	3	124	4820-00-980-1671	11	54
	3	132	5940-00-981-2568	11	19
5930-00-683-1628	4	5	5305-00-981-2570	11	20
5305-00-717-5593	4	30	5306-00-981-2573	11	2
5305-00-719-5342	4	21	5305-00-981-2578	11	42
5975-00-727-5153	3	2	4130-00-981-2582	11	21
5310-00-728-5503	7	111	5940-00-983-6122	4	51
5310-00-728-5505	10	60	6685-00-987-5600	9	4
5320-00-754-4501	14	39	5315-00-995-0569	6	19
4710-00-768-3638	BULK	10	4730-00-995-2651	7	63
5305-00-780-1131	2	3		10	29
4730-00-809-9680	7	49	4130-01-032-0828	11	36
5970-00-812-2968	BULK	6	5330-01-032-3353	11	35
4730-00-813-3721	7	43	5310-01-058-3350	10	24
4130-00-814-0450	8	5	5940-01-063-9908	4	42
5970-00-814-2878	BULK	7	5325-01-088-7468	10	56
4730-00-814-8519	7	40	5940-01-091-2560	7	72
4730-00-818-7484	7	45	4730-01-092-3835	7	46
3030-00-826-5151	6	1	6210-01-098-3886	4	1
5325-00-834-1789	7	71	6680-01-125-4514	11	48
5315-00-839-5821	6	9	5340-01-132-8740	10	23
6210-00-840-0848	4	3	5340-01-143-9758	10	44
5305-00-900-0567	2	1	5310-01-146-9773	10	58
4730-00-908-3195	7	106	4810-01-147-6802	7	76

UNIT AND DIRECT SUPPORT MAINTENANCE

REFRIGERATION UNIT, MECHANICAL, 9K BTU, ELECTRIC  
F900RE

NATIONAL STOCK NUMBER INDEX

STOCK NUMBER	FIG.	ITEM	STOCK NUMBER	FIG.	ITEM
5340-01-148-3722	7	93	5340-01-484-0545	14	36
	9	7	4140-01-484-0644	6	18
	10	22	4130-01-484-0646	12	3
4130-01-149-5753	11	55	4140-01-484-0649	6	23
5310-01-167-2415	2	4	4130-01-484-0761	7	112
	4	56	9905-01-484-3216	14	4
4820-01-192-5887	7	54	6145-01-484-4081	BULK	3
5640-01-195-6254	BULK	1	9905-01-484-4562	14	3
5930-01-211-3339	10	28	6110-01-484-4674	4	39
5320-01-258-4675	14	10	4820-01-484-6873	7	41
	14	18	5331-01-484-7302	11	22
	14	26	5330-01-484-7314	11	28
	14	34	5330-01-484-7318	11	41
	14	37	5330-01-484-7320	11	40
5320-01-259-2470	14	1	9905-01-484-7602	14	2
5330-01-276-5774	11	31	9905-01-484-7603	14	40
5330-01-278-9526	11	4	9905-01-484-7604	14	5
5320-01-282-7547	7	110	5935-01-484-7746	4	45
5310-01-324-7187	7	109	6645-01-484-9671	4	44
5330-01-333-8101	7	25	3020-01-485-0024	6	2
5970-01-358-0385	BULK	5	3020-01-485-0468	6	20
5930-01-361-6333	8	6	5365-01-485-0522	11	11
5920-01-366-0796	4	31	4820-01-485-0527	7	17
5330-01-391-2800	BULK	9	4820-01-485-0530	7	16
4130-01-394-7836	7	60	5340-01-485-0689	7	24
4730-01-397-1195	7	89		7	61
5999-01-420-4737	4	32	4130-01-485-0699	10	33
4710-01-434-0416	BULK	11	4730-01-485-0721	7	9
6210-01-456-6895	4	4	5945-01-485-1175	4	43
5340-01-471-4306	7	52	3130-01-485-1737	6	17
6645-01-477-5316	4	8	4820-01-485-1934	11	7
6685-01-483-2313	4	23	4130-01-485-7757	11	39
6110-01-483-2607	4	37	4820-01-485-8754	10	45
5930-01-483-2663	4	24	5340-01-486-2051	14	14
9905-01-483-3658	14	8		14	38
9905-01-483-3661	14	7		14	43
9905-01-483-3664	14	6	4130-01-486-2928	11	1
5930-01-483-4018	4	9	5925-01-486-3185	4	15
5340-01-483-6203	1	3	6105-01-486-3494	6	6
5340-01-483-6225	1	4	4820-01-486-4858	7	38
5340-01-483-6441	14	11	9320-01-486-5215	BULK	4
5340-01-483-6453	1	11			
5340-01-483-6474	1	10			
5340-01-483-6492	4	12			
3040-01-483-8105	6	24			
4520-01-483-9040	10	16			
5935-01-483-9137	5	7			
5935-01-483-9141	3	196			
5340-01-484-0086	14	20			
5340-01-484-0126	14	28			

THIS PAGE INTENTIONALLY LEFT BLANK



## UNIT AND DIRECT SUPPORT MAINTENANCE

REFRIGERATION UNIT, MECHANICAL, 9K BTU, ELECTRIC  
F9000RE

## PART NUMBER INDEX

CAGEC	PART NUMBER	STOCK NUMBER	FIG.	ITEM
70255	AFAE-1-MC-3/8 X 1/2SAE	4820-01-485-8754	10	45
70255	AMI1MM3	6680-00-426-8643	7	88
27192	AN16DNY8EB	6110-01-483-2607	4	37
81346	ASTM-B280X0.250	4710-01-434-0416	BULK	11
81346	ASTMB280-80	4710-00-768-3638	BULK	10
41947	A127	4730-00-268-3697	8	7
88216	A1557	4730-00-995-2651	7	63
			10	29
50831	A28GJ-30C	6685-01-483-2313	4	23
41947	A4622	4730-00-090-0832	9	13
71176	A50	3030-00-826-5151	6	1
1W654	B-972		3	48
			3	144
			3	147
81205	BACG20AF12D4	5325-00-913-2606	8	3
71176	BK34	3020-01-485-0024	6	2
80204	B16.22	4730-00-818-7484	7	45
78462	B9F2	4810-01-147-6802	7	76
60532	CNT202	5930-00-498-5895	10	11
16236	CS4710-0004IM	4710-00-277-4528	BULK	15
27192	C320KG1		4	38
56501	E10261	5940-00-114-1316	4	48
01963	E13-00M	5930-00-126-3132	5	6
30327	E14A	4730-00-254-6211	8	8
97765	FC 6	4730-01-485-0721	7	9
92194	FIT221 1/4WHITE	5970-00-814-2878	BULK	7
03ZL1	HLC-6032-3C	5935-01-483-9137	5	7
03ZL1	HLP-6032-3C	5935-01-483-9141	3	196
27192	H2013B-3	5999-01-420-4737	4	32
97765	H300	4130-01-485-0699	10	33
70255	IPR-10-7/8 OD F-6 5/225	4820-01-486-4858	7	38
71176	ITA44		6	21
27188	MH800E6574	4710-00-277-5533	BULK	16
78462	MKC-2	4810-00-928-8927	7	77
96906	MS16996-11	5305-00-959-1909	10	19
96906	MS17810-4	4820-01-484-6873	7	41
96906	MS20066-213	5315-00-995-0569	6	19
96906	MS20605-S3W3	5320-01-282-7547	7	110
96906	MS21077-4	5310-00-728-5503	7	111
96906	MS21077-6	5310-00-728-5505	10	60
96906	MS21919WCG16	5340-01-143-9758	10	44
96906	MS21919WCG6	5340-01-148-3722	7	93
			9	7
			10	22
96906	MS21919WCG7	5340-01-132-8740	10	23

UNIT AND DIRECT SUPPORT MAINTENANCE

REFRIGERATION UNIT, MECHANICAL, 9K BTU, ELECTRIC  
F9000RE

PART NUMBER INDEX

CAGEC	PART NUMBER	STOCK NUMBER	FIG.	ITEM
96906	MS21919WDG18	5340-00-200-7449	7	55
96906	MS21919WDG28	5340-00-598-0529	7	37
96906	MS21919WDG32	5340-00-579-9678	7	8
96906	MS21919WDG4	5340-00-291-5323	9	8
96906	MS24523-22	5930-00-683-1628	4	5
96906	MS24662-7	5320-00-754-4501	14	39
96906	MS24665-351	5315-00-839-5821	6	9
96906	MS24693-C28	5305-00-066-7327	2	6
96906	MS24693-C30	5305-00-717-5593	4	30
96906	MS24693-C53	5305-00-088-9670	4	17
96906	MS24693-C70	5305-00-900-0567	2	1
96906	MS24693-C72	5305-00-780-1131	2	3
96906	MS25036-102	5940-00-204-8966	3	28
			3	31
			3	34
			3	42
			3	49
			3	53
			3	65
			3	73
			3	76
			3	80
			3	94
			3	98
			3	101
			3	106
			3	111
			3	114
			3	117
			3	120
			3	126
			3	129
			3	134
			3	137
			3	162
			3	165
			3	168
			3	171
			3	193
96906	MS25036-103	5940-00-143-4771	3	24
			3	90
			3	121
96906	MS25036-108	5940-00-143-4780	3	39
96906	MS25036-112	5940-00-143-4794	3	4
			3	7
			3	10
			3	21

## UNIT AND DIRECT SUPPORT MAINTENANCE

REFRIGERATION UNIT, MECHANICAL, 9K BTU, ELECTRIC  
F9000RE

## PART NUMBER INDEX

CAGEC	PART NUMBER	STOCK NUMBER	FIG.	ITEM
			3	140
96906	MS25036-148	5940-00-113-9828	3	151
96906	MS25036-149	5940-00-557-1629	3	59
			3	64
			3	68
			3	143
			3	150
96906	MS25036-153	5940-00-143-4774	3	155
96906	MS25036-153	5940-00-143-4774	3	158
96906	MS27130-CR19K	5310-01-167-2415	2	4
			4	56
96906	MS27130-CR20K	5310-01-058-3350	10	24
96906	MS27130-CR93K	5310-00-068-1322	1	8
96906	MS27130-S127K	5310-01-324-7187	7	109
96906	MS27130-S94K	5310-01-146-9773	10	58
96906	MS27211-2	6685-00-987-5600	9	4
96906	MS3367-2-9	5975-00-156-3253	3	1
			8	4
			9	3
			10	27
96906	MS3367-4-9	5975-00-727-5153	3	2
96906	MS35489-118	5325-00-834-1789	7	71
96906	MS35489-2	5325-00-174-5316	4	52
96906	MS35489-40	5325-00-185-0004	7	96
			10	54
96906	MS35489-55	5325-00-938-6702	7	65
			10	55
96906	MS35842-10	4730-00-908-3195	7	106
96906	MS35842-14	4730-00-908-6292	10	32
96906	MS35845-3	4130-00-922-7083	7	7
96906	MS35872-2	4730-00-189-2737	9	11
			10	39
96906	MS35872-3	4730-00-189-2739	7	80
			7	85
			7	101
			7	104
96906	MS35872-4	4730-00-228-0826	7	14
			7	66
			10	42
96906	MS35872-5	4730-00-189-2742	7	30
96906	MS35880-2		7	83
96906	MS35927-7	4730-00-264-9157	7	33
96906	MS35928-3U		7	98
96906	MS35928-7U	4730-00-813-3721	7	43
96906	MS35929-3	4730-00-263-6460	10	50
54214	MS39162-3	4730-00-254-6211	7	47
96906	MS51851-54		13	1

UNIT AND DIRECT SUPPORT MAINTENANCE

REFRIGERATION UNIT, MECHANICAL, 9K BTU, ELECTRIC  
F9000RE

PART NUMBER INDEX

CAGEC	PART NUMBER	STOCK NUMBER	FIG.	ITEM
96906	MS51957-47	5305-00-054-6672	1	5
96906	MS51963-34	5305-00-719-5342	4	21
96906	MS90727-77	5305-00-269-4530	10	1
96906	MS91528-2T4B	5355-00-151-6034	4	16
71400	MTH6	5920-00-281-0225	4	29
81349	M23053/4-107-0	5970-01-358-0385	BULK	5
81349	M23053/5-102-0	5970-00-812-2968	BULK	6
81349	M23053/5-107-0	5970-00-954-1624	BULK	8
81349	M5086/2-12-9	6145-00-578-7514	BULK	18
81349	M5086/2-14-9	6145-00-578-6604	BULK	19
81349	M5086/2-18-9	6145-00-578-6602	BULK	20
80205	NAS1329C06KB75	5310-00-121-8009	4	57
80205	NAS1329HO8K130L		10	52
80205	NAS1329H3K130L		10	53
80205	NAS1330C08KB106	5310-00-122-7281	1	9
			10	7
70255	OPR-10 1.1250DF 0-60PSI	4820-01-192-5887	7	54
71176	P1		6	22
50831	P45NCA-12	4130-00-814-0450	8	5
92578	P70LB-1C	5930-01-361-6333	8	6
51107	QC-11	5935-01-484-7746	4	45
81348	QQB575R30T0281	6145-00-191-8403	BULK	2
53551	RV250-4-2	5320-00-582-3298	10	46
53551	RV250-6-2	5320-00-616-4353	10	25
71400	S-8301-2	5920-01-366-0796	4	31
05693	SSPV-64	5320-01-258-4675	14	10
			14	18
			14	26
			14	34
			14	37
1HM04	TDF-220-AKB-24H	6645-01-484-9671	4	44
74951	V-1234-25	5330-01-391-2800	BULK	9
12697	VC10F-5K		3	153
41947	W-1019N		7	68
41947	W-1737	4730-00-013-8707	7	36
41947	W-2009	4730-01-397-1195	7	89
41947	W-2022	4730-00-254-6450	7	32
41947	W-2312	4730-00-277-7922	7	99
41947	W-2344	4730-00-235-4066	7	50
			10	34
41947	W-4035	4730-00-814-8519	7	40
41947	WC-2334		7	35
41947	W1743	4730-00-809-9680	7	49
81348	ZZ-T-831 TY5CL2	4720-00-841-7872	BULK	17
14569	002-0339-00		11	38
14569	003-0060-00	4130-01-149-5753	11	55

## UNIT AND DIRECT SUPPORT MAINTENANCE

REFRIGERATION UNIT, MECHANICAL, 9K BTU, ELECTRIC  
F9000RE

## PART NUMBER INDEX

CAGEC	PART NUMBER	STOCK NUMBER	FIG.	ITEM
14569	003-0099-00		11	51
14569	005-0650-00		11	27
14569	006-0012-02		11	12
14569	007-0107-03		11	44
14569	013-0078-00		11	5
14569	013-0084-00		11	53
14569	020-0012-09	5330-00-369-3464	11	8
14569	020-0012-11	5330-01-278-9526	11	4
14569	020-0104-00	5330-01-032-3353	11	35
14569	020-0146-00	5330-00-587-6405	11	25
14569	020-0159-00	5330-00-359-6272	11	52
14569	020-0709-00	5330-01-484-7314	11	28
14569	020-0732-00	5330-01-276-5774	11	31
14569	020-0756-00	5330-01-484-7320	11	40
14569	020-0757-04	5330-01-484-7318	11	41
14569	020-0844-00	5331-01-484-7302	11	22
14569	020-0844-01		11	50
14569	025-0002-35		11	45
14569	025-0088-35		11	46
14569	027-0192-00	5365-01-485-0522	11	11
14569	036-0008-02	4130-01-032-0828	11	36
14569	062-0058-00	5940-00-981-2568	11	19
14569	071-0429-08		11	43
91929	1DM3	5930-01-483-2663	4	24
14569	100-0012-07		11	15
14569	100-0012-26		11	26
14569	100-0013-02	5305-00-981-2570	11	20
14569	100-0013-19	5306-00-981-2573	11	2
14569	100-0013-20		11	32
14569	100-0013-49	5306-00-449-5914	11	6
14569	100-0028-04	5305-00-981-2578	11	42
14569	100-0028-05	4130-00-017-9650	11	49
14569	100-0062-52		11	37
14569	100-0063-02	5305-00-450-1943	11	18
14569	100-0077-18		11	23
14569	100-0180-02		11	16
14569	100-0182-02		11	33
14569	101-0002-12		11	13
14569	101-0006-00		11	9
70510	1010FY	5340-01-471-4306	7	52
14569	102-0010-11		11	14
14569	103-0025-07		11	29
61510	1085A27G02	6685-00-924-9434	9	14
02795	12MBS-4141B-111/ 2 IN	4720-00-116-7493	7	44
94833	120K1492	9905-01-484-7602	14	2
94833	120K1520	9905-01-484-4562	14	3

UNIT AND DIRECT SUPPORT MAINTENANCE

REFRIGERATION UNIT, MECHANICAL, 9K BTU, ELECTRIC  
F9000RE

PART NUMBER INDEX

CAGEC	PART NUMBER	STOCK NUMBER	FIG.	ITEM
92966	120MB	6240-00-939-7859	4	2
94833	12075-10-2000		7	53
94833	12075-10-8938		7	64
94833	12075-5-1625		7	97
94833	12075-9-1875		7	39
94833	12076-3-1000		9	10
94833	12076-5-1250		7	70
94833	12076-5-1813		7	87
94833	12076-6-1000		7	67
34984	123-000-544	5320-01-259-2470	14	1
83330	125-0410-1132-40	6210-00-840-0848	4	3
	3			
83330	125-1132-403	6210-01-456-6895	4	4
83330	125-1191-403	6210-01-098-3886	4	1
19200	12712937-2		3	104
			3	109
97403	13216E6191-1	5940-00-948-9686	3	45
			3	52
			3	56
			3	79
97403	13216E6191-1	5940-00-948-9686	3	83
			3	86
			3	89
			3	93
			3	97
			3	174
			3	177
			3	180
			3	183
			3	186
			3	189
97403	13220E5213-3	5320-00-411-9439	10	59
97403	13225E8562	5640-01-195-6254	BULK	1
59730	142		11	56
94833	148K0164-1	9905-01-483-3661	14	7
94833	148K0164-3	9905-01-483-3664	14	6
94833	148K0164-5	9905-01-483-3658	14	8
94833	149K0051-3		9	9
94833	149K0051-3/3		9	12
94833	149K0055-3		7	92
94833	149K0056		6	16
94833	150K0168-1		13	4
94833	150K0168-3		13	5
94833	150K0168-5		13	2
94833	150K0168-7		13	3
94833	150K0201-1		4	47
94833	150K0201-1/1		4	50

## UNIT AND DIRECT SUPPORT MAINTENANCE

REFRIGERATION UNIT, MECHANICAL, 9K BTU, ELECTRIC  
F9000RE

## PART NUMBER INDEX

CAGEC	PART NUMBER	STOCK NUMBER	FIG.	ITEM
94833	150K0201-1/3		4	49
94833	151K0042-1		3	149
94833	151K0042-1/4		3	152
94833	152K0000-1/15		7	107
94833	152K0000-1/172		7	59
94833	152K0000-1/191		5	4
94833	152K0000-1/192		5	5
94833	152K0000-1/57		7	48
94833	152K0001-1		14	9
94833	152K0007-1	9905-01-484-7603	14	40
94833	152K0009-1		2	2
94833	152K0009-1/54		4	41
94833	152K0010-1	5340-01-483-6492	4	12
94833	152K0011-1		3	195
94833	152K0011-1/2		3	198
94833	152K0011-1/3		3	197
94833	152K0017-1		4	55
94833	152K0018		4	28
94833	152K0021-1		3	3
94833	152K0021-1/1		3	5
94833	152K0021-10 TO 1 3		3	18
94833	152K0021-10/13		3	22
94833	152K0021-14		3	23
94833	152K0021-14/3		3	25
94833	152K0021-15		3	26
94833	152K0021-16		3	27
94833	152K0021-16/3		3	29
94833	152K0021-17		3	30
94833	152K0021-17/3		3	32
94833	152K0021-18		3	33
94833	152K0021-18/3		3	35
94833	152K0021-19 TO 2 2		3	36
94833	152K0021-19/14		3	40
94833	152K0021-2		3	6
94833	152K0021-2/1		3	8
94833	152K0021-23		3	41
94833	152K0021-23/3		3	43
94833	152K0021-24		3	44
94833	152K0021-24/3		3	46
94833	152K0021-25		3	47
94833	152K0021-25/3		3	50
94833	152K0021-26		3	51
94833	152K0021-26/3		3	54
94833	152K0021-27		3	55
94833	152K0021-27/3		3	57

## UNIT AND DIRECT SUPPORT MAINTENANCE

REFRIGERATION UNIT, MECHANICAL, 9K BTU, ELECTRIC  
F9000RE

## PART NUMBER INDEX

CAGEC	PART NUMBER	STOCK NUMBER	FIG.	ITEM
94833	152K0021-28		3	58
94833	152K0021-28/3		3	62
94833	152K0021-29		3	63
94833	152K0021-29/3		3	66
94833	152K0021-3		3	9
94833	152K0021-3/1		3	11
94833	152K0021-30		3	67
94833	152K0021-30/3		3	71
94833	152K0021-31		3	72
94833	152K0021-31/3		3	74
94833	152K0021-32		3	75
94833	152K0021-32/3		3	77
94833	152K0021-33		3	78
94833	152K0021-33/3		3	81
94833	152K0021-34		3	82
94833	152K0021-34/3		3	84
94833	152K0021-35		3	85
94833	152K0021-35/3		3	87
94833	152K0021-36		3	88
94833	152K0021-36/3		3	91
94833	152K0021-37		3	92
94833	152K0021-37/3		3	95
94833	152K0021-38		3	96
94833	152K0021-38/3		3	99
94833	152K0021-39		3	100
94833	152K0021-39/3		3	102
94833	152K0021-4		3	12
94833	152K0021-40		3	103
94833	152K0021-40/3		3	107
94833	152K0021-41		3	108
94833	152K0021-41/3		3	112
94833	152K0021-42		3	113
94833	152K0021-42/3		3	115
94833	152K0021-43		3	116
94833	152K0021-43/3		3	118
94833	152K0021-44		3	119
94833	152K0021-44/3		3	122
94833	152K0021-45		3	123
94833	152K0021-45/3		3	127
94833	152K0021-46		3	128
94833	152K0021-46/3		3	130
94833	152K0021-47		3	131
94833	152K0021-47/3		3	135
94833	152K0021-48		3	136
94833	152K0021-48/3		3	138
94833	152K0021-49		3	139
94833	152K0021-49/1		3	141



## UNIT AND DIRECT SUPPORT MAINTENANCE

REFRIGERATION UNIT, MECHANICAL, 9K BTU, ELECTRIC  
F9000RE

## PART NUMBER INDEX

CAGEC	PART NUMBER	STOCK NUMBER	FIG.	ITEM
94833	152K0021-5		3	13
94833	152K0021-50		3	142
94833	152K0021-50/3		3	145
94833	152K0021-51		3	146
94833	152K0021-51/3		3	148
94833	152K0021-52		3	154
94833	152K0021-52/2		3	156
94833	152K0021-53		3	157
94833	152K0021-53/2		3	159
94833	152K0021-54		3	160
94833	152K0021-55		3	161
94833	152K0021-55/3		3	163
94833	152K0021-56		3	164
94833	152K0021-56/3		3	166
94833	152K0021-57		3	167
94833	152K0021-57/3		3	169
94833	152K0021-58		3	170
94833	152K0021-58/3		3	172
94833	152K0021-59		3	173
94833	152K0021-59/3		3	175
94833	152K0021-6		3	14
94833	152K0021-60		3	176
94833	152K0021-60/3		3	178
94833	152K0021-61		3	179
94833	152K0021-61/3		3	181
94833	152K0021-62		3	182
94833	152K0021-62/3		3	184
94833	152K0021-63		3	185
94833	152K0021-63/3		3	187
94833	152K0021-64		3	188
94833	152K0021-64/3		3	190
94833	152K0021-65		3	191
94833	152K0021-66		3	192
94833	152K0021-66/3		3	194
94833	152K0021-7		3	15
94833	152K0021-8		3	16
94833	152K0021-9		3	17
94833	152K0022	3040-01-483-8105	6	24
94833	152K0023-1		10	3
94833	152K0029-1	5340-01-483-6453	1	11
94833	152K0030-1	5340-01-483-6474	1	10
94833	152K0034-1		10	18
94833	152K0036		4	10
94833	152K0037		4	11
94833	152K0038		12	10
94833	152K0039		10	48
94833	152K0045-1		7	108

UNIT AND DIRECT SUPPORT MAINTENANCE

REFRIGERATION UNIT, MECHANICAL, 9K BTU, ELECTRIC  
F9000RE

PART NUMBER INDEX

CAGEC	PART NUMBER	STOCK NUMBER	FIG.	ITEM
94833	152K0051-1	5340-01-483-6441	14	11
94833	152K0063		6	15
94833	152K0068-1	5340-01-483-6225	1	4
94833	152K0072-1		14	17
94833	152K0073		14	19
			14	27
94833	152K0084-1	5340-01-483-6203	1	3
94833	152K0088-1		14	33
94833	152K0089		14	35
94833	152K0091-1		14	25
94833	152K0097-1		10	57
94833	152K0100		6	10
94833	152K0103-1	4130-01-484-0646	12	3
94833	152K0104-1		12	7
94833	152K0104-3		12	8
94833	152K0105		12	5
94833	152K0111		10	15
94833	152K0113-1		10	17
94833	152K0116		4	27
94833	152K0117		4	26
94833	152K0118-1	5930-01-483-4018	4	9
94833	152K0119-1	5340-01-484-0126	14	28
94833	152K0120-1	5340-01-484-0086	14	20
94833	152K0122-1	5340-01-484-0545	14	36
94833	152K0127-1		12	1
94833	152K0128-1		4	18
94833	152K0129		4	22
94833	152K0130		12	9
94833	152K0131		12	2
94833	152K0133-1		6	11
94833	152K0138-1		7	28
94833	152K0143-1		4	25
94833	152K0146		10	47
94833	152K0155		7	78
94833	152K0156		7	12
94833	152K0157		7	6
94833	152K0158-1		13	10
94833	152K0158-2		13	9
94833	152K0159		13	6
94833	152K0160		13	8
94833	152K0161		13	7
94833	152K0163		10	10
94833	152K0164		10	26
94833	152K0168-1		7	11
94833	152K0171-1		7	29
94833	152K0171-1/1		7	31
94833	152K0172-1		7	79

UNIT AND DIRECT SUPPORT MAINTENANCE

REFRIGERATION UNIT, MECHANICAL, 9K BTU, ELECTRIC  
F9000RE

PART NUMBER INDEX

CAGEC	PART NUMBER	STOCK NUMBER	FIG.	ITEM
94833	152K0172-1/1		7	81
94833	152K0173		7	94
94833	152K0174		7	62
94833	152K0175		7	57
94833	152K0176		7	51
94833	152K0177		7	42
94833	152K0178		7	34
94833	152K0179-1		7	100
94833	152K0179-1/1		7	102
94833	152K0180-1		7	84
94833	152K0180-1/T		7	86
94833	152K0181-1		7	56
94833	152K0182-1		7	103
94833	152K0182-1/T		7	105
94833	152K0189-1	6110-01-484-4674	4	39
94833	152K0190		10	30
94833	152K0191		10	31
94833	152K0192		7	95
94833	152K0193		10	35
94833	152K0194		10	36
94833	152K0195		10	37
94833	152K0196-1		10	38
94833	152K0196-1/2		10	40
94833	152K0197-1		10	41
94833	152K0197-1/2		10	43
94833	152K0198		10	49
94833	152K0205-1		7	13
94833	152K0205-1/T		7	15
89346	165565R1	5940-00-143-4661	3	19
			3	37
14569	2DA3-060E-TFC-800	4130-01-486-2928	11	1
74400	20007	6645-01-477-5316	4	8
	20640L15-496-210			
14859	L45-2.10	5930-01-211-3339	10	28
97765	24591	5330-01-333-8101	7	25
59730	2535	5975-00-539-6912	11	57
97765	27035	4820-01-485-0530	7	16
97765	27036	4820-01-485-0527	7	17
91265	3134	5325-01-088-7468	10	56
59730	3302M	5975-00-152-1144	6	5
97765	3391		7	23
97765	3700	4130-01-394-7836	7	60
81349	39TB2	5940-00-983-6122	4	51
07295	40570	4730-01-092-3835	7	46
00779	42282-2	5940-00-620-9780	3	60
			3	69
			3	124
			3	132

UNIT AND DIRECT SUPPORT MAINTENANCE

REFRIGERATION UNIT, MECHANICAL, 9K BTU, ELECTRIC  
F9000RE

PART NUMBER INDEX

CAGEC	PART NUMBER	STOCK NUMBER	FIG.	ITEM
00779	42565-2	5940-01-091-2560	7	72
00779	480053-3	5970-00-494-8284	7	73
00779	480054-3	5970-00-494-8285	3	20
			3	38
			3	61
			3	70
			3	105
			3	110
			3	125
			3	133
94833	500K1662-2-11.33		14	15
94833	500K1857-1C	6685-00-948-0928	9	15
94833	500K1861-3	6105-01-486-3494	6	6
94833	500K1864-2	4140-01-484-0644	6	18
94833	500K1865-3	4140-01-484-0649	6	23
94833	500K1866	3130-01-485-1737	6	17
94833	500K1904-1	5945-01-485-1175	4	43
94833	500K1914-1	5925-01-486-3185	4	15
94833	500K1915-5	6145-01-484-4081	BULK	3
94833	500K1926-1		4	40
			5	3
			10	13
94833	500K1926-2		1	7
			10	6
94833	500K1926-3		4	36
			10	21
94833	500K1926-4		6	13
			7	3
94833	500K1926-5		7	19
94833	500K1926-6		6	8
			7	22
			10	2
94833	500K1926-8		11	10
94833	500K1927-1		2	5
			4	6
			5	1
			10	12
94833	500K1927-2		4	19
			4	46
			10	8
94833	500K1927-3		7	90
94833	500K1927-4		7	1
94833	500K1927-5		7	18
94833	500K1927-6		6	7
			7	21
94833	500K1927-8		7	58
94833	500K1928-1		4	13

UNIT AND DIRECT SUPPORT MAINTENANCE

REFRIGERATION UNIT, MECHANICAL, 9K BTU, ELECTRIC  
F9000RE

PART NUMBER INDEX

CAGEC	PART NUMBER	STOCK NUMBER	FIG.	ITEM
94833	500K1928-11		4	20
			7	74
94833	500K1928-13		10	9
94833	500K1928-14		10	4
94833	500K1928-19		1	1
			4	34
			7	82
			8	1
			14	41
94833	500K1928-21		7	4
			9	5
			14	12
			14	21
			14	29
			14	44
94833	500K1928-24		7	91
94833	500K1928-3		9	1
94833	500K1928-30		6	12
			7	10
94833	500K1928-33		7	2
94833	500K1928-44		7	26
94833	500K1928-45		6	3
94833	500K1928-46		7	20
94833	500K1928-5		4	7
			10	14
94833	500K1928-59		6	14
94833	500K1928-8		5	2
94833	500K1938-2	4520-01-483-9040	10	16
94833	500K1947	9905-01-484-3216	14	4
94833	500K1948	9905-01-484-7604	14	5
94833	500K1950-1		4	14
			9	2
94833	500K1950-2		1	6
			7	75
			10	5
94833	500K1950-3		1	2
			4	35
			7	5
			8	2
			9	6
			10	20
			14	13
			14	22
			14	30
			14	42
94833	500K1950-5		6	4
94833	500K1950-5		7	27

UNIT AND DIRECT SUPPORT MAINTENANCE

REFRIGERATION UNIT, MECHANICAL, 9K BTU, ELECTRIC  
F9000RE

PART NUMBER INDEX

CAGEC	PART NUMBER	STOCK NUMBER	FIG.	ITEM
94833	500K1950-6		6	25
94833	500K1955	3020-01-485-0468	6	20
94833	500K2093	5340-01-486-2051	14	14
			14	23
			14	31
			14	38
			14	43
14569	503-0346-01		11	24
14569	503-0423-03	4130-01-485-7757	11	39
14569	504-0217-00		11	47
14569	505-0173-09		11	17
14569	505-0360-00		11	34
57958	5054519-9		4	54
57958	5054520-3		4	53
14569	509-0034-10		11	30
14569	510-0068-00		11	3
14569	510-0142-00	4820-00-980-1671	11	54
1DX67	510-0238-01	4820-01-485-1934	11	7
14569	521-0018-00	4130-00-981-2582	11	21
94833	53575-10-8		4	33
94833	53581-8-20		12	4
94833	53581-8-32		12	6
95535	55229	4710-00-424-2694	BULK	13
94833	555K5004-2HN-0721	9320-01-486-5215	BULK	4
81343	6010166(NS4)	4730-00-189-2739	7	69
00779	61045-2	5940-01-063-9908	4	42
02413	800E2730	4710-00-277-5527	BULK	12
70485	806	5340-00-598-7840	14	16
			14	24
			14	32
19207	8689211	4710-00-277-4508	BULK	14
0A400	980097 3CZ060 2C	4130-01-484-0761	7	112
97765	983-430	5340-01-485-0689	7	24
			7	61
0SN36	983922 4CZ070 6A		10	51
14569	998-0002-02	6680-01-125-4514	11	48

By Order of the Secretary of the Army:

Official:



JOEL B. HUDSON

*Administrative Assistant to the  
Secretary of the Army*

0125703

ERIC K. SHINSEKI  
*General, United States Army  
Chief of Staff*

DISTRIBUTION:

To be distributed in accordance with Initial Distribution Number (IDN 256694), requirements for TM 9-4110-258-23P.

THIS PAGE INTENTIONALLY LEFT BLANK



## ***These are the instructions for sending an electronic 2028***

The following format must be used if submitting an electronic 2028. The subject line must be exactly the same and all fields must be included; however only the following fields are mandatory: 1, 3, 4, 5, 6, 7, 8, 9, 10, 13, 15, 16, 17, and 27.

From: • Whomever" <whomever@avma27.army.mil>  
To: amssb-rim-e@natick.army.mil

Subject: DA Form 2028

1. From: Joe Smith
2. Unit: home
3. Address: 4300 Park
4. City: Hometown
5. St: MO
6. Zip: 77777
7. Date Sent: 19-OCT-93
8. Pub no: 55-2840-229-23
9. Pub Title: TM
10. Publication Date: 04-JUL-85
11. Change Number: 7
12. Submitter Rank: MSG
13. Submitter FName: Joe
14. Submitter MName: T
15. Submitter LName: Smith
16. Submitter Phone: 123-123-1234
17. Problem: 1
18. Page: 2
19. Paragraph: 3
20. Line: 4
21. NSN: 5
22. Reference: 6
23. Figure: 7
24. Table: 8
25. Item: 9
26. Total: 123
27. Text:

This is the text for the problem below line 27.

THIS PAGE INTENTIONALLY LEFT BLANK



THEN . . . JOT DOWN THE DOPE ABOUT IT ON THIS FORM, CAREFULLY TEAR IT OUT, FOLD IT AND DROP IT IN THE MAIL!

# SOMETHING WRONG WITH THIS PUBLICATION?

FROM: (PRINT YOUR UNIT'S COMPLETE ADDRESS)

*PFC John DOE  
CO A 3rd Engineer Bn  
Ft. Leonardwood, MO 63108*

DATE SENT

*22 August 1992*

PUBLICATION NUMBER

TM 1-1520-250-10

PUBLICATION DATE

15 June 1992

PUBLICATION TITLE

Operator's manual MH60K Helicopter

BE EXACT PIN-POINT WHERE IT IS

IN THIS SPACE, TELL WHAT IS WRONG AND WHAT SHOULD BE DONE ABOUT IT:

PAGE NO	PARA-GRAPH	FIGURE NO	TABLE NO
6	2-1 a		
B1		4-3	

*In line 6 of paragraph 2-1a the manual states the engine has 6 cylinders. The engine on my set only has 4 cylinders. Change the manual to show 4 cylinders.*

*Callout 16 on figure 4-3 is pointed at a bolt. In key to figure 4-3, item 16 is called a shim. Please correct one or the other*

PRINTED NAME, GRADE OR TITLE, AND TELEPHONE NUMBER

*JOHN DOE, PFC (268) 317-7111*

SIGN HERE

*JOHN DOE John Doe*

FILL IN YOUR  
UNITS ADDRESS



FOLD BACK

DEPARTMENT OF THE ARMY

\_\_\_\_\_

\_\_\_\_\_

OFFICIAL BUSINESS

COMMANDER  
U.S. ARMY SOLDIER AND BIOLOGICAL CHEMICAL COMMAND  
ATTN: AMSSB-RIM-E  
KANSAS STREET  
NATICK, MA 01760-5000

TEAR ALONG PERFORATED LINE



FILL IN YOUR  
UNITS ADDRESS



FOLD BACK

DEPARTMENT OF THE ARMY

\_\_\_\_\_

\_\_\_\_\_

OFFICIAL BUSINESS

COMMANDER  
U.S. ARMY SOLDIER AND BIOLOGICAL CHEMICAL COMMAND  
ATTN: AMSSB-RIM-E  
KANSAS STREET  
NATICK, MA 01760-5000

TEAR ALONG PERFORATED LINE

## The Metric System and Equivalents

### *Linear Measure*

1 centimeter = 10 millimeters = .39 inch  
 1 decimeter = 10 centimeters = 3.94 inches  
 1 meter = 10 decimeters = 39.37 inches  
 1 dekameter = 10 meters = 32.8 feet  
 1 hectometer = 10 dekameters = 328.08 feet  
 1 kilometer = 10 hectometers = 3,280.8 feet

### *Weights*

1 centigram = 10 milligrams = .15 grain  
 1 decigram = 10 centigrams = 1.54 grains  
 1 gram = 10 decigrams = .035 ounce  
 1 dekagram = 10 grams = .35 ounce  
 1 hectogram = 10 dekagrams = 3.52 ounces  
 1 kilogram = 10 hectograms = 2.2 pounds  
 1 quintal = 100 kilograms = 220.46 pounds  
 1 metric ton = 10 quintals = 1.1 short tons

### *Liquid Measure*

1 centiliter = 10 milliliters = .34 fl. ounce  
 1 deciliter = 10 centiliters = 3.38 fl. ounces  
 1 liter = 10 deciliters = 33.81 fl. ounces  
 1 dekaliter = 10 liters = 2.64 gallons  
 1 hectoliter = 10 dekaliters = 26.42 gallons  
 1 kiloliter = 10 hectoliters = 264.18 gallons

### *Square Measure*

1 sq. centimeter = 100 sq. millimeters = .155 sq. inch  
 1 sq. decimeter = 100 sq. centimeters = 15.5 sq. inches  
 1 sq. meter (centare) = 100 sq. decimeters = 10.76 sq. feet  
 1 sq. dekameter (are) = 100 sq. meters = 1,076.4 sq. feet  
 1 sq. hectometer (hectare) = 100 sq. dekameters = 2.47 acres  
 1 sq. kilometer = 100 sq. hectometers = .386 sq. mile

### *Cubic Measure*

1 cu. centimeter = 1000 cu. millimeters = .06 cu. inch  
 1 cu. decimeter = 1000 cu. centimeters = 61.02 cu. inches  
 1 cu. meter = 1000 cu. decimeters = 35.31 feet

## Approximate Conversion Factors

<i>To change</i>	<i>To</i>	<i>Multiply by</i>	<i>To change</i>	<i>To</i>	<i>Multiply by</i>
inches	centimeters	2.540	ounce-inches	newton-meters	.007062
feet	meters	.305	centimeters	inches	.394
yards	meters	.914	meters	feet	3.280
miles	kilometers	1.609	meters	yards	1.094
square inches	square centimeters	6.451	kilometers	miles	.621
square feet	square meters	.093	square centimeters	square inches	.155
square yards	square meters	.836	square meters	square feet	10.764
square miles	square kilometers	2.590	square meters	square yards	1.196
acres	square hectometers	.405	square kilometers	square miles	.386
cubic feet	cubic meters	.028	square hectometers	acres	2.471
cubic yards	cubic meters	.765	cubic meters	cubic feet	35.315
fluid ounces	milliliters	29.573	cubic meters	cubic yards	1.308
pints	liters	.473	milliliters	fluid ounces	.034
quarts	liters	.946	liters	pints	2.113
gallons	liters	3.785	liters	quarts	1.057
ounces	grams	28.349	liters	gallons	.264
pounds	kilograms	.454	grams	ounces	.035
short tons	metric tons	.907	kilograms	pounds	2.205
pound-feet	newton-meters	1.356	metric tons	short tons	1.102
pound-inches	newton-meters	.11296			

## Temperature (Exact)

_F	Fahrenheit temperature	5/9 (after subtracting 32)	Celsius temperature	_C
----	---------------------------	-------------------------------	------------------------	----

**PIN: 079278-000**